

Allgemeine Informationen

Katalog-Nr.: 22988-1-AP	GenBank-Zugangsnummer: BC121020	Reinigungsmethode: Antigen-affinitätsgereinigt
Größe: 150ul, Konzentration: 700 µg/ml von Nanodrop und 367 µg/ml durch die Bradford-Methode mit BSA als Standard;	GeneID (NCBI): 54901	Empfohlene Verdünnungen: WB 1:1000-1:4000 IHC 1:50-1:500 IF 1:20-1:200
Wirt: Kaninchen	Vollständiger Name: CDK5 regulatory subunit associated protein 1-like 1	
Isotyp: IgG	Berechnete Masse: 579 aa, 65 kDa	
Immunogen Katalognummer: AG19060	Beobachtete Masse: 60-65 kDa	

Anwendungen

Geprüfte Anwendungen: IF, IHC, WB, ELISA	Positivkontrollen: WB : Mauslungengewebe, HepG2-Zellen, HT-1080.Zellen, Jurkat-Zellen IHC : humanes Ösophagusgewebe, IF : HepG2-Zellen,
In Publikationen genannte Anwendungen: WB	
Getestete Reaktivität: Human, Maus	
Zitierte Arten: Human	
Hinweis-IHC: Antigenmaskierung mit TE-Puffer pH 9,0 empfohlen. (*) Wahlweise kann die Antigenmaskierung auch mit Citratpuffer pH 6,0 erfolgen.	

Hintergrundinformationen

Cell cycle progression is controlled, in part, by a family of cyclin dependent kinases (Cdks) that work to phosphorylate key substrates involved in each phase of cell cycle progression. Cdks are the catalytic subunits of serine/threonine protein kinases, a large family of proteins that act as regulators of the eukaryotic cell cycle. CDKAL1 (Cdk5 regulatory subunit associated protein 1-like 1) is a 579 amino acid single-pass membrane protein that contains one TRAM domain and is similar to Cdk5 regulatory subunit associated proteins (CDK5RAPs). Expressed in pancreas, brain and skeletal muscle, CDKAL1 uses iron as a cofactor and is involved in glucose-stimulated INS secretion. Defects in the gene encoding CDKAL1 impair INS secretion and are associated with the development of type 2 diabetes. Multiple isoforms of CDKAL1 exist due to alternative splicing events. This antibody recognizes the 65kd isoform of CDKAL1.

Bemerkenswerte Veröffentlichungen

Verfasser	Pubmed ID	Journal	Anwendung
Rongsheng Huang	36786012	Adv Sci (Weinh)	WB

Lagerung

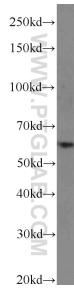
Lagerungsbedingungen:
Bei -20°C lagern. Nach dem Versand ein Jahr lang stabil
Lagerungspuffer:
PBS mit 0.02% Natriumazid und 50% Glycerin pH 7.3.
Aliquotieren ist nicht notwendig bei -20°C Lagerung

*** 20ul-Größen enthalten 0.1% BSA

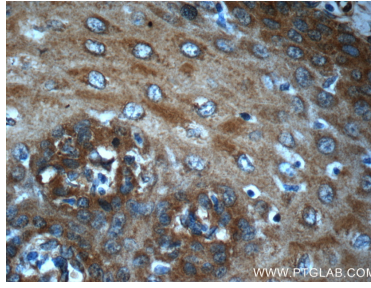
For technical support and original validation data for this product please contact:
T: 1 (888) 4PTGLAB (1-888-478-4522) (toll free in USA), or 1(312) 455-8498 (outside USA)
E: proteintech@ptglab.com
W: ptglab.com

This product is exclusively available under Proteintech Group brand and is not available to purchase from any other manufacturer.

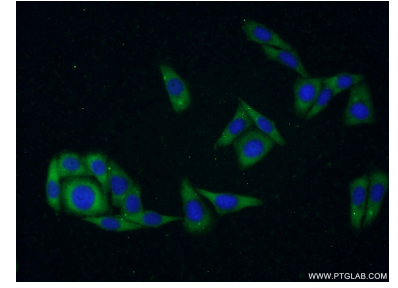
Ausgewählte Validierungsdaten



mouse lung tissue were subjected to SDS PAGE followed by western blot with 22988-1-AP (CDKAL1 antibody) at dilution of 1:2000 incubated at room temperature for 1.5 hours.



Immunohistochemical analysis of paraffin-embedded human oesophagus slide using 22988-1-AP (CDKAL1 Antibody) at dilution of 1:50.



Immunofluorescent analysis of HepG2 cells using 22988-1-AP (CDKAL1 antibody) at dilution of 1:50 and Alexa Fluor 488-conjugated AffiniPure Goat Anti-Rabbit IgG(H+L).