

Nur für Forschungszwecke

MMP12 Polyklonaler Antikörper

Katalog-Nr.: 22989-1-AP

23 Publikationen



Allgemeine Informationen

| | | |
|--|---|--|
| Katalog-Nr.: 22989-1-AP | GenBank-Zugangsnummer: BC112301 | Reinigungsmethode: Antigen-Affinitätsreinigung |
| Größe: 150ul, Konzentration: 520 µg/ml von Nanodrop; | GeneID (NCBI): 4321 | Empfohlene Verdünnungen: WB 1:500-1:3000 IHC 1:20-1:200 |
| Wirt: Kaninchen | Vollständiger Name: matrix metalloproteinase 12 (macrophage elastase) | |
| Isotyp: IgG | Berechnete Masse: 470 aa, 54 kDa | |
| Immunogen Katalognummer: AG19068 | Beobachtete Masse: 54 kDa, 45 kDa | |

Anwendungen

Geprüfte Anwendungen:

IHC, WB, ELISA

In Publikationen genannte Anwendungen:

IF, IHC, WB

Getestete Reaktivität:

Human, Maus, Ratte

Zitierte Arten:

Hamster, Human, Kaninchen, Maus

Hinweis-IHC: Antigenmaskierung mit TE-Puffer pH 9,0 empfohlen. (*) Wahlweise kann die Antigenmaskierung auch mit Citratpuffer pH 6,0 erfolgen.

Positivkontrollen:

WB: Maushirngewebe, Rattenhirngewebe

IHC: humanes Lungenkarzinomgewebe, humanes Lungengewebe, humanes Mammakarzinomgewebe

Hintergrundinformationen

MMP12(Matrix metalloproteinase-12) is a 54 kDa proenzyme that is processed into a 45 kDa and then a 22 kDa active form(15723202). MMP9 and MMP12 promote intimal thickening by independent cleavage of N-cadherin, which elevates vascular smooth muscle cell proliferation via beta-catenin signalling. Its overexpression in myeloid lineage cells plays a key role in modulating myelopoiesis, immune suppression, and lung tumorigenesis(PMID: 21378275).

Bemerkenswerte Veröffentlichungen

| Verfasser | Pubmed ID | Journal | Anwendung |
|-----------------|-----------|---------------------|-----------|
| Zhen-Huang Chen | 32918999 | Mol Cell Neurosci | IHC |
| Ruijuan Guan | 31704583 | Redox Biol | WB |
| Jian Chen | 34722509 | Front Cell Dev Biol | IF |

Lagerung

Lagerungsbedingungen:

Bei -20°C lagern. Nach dem Versand ein Jahr lang stabil

Lagerungspuffer:

PBS mit 0.02% Natriumazid und 50% Glycerin pH 7.3.

Aliquotieren ist nicht notwendig bei -20°C Lagerung

*** 20ul-Größen enthalten 0.1% BSA

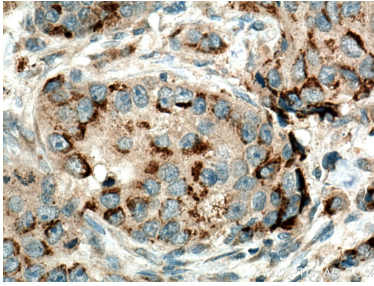
For technical support and original validation data for this product please contact:

T: 1 (888) 4PTGLAB (1-888-478-4522) (toll free in USA), or 1(312) 455-8498 (outside USA)

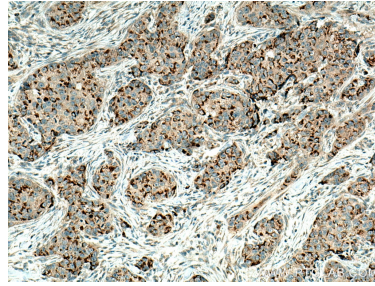
E: proteintech@ptglab.com
W: ptglab.com

This product is exclusively available under Proteintech Group brand and is not available to purchase from any other manufacturer.

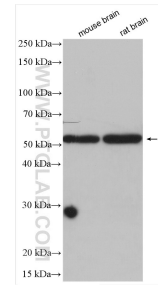
Ausgewählte Validierungsdaten



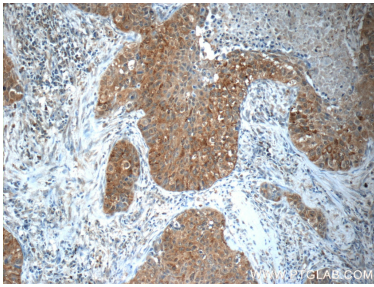
Immunohistochemical analysis of paraffin-embedded human breast cancer tissue slide using 22989-1-AP (MMP12 antibody) at dilution of 1:200 (under 40x lens). Heat mediated antigen retrieval with Tris-EDTA buffer (pH 9.0).



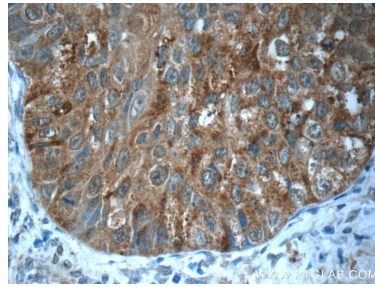
Immunohistochemical analysis of paraffin-embedded human breast cancer tissue slide using 22989-1-AP (MMP12 antibody) at dilution of 1:200 (under 10x lens). Heat mediated antigen retrieval with Tris-EDTA buffer (pH 9.0).



Various lysates were subjected to SDS PAGE followed by western blot with 22989-1-AP (MMP12 antibody) at dilution of 1:1500 incubated at room temperature for 1.5 hours.



Immunohistochemical analysis of paraffin-embedded human lung cancer tissue slide using 22989-1-AP (MMP12 Antibody) at dilution of 1:50 (under 10x lens).



Immunohistochemical analysis of paraffin-embedded human lung cancer tissue slide using 22989-1-AP (MMP12 Antibody) at dilution of 1:50 (under 40x lens).