

Nur für Forschungszwecke

# SCP2 Polyklonaler Antikörper

Katalog-Nr.: 23006-1-AP

Vorgestelltes Produkt

5 Publikationen



## Allgemeine Informationen

### Katalog-Nr.:

23006-1-AP

### Größe:

150ul, Konzentration: 650 µg/ml von Nanodrop;

### Wirt:

Kaninchen

### Isotyp:

IgG

### Immunogen Katalognummer:

AG19215

### GenBank-Zugangsnummer:

BC005911

### GeneID (NCBI):

6342

### Vollständiger Name:

sterol carrier protein 2

### Berechnete Masse:

547 aa, 59 kDa

### Beobachtete Masse:

13-15 kDa

### Reinigungsmethode:

Antigen-Affinitätsreinigung

### Empfohlene Verdünnungen:

WB 1:1000-1:4000

IP 0.5-4.0 µg für IP und 1:500-1:1000 für WB

IF 1:20-1:200

## Anwendungen

### Geprüfte Anwendungen:

IF, IP, WB, ELISA

### In Publikationen genannte Anwendungen:

IF, WB

### Getestete Reaktivität:

Human, Maus

### Zitierte Arten:

Human, Maus

### Positivkontrollen:

WB: HEK-293T-Zellen, HepG2-Zellen, K-562-Zellen, NIH/3T3-Zellen

IP: HepG2-Zellen,

IF: HepG2-Zellen,

## Hintergrundinformationen

SCP2 (Sterol carrier protein-2), also called nonspecific lipid-transfer protein, is thought to play a major role in intracellular lipid transport and metabolism. Mutations of SCP2 have been associated with diseases involving abnormalities in lipid trafficking, such as Zellweger syndrome. The alternative splicing generates 58 kDa SCPx and 13-15 kDa SCP2 proteins, both of which contain a C-terminal SCP2 domain. In addition to the SCP2 domain, SCPx also contains an amino-terminal thiolase domain. The proteolytic cleavage of SCPx occurred when it was imported into peroxisomes, giving rise to a 44-46 kDa thiolase and a 13-15 kDa SCP2. 23006-1-AP antibody recognizes the 13-15 kDa SCP2 protein.

## Bemerkenswerte Veröffentlichungen

Verfasser	Pubmed ID	Journal	Anwendung
Michael Landowski	36599953	Commun Biol	WB
Shotaro Wani	26920047	J Biochem	WB
Nancy C Li	26901662	PLoS One	IF

## Lagerung

### Lagerungsbedingungen:

Bei -20°C lagern. Nach dem Versand ein Jahr lang stabil

### Lagerungspuffer:

PBS mit 0.02% Natriumazid und 50% Glycerin pH 7.3.

Aliquotieren ist nicht notwendig bei -20°C Lagerung

\*\*\* 20ul-Größen enthalten 0.1% BSA

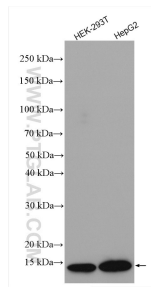
For technical support and original validation data for this product please contact:

T: 1 (888) 4PTGLAB (1-888-478-4522) (toll free in USA), or 1(312) 455-8498 (outside USA)

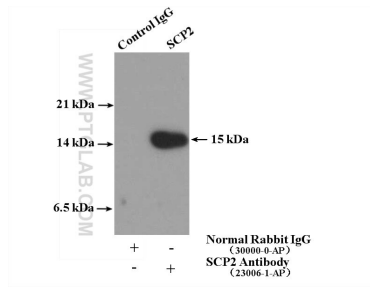
E: proteintech@ptglab.com  
W: ptglab.com

This product is exclusively available under Proteintech Group brand and is not available to purchase from any other manufacturer.

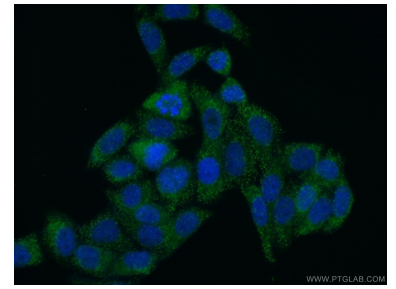
## Ausgewählte Validierungsdaten



Various lysates were subjected to SDS PAGE followed by western blot with 23006-1-AP (SCP2 antibody) at dilution of 1:2000 incubated at room temperature for 1.5 hours.



IP Result of anti-SCP2 (IP:23006-1-AP, 4 $\mu$ g; Detection:23006-1-AP 1:500) with HepG2 cells lysate 3600 $\mu$ g.



Immunofluorescent analysis of (10% Formaldehyde) fixed HepG2 cells using 23006-1-AP (SCP2 antibody) at dilution of 1:50 and Alexa Fluor 488-conjugated AffiniPure Goat Anti-Rabbit IgG(H+L).