

Nur für Forschungszwecke

# smooth muscle actin Polyklonaler Antikörper



Katalog-Nr.: 23081-1-AP

26 Publikationen

## Allgemeine Informationen

Katalog-Nr.:  
23081-1-AP

Größe:  
150ul, Konzentration: 300 µg/ml von  
Nanodrop;

Wirt:  
Kaninchen

Isotyp:  
IgG

Immunogen Katalognummer:  
AG19481

GenBank-Zugangsnummer:  
BC017554

GeneID (NCBI):  
59

Vollständiger Name:  
actin, alpha 2, smooth muscle, aorta

Berechnete Masse:  
377 aa, 42 kDa

Beobachtete Masse:  
42 kDa

Reinigungsmethode:

Antigen-Affinitätsreinigung

Empfohlene Verdünnungen:

WB 1:1000-1:4000  
IP 0.5-4.0 µg für IP und 1:500-1:2000  
für WB  
IHC 1:200-1:1000

## Anwendungen

Geprüfte Anwendungen:

IHC, IP, WB, ELISA

In Publikationen genannte Anwendungen:

IF, IHC, WB

Getestete Reaktivität:

Human, Maus, Ratte

Zitierte Arten:

Human, Maus, Ratte

**Hinweis-IHC: Antigendemaskierung mit TE-Puffer pH 9,0 empfohlen. (\*) Wahlweise kann die Antigendemaskierung auch mit Citratpuffer pH 6,0 erfolgen.**

Positivkontrollen:

WB: Mausherzgewebe, braunes Mausfettgewebe, Mauslebergewebe, Mausnierengewebe, Maus-Skelettmuskelgewebe, Rattenherzgewebe

IP: Mausherzgewebe,

IHC: humanes Herzgewebe, humanes Dünndarmgewebe, humanes Kolongewebe, humanes Lebergewebe, humanes Leberkarzinomgewebe, humanes Skelettmuskelgewebe, humanes Uterusmyomgewebe, Maus-Skelettmuskelgewebe, Stromatumorgewebe

## Hintergrundinformationen

ACTA2 (also known as  $\alpha$ -smooth muscle actin or  $\alpha$ -SMA) belongs to the actin family. Actins are highly conserved proteins that are involved in various types of cell motility and are ubiquitously expressed in all eukaryotic cells. ACTA2 is primarily expressed in vascular smooth muscle and anti-ACTA2 is commonly used to marker smooth muscle cells. This antibody is specific to the ACTA2. It selectively stains the vascular smooth muscle but not cardiac or skeletal muscle.

## Bemerkenswerte Veröffentlichungen

Verfasser	Pubmed ID	Journal	Anwendung
Jan Krivanek	32968047	Nat Commun	IF
Yong He	25201080	Biochim Biophys Acta	WB
Jing Guo	28902355	Int J Oncol	IHC

## Lagerung

Lagerungsbedingungen:

Bei -20°C lagern. Nach dem Versand ein Jahr lang stabil

Lagerungspuffer:

PBS mit 0.02% Natriumazid und 50% Glycerin pH 7.3.

Aliquotieren ist nicht notwendig bei -20°C Lagerung

\*\*\* 20ul-Größen enthalten 0.1% BSA

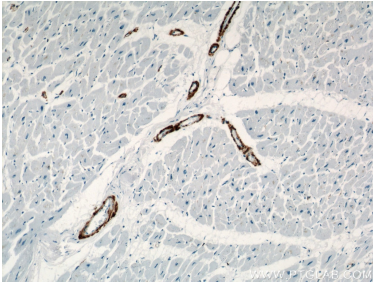
For technical support and original validation data for this product please contact:

T: 1 (888) 4PTGLAB (1-888-478-4522) (toll free in USA), or 1(312) 455-8498 (outside USA)

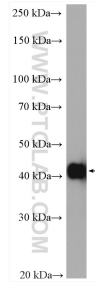
E: proteintech@ptglab.com  
W: ptglab.com

This product is exclusively available under Proteintech Group brand and is not available to purchase from any other manufacturer.

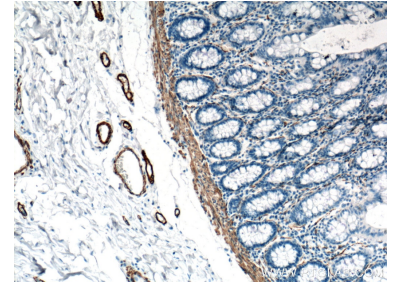
## Ausgewählte Validierungsdaten



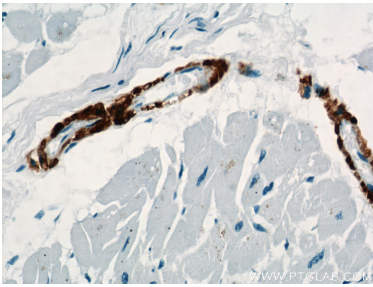
Immunohistochemical analysis of paraffin-embedded human heart using 23081-1-AP (ACTA2/smooth muscle actin antibody) at dilution of 1:500 (under 10x lens).



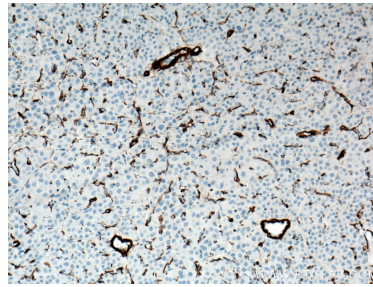
mouse heart tissue were subjected to SDS PAGE followed by western blot with 23081-1-AP (ACTA2/smooth muscle actin antibody) at dilution of 1:2000 incubated at room temperature for 1.5 hours.



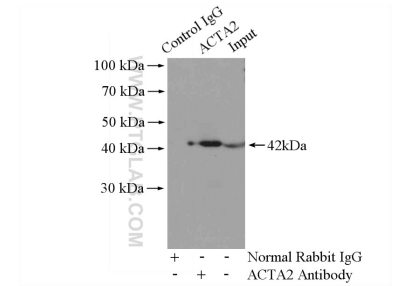
Immunohistochemical analysis of paraffin-embedded human colon tissue slide using 23081-1-AP (ACTA2/smooth muscle actin antibody) at dilution of 1:6400 (under 10x lens). Heat mediated antigen retrieval with Tris-EDTA buffer (pH 9.0).



Immunohistochemical analysis of paraffin-embedded human heart using 23081-1-AP (ACTA2/smooth muscle actin antibody) at dilution of 1:500 (under 40x lens).



Immunohistochemical analysis of paraffin-embedded human liver cancer tissue slide using 23081-1-AP (ACTA2/smooth muscle actin antibody) at dilution of 1:3200 (under 10x lens). Heat mediated antigen retrieval with Tris-EDTA buffer (pH 9.0).



IP Result of anti- $\alpha$ -SMA specific (IP:23081-1-AP, 4ug; Detection:23081-1-AP 1:1000) with mouse heart tissue lysate 3200ug.