

Nur für Forschungszwecke

Claspin Polyklonaler Antikörper

Katalog-Nr.: 23206-1-AP

2 Publikationen



Allgemeine Informationen

Katalog-Nr.:
23206-1-AP

Größe:
150ul, Konzentration: 500 µg/ml von
Nanodrop und 293 µg/ml durch die
Bradford-Methode mit BSA als
Standard;

Wirt:
Kaninchen

Isotyp:
IgG

Immunogen Katalognummer:
AG19637

GenBank-Zugangsnummer:
BC137279

GeneID (NCBI):
63967

Vollständiger Name:
claspin homolog (Xenopus laevis)

Berechnete Masse:
1339 aa, 151 kDa

Beobachtete Masse:
240 kDa

Reinigungsmethode:

Antigen-Affinitätsreinigung

Empfohlene Verdünnungen:

WB 1:200-1:1000
IP 0.5-4.0 µg für IP und 1:500-1:2000
für WB
IF 1:20-1:200

Anwendungen

Geprüfte Anwendungen:

IF, IP, WB, ELISA

In Publikationen genannte Anwendungen:

WB

Getestete Reaktivität:

Human

Zitierte Arten:

Human

Positivkontrollen:

WB: HEK-293-Zellen,

IP: HEK-293-Zellen,

IF: HepG2-Zellen, HeLa-Zellen

Hintergrundinformationen

CLSPN, also named as Claspin, is a 1339 amino acid protein, which belongs to the claspin family. CLSPN localizes in the nucleus and is highly expressed at S/G2 phases of the cell cycle. CLSPN is required for checkpoint mediated cell cycle arrest in response to inhibition of DNA replication or to DNA damage induced by both ionizing and UV irradiation. CLSPN plays a potentially critical role in replication checkpoint control in cells and mediating phosphorylation and activation of checkpoint protein kinases. The calculated molecular weight of CLSPN is 151 kDa, but the modified protein is about 220-240 kDa.

Bemerkenswerte Veröffentlichungen

Verfasser	Pubmed ID	Journal	Anwendung
Chao Wang	28350092	Int J Oncol	WB, IHC
Uma Thanigai Arasu	31820036	Cell Mol Life Sci	WB, IHC

Lagerung

Lagerungsbedingungen:

Bei -20°C lagern. Nach dem Versand ein Jahr lang stabil

Lagerungspuffer:

PBS mit 0.02% Natriumazid und 50% Glycerin pH 7.3.

Aliquotieren ist nicht notwendig bei -20°C Lagerung

*** 20ul-Größen enthalten 0.1% BSA

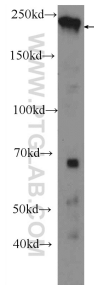
For technical support and original validation data for this product please contact:

T: 1 (888) 4PTGLAB (1-888-478-4522) (toll free
in USA), or 1(312) 455-8498 (outside USA)

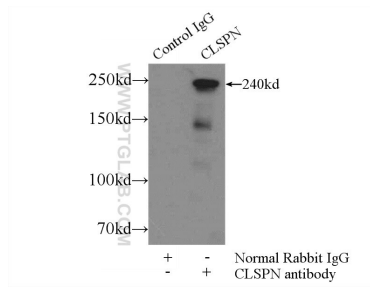
E: proteintech@ptglab.com
W: ptglab.com

This product is exclusively available under Proteintech Group brand and is not available to purchase from any other manufacturer.

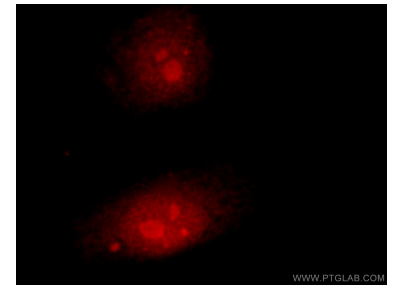
Ausgewählte Validierungsdaten



HEK-293 cells were subjected to SDS PAGE followed by western blot with 23206-1-AP (Claspin antibody) at dilution of 1:300 incubated at room temperature for 1.5 hours.



IP Result of anti-Claspin (IP:23206-1-AP, 5ug; Detection:23206-1-AP 1:1000) with HEK-293 cells lysate 2400ug.



Immunofluorescent analysis of HepG2 cells using 23206-1-AP (Claspin antibody) at dilution of 1:50 and Rhodamine-Goat anti-Rabbit IgG.