

Nur für Forschungszwecke

WT1 Polyklonaler Antikörper

Katalog-Nr.: 23235-1-AP



Allgemeine Informationen

Katalog-Nr.:

23235-1-AP

Größe:

150ul

Wirt:

Kaninchen

Isotyp:

IgG

Immunogen Katalognummer:

AG19541

GenBank-Zugangsnummer:

BC032861

GeneID (NCBI):

7490

Vollständiger Name:

Wilms tumor 1

Berechnete Masse:

449 aa, 49 kDa, 57 kDa

Reinigungsmethode:

Antigen-Affinitätsreinigung

Empfohlene Verdünnungen:

WB 1:200-1:1000

Anwendungen

Geprüfte Anwendungen:

WB, ELISA

Getestete Reaktivität:

Human

Positivkontrollen:

WB: Mausnierengewebe,

Hintergrundinformationen

The WT1 gene encodes a zinc finger DNA-binding protein that acts as a transcriptional activator or repressor depending on the cellular or chromosomal context, and it is required for normal formation of the genitourinary system and mesothelial tissues. WT1 inhibits apoptosis through p53 and Bcl-2 and also inhibits the differentiation of leukemic cells. Function of WT1 may be isoform-specific: isoforms lacking the KTS motif may act as transcription factors. Isoforms containing the KTS motif may bind mRNA and play a role in mRNA metabolism or splicing. Isoform 1 has lower affinity for DNA, and can bind RNA.

Lagerung

Lagerungsbedingungen:

Bei -20°C lagern. Nach dem Versand ein Jahr lang stabil

Lagerungspuffer:

PBS mit 0.02% Natriumazid und 50% Glycerin pH 7.3.

Aliquotieren ist nicht notwendig bei -20°C Lagerung

*** 20ul-Größen enthalten 0.1% BSA

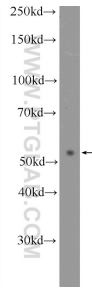
For technical support and original validation data for this product please contact:

T: 1 (888) 4PTGLAB (1-888-478-4522) (toll free in USA), or 1(312) 455-8498 (outside USA)

E: proteintech@ptglab.com
W: ptglab.com

This product is exclusively available under Proteintech Group brand and is not available to purchase from any other manufacturer.

Ausgewählte Validierungsdaten



mouse kidney tissue were subjected to SDS PAGE followed by western blot with 23235-1-AP (WT1 Antibody) at dilution of 1:300 incubated at room temperature for 1.5 hours.