

Nur für Forschungszwecke

# TBX18 Polyklonaler Antikörper

Katalog-Nr.: 23237-1-AP

2 Publikationen



## Allgemeine Informationen

<b>Katalog-Nr.:</b> 23237-1-AP	<b>GenBank-Zugangsnummer:</b> BC157841	<b>Reinigungsmethode:</b> Antigen-affinitätsgereinigt
<b>Größe:</b> 150ul, Konzentration: 600 µg/ml von Nanodrop und 353 µg/ml durch die Bradford-Methode mit BSA als Standard;	<b>GeneID (NCBI):</b> 9096	<b>Empfohlene Verdünnungen:</b> WB 1:500-1:2000 IHC 1:20-1:200
<b>Wirt:</b> Kaninchen	<b>Vollständiger Name:</b> T-box 18	
<b>Isotyp:</b> IgG	<b>Berechnete Masse:</b> 607 aa, 65 kDa	
<b>Immunogen Katalognummer:</b> AG19258	<b>Beobachtete Masse:</b> 65-70 kDa	

## Anwendungen

<b>Geprüfte Anwendungen:</b> IHC, WB, ELISA	<b>Positivkontrollen:</b> WB: HeLa-Zellen, HEK-293-Zellen, humanes Plazenta-Gewebe, Mausnierengewebe, Rattennierengewebe IHC: humanes Nierengewebe, humanes Mammakarzinomgewebe
<b>In Publikationen genannte Anwendungen:</b> IF, WB	
<b>Getestete Reaktivität:</b> Human, Maus, Ratte	
<b>Zitierte Arten:</b> Human, Ratte	
<b>Hinweis-IHC: Antigenmaskierung mit TE-Puffer pH 9,0 empfohlen. (*) Wahlweise kann die Antigenmaskierung auch mit Citratpuffer pH 6,0 erfolgen.</b>	

## Hintergrundinformationen

The T-box (Tbx) motif is present in a family of genes whose structural features and expression patterns support their involvement in developmental gene regulation. The Tbx gene family are largely conserved throughout metazoan evolution, and these genes code for putative transcription factors that share a uniquely defining DNA-binding domain. Tbx genes are a family of developmental regulators with more than 20 members recently identified in invertebrates and vertebrates. Mutations in Tbx genes are associated with the onset of several human diseases. Our understanding of functional mechanisms of Tbx products has come mainly from the prototypical T/Brachyury, which is a transcription activator. The Tbx genes constitute a family of transcriptional regulatory genes that are implicated in a variety of developmental processes ranging from the formation of germ layers to the organizational patterning of the central nervous system. This antibody specifically reacts with the 65kd TBX18 protein.

## Bemerkenswerte Veröffentlichungen

Verfasser	Pubmed ID	Journal	Anwendung
Xiuya Li	34488017	EBioMedicine	IF
Pei Xu	36484369	Mol Med Rep	WB

## Lagerung

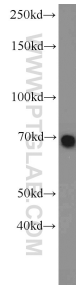
**Lagerungsbedingungen:**  
Bei -20°C lagern. Nach dem Versand ein Jahr lang stabil  
**Lagerungspuffer:**  
PBS mit 0.02% Natriumazid und 50% Glycerin pH 7.3.  
Aliquotieren ist nicht notwendig bei -20°C Lagerung

\*\*\* 20ul-Größen enthalten 0.1% BSA

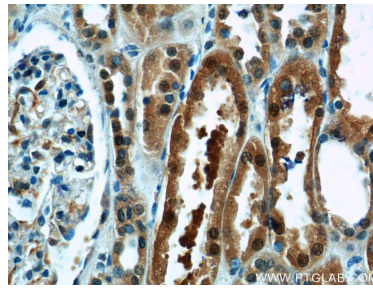
For technical support and original validation data for this product please contact:  
T: 1 (888) 4PTGLAB (1-888-478-4522) (toll free in USA), or 1(312) 455-8498 (outside USA)  
E: proteintech@ptglab.com  
W: ptglab.com

This product is exclusively available under Proteintech Group brand and is not available to purchase from any other manufacturer.

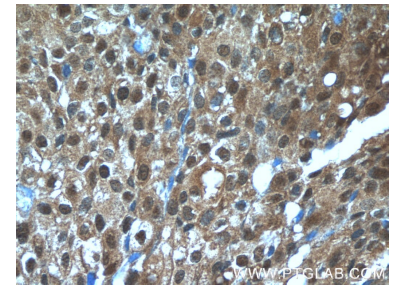
## Ausgewählte Validierungsdaten



HeLa cells were subjected to SDS PAGE followed by western blot with 23237-1-AP (TBX18 antibody) at dilution of 1:1000 incubated at room temperature for 1.5 hours.



Immunohistochemical analysis of paraffin-embedded human kidney tissue slide using 23237-1-AP (TBX18 Antibody) at dilution of 1:50 (under 40x lens).



Immunohistochemical analysis of paraffin-embedded human breast cancer tissue slide using 23237-1-AP (TBX18 Antibody) at dilution of 1:50 (under 40x lens).