

Allgemeine Informationen

Katalog-Nr.: 23254-1-AP	GenBank-Zugangsnummer: BC009244	Reinigungsmethode: Antigen-Affinitätsreinigung
Größe: 150ul, Konzentration: 850 µg/ml von Nanodrop und 473 µg/ml durch die Bradford-Methode mit BSA als Standard;	GeneID (NCBI): 3418	Empfohlene Verdünnungen: WB 1:500-1:3000 IHC 1:20-1:200 IF 1:20-1:200
Wirt: Kaninchen	Vollständiger Name: isocitrate dehydrogenase 2 (NADP+), mitochondrial	
Isotyp: IgG	Berechnete Masse: 452 aa, 51 kDa	
Immunogen Katalognummer: AG19748	Beobachtete Masse: 41-47 kDa	

Anwendungen

Geprüfte Anwendungen: IF, IHC, WB, ELISA	Positivkontrollen:
Getestete Reaktivität: Human, Maus, Ratte	WB: HEK-293-Zellen, DU 145-Zellen, Jurkat-Zellen, Maushirngewebe, Mauslebergewebe, Mausnierengewebe, Rattenlebergewebe, Rattennierengewebe
Hinweis-IHC: Antigendemaskierung mit TE- Puffer pH 9,0 empfohlen. (*) Wahlweise kann die Antigendemaskierung auch mit Citratpuffer pH 6,0 erfolgen.	IHC: humanes Herzgewebe, IF: HepG2-Zellen,

Hintergrundinformationen

IDH2, also named as IDP and ICD-M, belongs to the isocitrate and isopropylmalate dehydrogenases family. It plays a role in intermediary metabolism and energy production. IDH2 is a mitochondrial NADP-dependent isocitrate dehydrogenase that catalyzes oxidative decarboxylation of isocitrate to alpha-ketoglutarate, producing NADPH. It may tightly associate or interact with the pyruvate dehydrogenase complex. IDH1 and IDH2 mutations could also contribute to tumorigenesis and cancer progression through increased mutagenesis. IDH2 has 2 isoforms with the MW of 51 kDa and 45 kDa, and the mature form is about 47 kDa and 41 kDa with the N-terminal transit peptide cleaved. This antibody is specific to IDH2.

Lagerung

Lagerungsbedingungen:
Bei -20°C lagern. Nach dem Versand ein Jahr lang stabil

Lagerungspuffer:
PBS mit 0.02% Natriumazid und 50% Glycerin pH 7.3.

Aliquotieren ist nicht notwendig bei -20°C Lagerung

*** 20ul-Größen enthalten 0.1% BSA

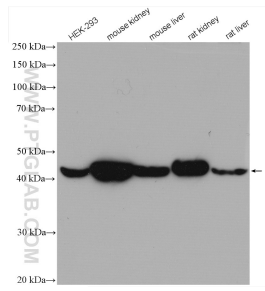
For technical support and original validation data for this product please contact:

T: 1 (888) 4PTGLAB (1-888-478-4522) (toll free
in USA), or 1(312) 455-8498 (outside USA)

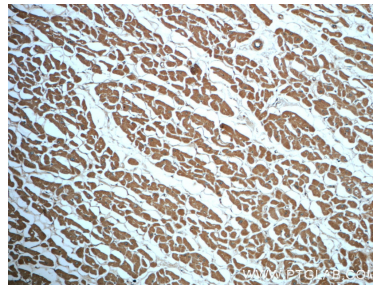
E: proteintech@ptglab.com
W: ptglab.com

This product is exclusively available under Proteintech Group brand and is not available to purchase from any other manufacturer.

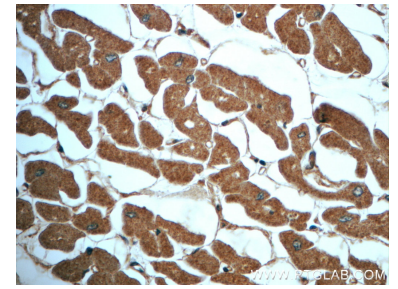
Ausgewählte Validierungsdaten



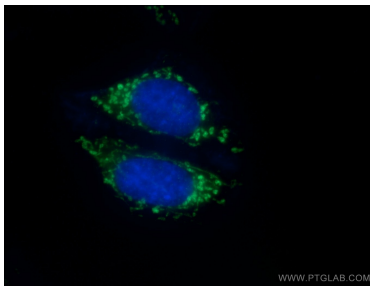
Various lysates were subjected to SDS PAGE followed by western blot with 23254-1-AP (IDH2 antibody) at dilution of 1:1500 incubated at room temperature for 1.5 hours.



Immunohistochemical analysis of paraffin-embedded human heart slide using 23254-1-AP (IDH2 Antibody) at dilution of 1:50.



Immunohistochemical analysis of paraffin-embedded human heart slide using 23254-1-AP (IDH2 Antibody) at dilution of 1:50.



Immunofluorescent analysis of (10% Formaldehyde) fixed HepG2 cells using 23254-1-AP (IDH2 antibody) at dilution of 1:50 and Alexa Fluor 488-conjugated AffiniPure Goat Anti-Rabbit IgG(H+L).