

Nur für Forschungszwecke

# TOPBP1 Polyklonaler Antikörper

Katalog-Nr.: 23340-1-AP

1 Publikationen



## Allgemeine Informationen

<b>Katalog-Nr.:</b> 23340-1-AP	<b>GenBank-Zugangsnummer:</b> BC126209	<b>Reinigungsmethode:</b> Antigen-affinitätsgereinigt
<b>Größe:</b> 150ul, Konzentration: 1000 µg/ml von 11073 Nanodrop und 460 µg/ml durch die Bradford-Methode mit BSA als Standard;	<b>GeneID (NCBI):</b> 11073	<b>Empfohlene Verdünnungen:</b> WB 1:500-1:1000
<b>Wirt:</b> Kaninchen	<b>Vollständiger Name:</b> topoisomerase (DNA) II binding protein 1	
<b>Isotyp:</b> IgG	<b>Berechnete Masse:</b> 1522 aa, 171 kDa	
<b>Immunogen Katalognummer:</b> AG18961	<b>Beobachtete Masse:</b> 171 kDa	

## Anwendungen

<b>Geprüfte Anwendungen:</b> WB, ELISA	<b>Positivkontrollen:</b> WB: HeLa-Zellen,
<b>In Publikationen genannte Anwendungen:</b> IF	
<b>Getestete Reaktivität:</b> Human	
<b>Zitierte Arten:</b> Maus	

## Hintergrundinformationen

Human DNA topoisomerase II binding protein 1 (TopBP1) contains eight BRCT motifs that are found in proteins regulating the DNA damage response, transcription, and replication (1). In addition, TopBP1 shares sequence similarity with the fission yeast Rad4/Cut5 protein and the budding yeast DPB11 protein, both of which are required for DNA damage control and/or replication checkpoint control (2,3). Phosphorylation of TopBP1 occurs in response to DNA double-strand breaks and replication blocks (2). TopBP1 forms nuclear foci and localizes to the sites of DNA damage or the arrested replication forks (2,3). Downregulation of TopBP1 leads to reduced cell survival, probably due to increased apoptosis (2). TopBP1 functions as a transcriptional coactivator by enhancing the human papillomavirus (HPV) transcription/replication factor E2 (1). In addition, the HECT-domain ubiquitin ligase, hHYD, cooperates with TopBP1 in DNA damage response (4). TopBP1 specifically interacts with the C-terminal region of topoisomerase II beta, which suggests a supportive role for TopBP1 in the catalytic reactions of topoisomerase II beta through transient breakages of DNA strands (5). The gene encoding TopBP1 maps to chromosome 3q22.2 (5).

## Bemerkenswerte Veröffentlichungen

Verfasser	Pubmed ID	Journal	Anwendung
Mengneng Xiong	35284939	Biol Reprod	IF

## Lagerung

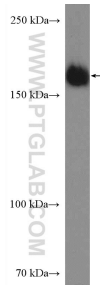
**Lagerungsbedingungen:**  
Bei -20°C lagern. Nach dem Versand ein Jahr lang stabil  
**Lagerungspuffer:**  
PBS mit 0.02% Natriumazid und 50% Glycerin pH 7.3.  
Aliquotieren ist nicht notwendig bei -20°C Lagerung

\*\*\* 20ul-Größen enthalten 0.1% BSA

For technical support and original validation data for this product please contact:  
T: 1 (888) 4PTGLAB (1-888-478-4522) (toll free in USA), or 1(312) 455-8498 (outside USA)  
E: proteintech@ptglab.com  
W: ptglab.com

This product is exclusively available under Proteintech Group brand and is not available to purchase from any other manufacturer.

## Ausgewählte Validierungsdaten



HeLa cells were subjected to SDS PAGE followed by western blot with 23340-1-AP (TOPBP1 Antibody) at dilution of 1:600 incubated at room temperature for 1.5 hours.