

Nur für Forschungszwecke

Chromogranin A Polyklonaler Antikörper



Katalog-Nr.: 23342-1-AP

1 Publikationen

Allgemeine Informationen

Katalog-Nr.: 23342-1-AP	GenBank-Zugangsnummer: BC006459	Reinigungsmethode: Antigen-Affinitätsreinigung
Größe: 150ul, Konzentration: 1000 µg/ml von 1113 Nanodrop;	GeneID (NCBI): chromogranin A (parathyroid secretory protein 1)	Empfohlene Verdünnungen: IHC 1:200-1:800
Wirt: Kaninchen	Vollständiger Name: chromogranin A (parathyroid secretory protein 1)	
Isotyp: IgG	Berechnete Masse: 51 kDa	
Immunogen Katalognummer: AG19780		

Anwendungen

Geprüfte Anwendungen: IHC, ELISA	Positivkontrollen: IHC: humanes Pankreasgewebe, humanes Appendizitis-Gewebe, humanes Dünndarmgewebe, humanes Kolongewebe, humanes Lungenkarzinomgewebe, Maus-Kolongewebe, Maus-Pankreasgewebe
In Publikationen genannte Anwendungen: WB	
Getestete Reaktivität: Human, Maus	
Zitierte Arten: Human	
Hinweis-IHC: Antigendemaskierung mit TE-Puffer pH 9,0 empfohlen. (*) Wahlweise kann die Antigendemaskierung auch mit Citratpuffer pH 6,0 erfolgen.	

Hintergrundinformationen

Chromogranin A is a member of the granin family of neuroendocrine secretory proteins. It is located in secretory vesicles of neurons and endocrine cells. Chromogranin A is the precursor to several functional peptides including vasostatin, pancreastatin, catestatin and parastatin. These peptides negatively modulate the neuroendocrine function of the releasing cell (autocrine) or nearby cells (paracrine). CgA is one of the most used tumor markers in NET's (neuroendocrine tumors), and elevated CgA concentrations have been demonstrated in serum or plasma of patients with different types of these tumors.

Bemerkenswerte Veröffentlichungen

Verfasser	Pubmed ID	Journal	Anwendung
Buqing Ye	32449550	EMBO J	WB

Lagerung

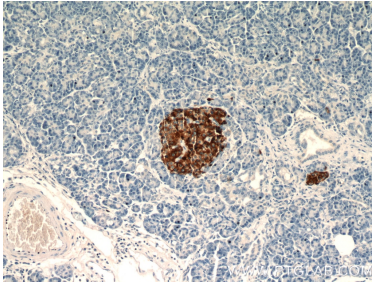
Lagerungsbedingungen:
Bei -20°C lagern. Nach dem Versand ein Jahr lang stabil
Lagerungspuffer:
PBS mit 0.02% Natriumazid und 50% Glycerin pH 7.3.
Aliquotieren ist nicht notwendig bei -20°C Lagerung

*** 20ul-Größen enthalten 0.1% BSA

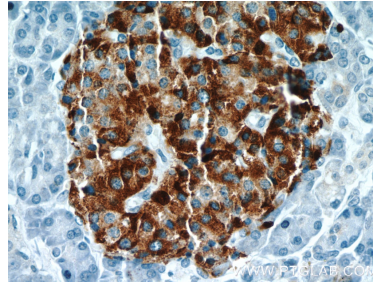
For technical support and original validation data for this product please contact:
T: 1 (888) 4PTGLAB (1-888-478-4522) (toll free in USA), or 1(312) 455-8498 (outside USA)
E: proteintech@ptglab.com
W: ptglab.com

This product is exclusively available under Proteintech Group brand and is not available to purchase from any other manufacturer.

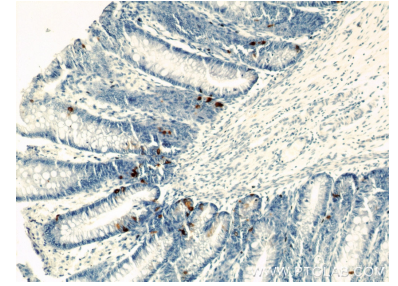
Ausgewählte Validierungsdaten



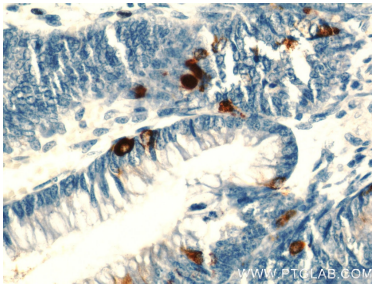
Immunohistochemical analysis of paraffin-embedded human pancreas using 23342-1-AP (Chromogranin A antibody) at dilution of 1:400 (under 10x lens).



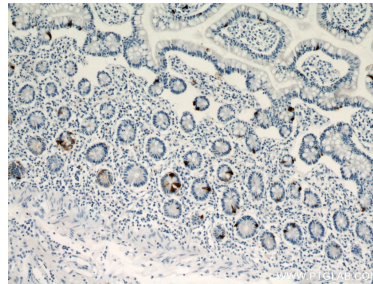
Immunohistochemical analysis of paraffin-embedded human pancreas using 23342-1-AP (Chromogranin A antibody) at dilution of 1:400 (under 40x lens).



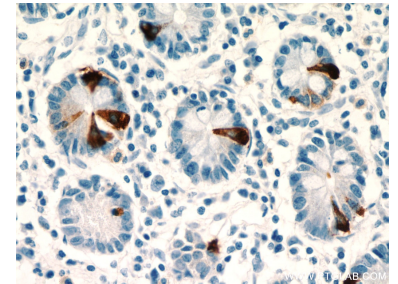
Immunohistochemical analysis of paraffin-embedded human colon using 23342-1-AP (Chromogranin A antibody) at dilution of 1:800 (under 10x lens).



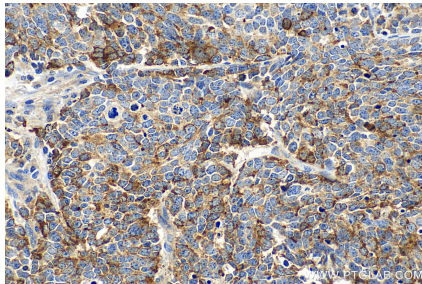
Immunohistochemical analysis of paraffin-embedded human colon using 23342-1-AP (Chromogranin A antibody) at dilution of 1:800 (under 40x lens).



Immunohistochemical analysis of paraffin-embedded human small intestine using 23342-1-AP (Chromogranin A antibody) at dilution of 1:800 (under 10x lens).



Immunohistochemical analysis of paraffin-embedded human small intestine using 23342-1-AP (Chromogranin A antibody) at dilution of 1:800 (under 40x lens).



Immunohistochemical analysis of paraffin-embedded human lung cancer tissue slide using 23342-1-AP (Chromogranin A antibody) at dilution of 1:600 (under 40x lens). Heat mediated antigen retrieval with Tris-EDTA buffer (pH 9.0).