

Nur für Forschungszwecke

FOLR1 Polyklonaler Antikörper

Katalog-Nr.: 23355-1-AP

Vorgestelltes Produkt

9 Publikationen



Allgemeine Informationen

Katalog-Nr.: 23355-1-AP	GenBank-Zugangsnummer: BC002947	Reinigungsmethode: Antigen-Affinitätsreinigung
Größe: 150ul, Konzentration: 650 µg/ml von Nanodrop und 527 µg/ml durch die Bradford-Methode mit BSA als Standard;	GeneID (NCBI): 2348	Empfohlene Verdünnungen: WB 1:2000-1:12000 IHC 1:50-1:500 IF 1:20-1:200
Wirt: Kaninchen	Vollständiger Name: folate receptor 1 (adult)	
Isotyp: IgG	Berechnete Masse: 257 aa, 30 kDa	
Immunogen Katalognummer: AG19959	Beobachtete Masse: 38 kDa	

Anwendungen

Geprüfte Anwendungen: IF, IHC, WB, ELISA	Positivkontrollen: WB : HeLa-Zellen, JAR-Zellen
In Publikationen genannte Anwendungen: IF, IHC, WB	IHC : humanes Mammakarzinomgewebe,
Getestete Reaktivität: Human	IF : HeLa-Zellen,
Zitierte Arten: Human, Ratte	

Hinweis-IHC: Antigenmaskierung mit TE-Puffer pH 9,0 empfohlen. (*) Wahlweise kann die Antigenmaskierung auch mit Citratpuffer pH 6,0 erfolgen.

Hintergrundinformationen

Folate receptor 1 (FOLR1), also known as folate receptor alpha or adult folate-binding protein (FBP), is a 38-kDa glycoprotein belonging to the folate receptor family (PMID:15094207; 23528302). The receptor binds to folate and reduced folic acid derivatives and mediates delivery of 5-methyltetrahydrofolate to the interior of cells. FOLR1 is a secreted protein that either anchors to membranes via a glycosyl-phosphatidylinositol linkage or exists in a soluble form. FOLR1 expression is often limited to the apical surfaces of epithelium in the lung, kidney and choroid plexus but is differentially overexpressed in a variety of solid tumors such as ovarian cancer, non-small cell lung cancer, breast cancer, kidney cancer and high-grade osteosarcoma (PMID: 23528302; 23357463).

Bemerkenswerte Veröffentlichungen

Verfasser	Pubmed ID	Journal	Anwendung
Xiao Han	36054333	Hum Mutat	WB,IF
Divinah Manoharan	33974409	ACS Nano	WB,IHC
Jing Liu	33970635	J Am Chem Soc	WB

Lagerung

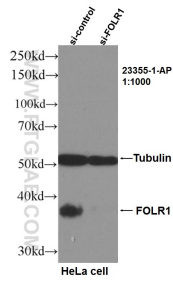
Lagerungsbedingungen:
Bei -20°C lagern. Nach dem Versand ein Jahr lang stabil
Lagerungspuffer:
PBS mit 0.02% Natriumazid und 50% Glycerin pH 7.3.
Aliquotieren ist nicht notwendig bei -20°C Lagerung

*** 20ul-Größen enthalten 0.1% BSA

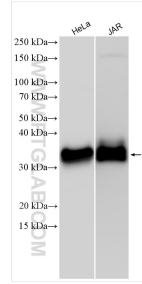
For technical support and original validation data for this product please contact:
T: 1 (888) 4PTGLAB (1-888-478-4522) (toll free in USA), or 1(312) 455-8498 (outside USA)
E: proteintech@ptglab.com
W: ptglab.com

This product is exclusively available under Proteintech Group brand and is not available to purchase from any other manufacturer.

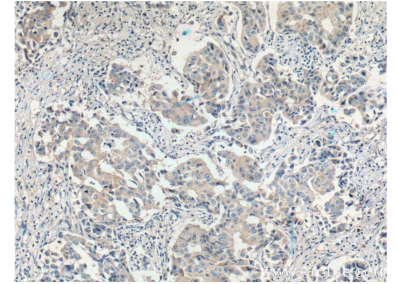
Ausgewählte Validierungsdaten



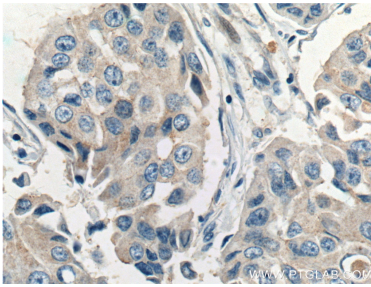
WB result of FOLR1 antibody (23355-1-AP, 1:1000) with si-Control and si-FOLR1 transfected HeLa cells.



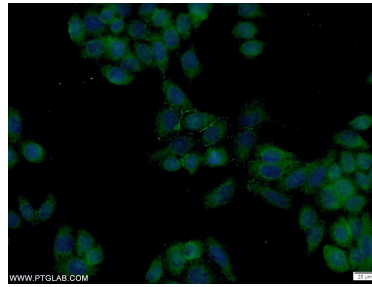
Various lysates were subjected to SDS PAGE followed by western blot with 23355-1-AP (FOLR1 antibody) at dilution of 1:6000 incubated at room temperature for 1.5 hours.



Immunohistochemical analysis of paraffin-embedded human breast cancer tissue slide using 23355-1-AP (FOLR1 Antibody) at dilution of 1:200 (under 10x lens). Heat mediated antigen retrieval with Tris-EDTA buffer (pH 9.0).



Immunohistochemical analysis of paraffin-embedded human breast cancer tissue slide using 23355-1-AP (FOLR1 Antibody) at dilution of 1:200 (under 40x lens). Heat mediated antigen retrieval with Tris-EDTA buffer (pH 9.0).



Immunofluorescent analysis of HeLa cells using 23355-1-AP (FOLR1 antibody) at dilution of 1:50 and Alexa Fluor 488-conjugated AffiniPure Goat Anti-Rabbit IgG(H+L).