

Allgemeine Informationen

Katalog-Nr.: 23369-1-AP	GenBank-Zugangsnummer: BC004168	Reinigungsmethode: Antigen-Affinitätsreinigung
Größe: 150ul , Konzentration: 1500 µg/ml von63943 Nanodrop und 440 µg/ml durch die Bradford-Methode mit BSA als Standard;	GeneID (NCBI): Vollständiger Name: FK506 binding protein like	Empfohlene Verdünnungen: WB 1:500-1:1000 IHC 1:100-1:400 IF 1:50-1:500
Wirt: Kaninchen	Berechnete Masse: 349 aa, 38 kDa	
Isotyp: IgG	Beobachtete Masse: 42-48 kDa	
Immunogen Katalognummer: AG19702		

Anwendungen

Geprüfte Anwendungen: IF, IHC, WB, ELISA	Positivkontrollen:
Getestete Reaktivität: Human	WB : HeLa-Zellen, IHC : humanes Ovarialkarzinomgewebe, IF : HeLa-Zellen,
Hinweis-IHC: Antigenmaskierung mit TE-Puffer pH 9,0 empfohlen. (*) Wahlweise kann die Antigenmaskierung auch mit Citratpuffer pH 6,0 erfolgen.	

Hintergrundinformationen

FKBPL, also named as DIR1, NG7 and WISp39, has similarity to the immunophilin protein family, which plays a role in immunoregulation and basic cellular processes involving protein folding and trafficking. FKBPL levels may be a prognostic indicator and determinant of response to endocrine therapy(PMID:20103631, 15664193) .It can be detected the band between 38 kDa and 48 kDa by western blot.

Lagerung

Lagerungsbedingungen:
Bei -20°C lagern. Nach dem Versand ein Jahr lang stabil
Lagerungspuffer:
PBS mit 0.02% Natriumazid und 50% Glycerin pH 7.3.
Aliquotieren ist nicht notwendig bei -20°C Lagerung

***** 20ul-Größen enthalten 0.1% BSA**

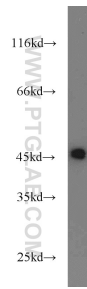
For technical support and original validation data for this product please contact:

T: 1 (888) 4PTGLAB (1-888-478-4522) (toll free
in USA), or 1(312) 455-8498 (outside USA)

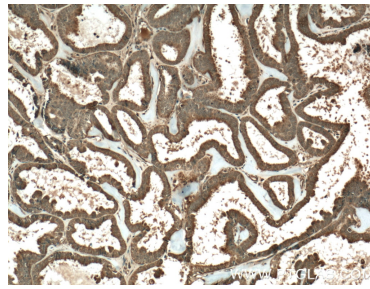
E: proteintech@ptglab.com
W: ptglab.com

This product is exclusively available under Proteintech Group brand and is not available to purchase from any other manufacturer.

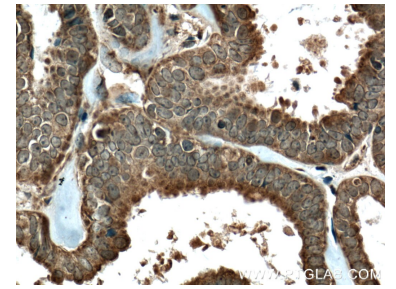
Ausgewählte Validierungsdaten



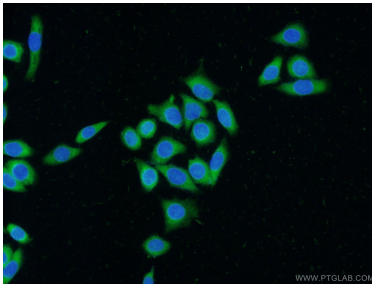
HeLa cells were subjected to SDS PAGE followed by western blot with 23369-1-AP (FKBPL antibody) at dilution of 1:800 incubated at room temperature for 1.5 hours.



Immunohistochemical analysis of paraffin-embedded human ovary tumor tissue slide using 23369-1-AP (FKBPL Antibody) at dilution of 1:200 (under 10x lens). Heat mediated antigen retrieval with Tris-EDTA buffer (pH 9.0).



Immunohistochemical analysis of paraffin-embedded human ovary tumor tissue slide using 23369-1-AP (FKBPL Antibody) at dilution of 1:200 (under 40x lens). Heat mediated antigen retrieval with Tris-EDTA buffer (pH 9.0).



Immunofluorescent analysis of (-20°C Ethanol) fixed HeLa cells using 23369-1-AP (FKBPL antibody) at dilution of 1:50 and Alexa Fluor 488-conjugated AffiniPure Goat Anti-Rabbit IgG(H+L).