

Nur für Forschungszwecke

# PCF11 Polyklonaler Antikörper

Katalog-Nr.: 23540-1-AP

Vorgestelltes Produkt

4 Publikationen



## Allgemeine Informationen

<b>Katalog-Nr.:</b> 23540-1-AP	<b>GenBank-Zugangsnummer:</b> BC146778	<b>Reinigungsmethode:</b> Antigen-affinitätsgereinigt
<b>Größe:</b> 150ul, Konzentration: 600 µg/ml von Nanodrop;	<b>GeneID (NCBI):</b> 51585	<b>Empfohlene Verdünnungen:</b> WB 1:500-1:2000
<b>Wirt:</b> Kaninchen	<b>Vollständiger Name:</b> PCF11, cleavage and polyadenylation factor subunit, homolog (S. cerevisiae)	
<b>Isotyp:</b> IgG	<b>Berechnete Masse:</b> 1555 aa, 173 kDa	
<b>Immunogen Katalognummer:</b> AG20263	<b>Beobachtete Masse:</b> 173 kDa	

## Anwendungen

<b>Geprüfte Anwendungen:</b> WB, ELISA	<b>Positivkontrollen:</b> WB : K-562-Zellen, HeLa-Zellen
<b>In Publikationen genannte Anwendungen:</b> CoIP, WB	
<b>Getestete Reaktivität:</b> Human	
<b>Zitierte Arten:</b> Human, Maus	

## Hintergrundinformationen

In *Saccharomyces cerevisiae*, the cleavage/polyadenylation factor Pcf11 is a crucial regulatory factor required for recruiting polyadenylation machinery to elongating RNA polymerase II (RNAPII), and is necessary for correct transcriptional termination. Pcf11 (PCF11, cleavage and polyadenylation factor subunit, homolog (*S. cerevisiae*)), is a 1,555 amino acid nuclear protein that is a component of pre-mRNA cleavage complex II. It is suggested that Pcf11 is capable of promoting the dissociation of Pol II elongation complexes from DNA. Pcf11 contains a CTD-interaction domain that binds in a phospho-dependent manner to the heptad repeats within the RNA polymerase II CTD. The gene encoding Pcf11 is located on human chromosome 11, which houses over 1,400 genes and comprises nearly 4% of the human genome. Jervell and Lange-Nielsen syndrome, Jacobsen syndrome, Niemann-Pick disease, hereditary angioedema and Smith-Lemli-Opitz syndrome are associated with defects in genes that map to chromosome 11. This antibody is specific to the 173kd human PCF11 protein.

## Bemerkenswerte Veröffentlichungen

Verfasser	Pubmed ID	Journal	Anwendung
Jihae Shin	34244761	Nucleic Acids Res	WB
Geneva R LaForce	35139363	Neuron	CoIP
Asya Khleborodova	27060432	Biochimie	WB

## Lagerung

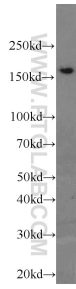
**Lagerungsbedingungen:**  
Bei -20°C lagern. Nach dem Versand ein Jahr lang stabil  
**Lagerungspuffer:**  
PBS mit 0.02% Natriumazid und 50% Glycerin pH 7.3.  
Aliquotieren ist nicht notwendig bei -20°C Lagerung

\*\*\* 20ul-Größen enthalten 0.1% BSA

For technical support and original validation data for this product please contact:  
T: 1 (888) 4PTGLAB (1-888-478-4522) (toll free in USA), or 1(312) 455-8498 (outside USA)  
E: proteintech@ptglab.com  
W: ptglab.com

This product is exclusively available under Proteintech Group brand and is not available to purchase from any other manufacturer.

## Ausgewählte Validierungsdaten



K-562 cells were subjected to SDS PAGE followed by western blot with 23540-1-AP (PCF11 antibody) at dilution of 1:1000 incubated at room temperature for 1.5 hours.