

Nur für Forschungszwecke

KGA/GAM/GAC Polyklonaler Antikörper



Katalog-Nr.: 23549-1-AP

Vorgestelltes Produkt

2 Publikationen

Allgemeine Informationen

Katalog-Nr.:
23549-1-AP

Größe:
150ul, Konzentration: 750 µg/ml von
Nanodrop und 493 µg/ml durch die
Bradford-Methode mit BSA als
Standard;

Wirt:
Kaninchen

Isotyp:
IgG

Immunogen Katalognummer:
AG20354

GenBank-Zugangsnummer:
BC038507

GeneID (NCBI):
2744

Vollständiger Name:
glutaminase

Berechnete Masse:
669 aa, 73 kDa

Beobachtete Masse:
58 kDa, 65 kDa, 83 kDa

Reinigungsmethode:

Antigen-Affinitätsreinigung

Empfohlene Verdünnungen:

WB 1:500-1:1000
IP 0.5-4.0 µg für IP und 1:500-1:2000
für WB
IHC 1:20-1:200
IF 1:25-1:200

Anwendungen

Geprüfte Anwendungen:

IF, IHC, IP, WB, ELISA

In Publikationen genannte Anwendungen:

IF, WB

Getestete Reaktivität:

Human, Maus, Ratte

Zitierte Arten:

Human

Hinweis-IHC: Antigenmaskierung mit TE-Puffer pH 9,0 empfohlen. (*) Wahlweise kann die Antigenmaskierung auch mit Citratpuffer pH 6,0 erfolgen.

Positivkontrollen:

WB : HEK-293-Zellen, HeLa-Zellen, Maushirngewebe, Mauslebergewebe, Rattenhirngewebe

IP : HEK-293-Zellen,

IHC : humanes Nierengewebe, humanes Hirngewebe

IF : HEK-293-Zellen, HeLa-Zellen

Hintergrundinformationen

GLS, also named as GLS1 and KIAA0838, belongs to the glutaminase family. It catalyzes the first reaction in the primary pathway for the renal catabolism of glutamine. Glutaminase-, glutamate-, and taurine-immunoreactive neurons develop neurofibrillary tangles in Alzheimer's disease. The glutaminase band in AA/C1 cells is more intense than in HT29 cells, in accordance with measurements of glutaminase activity, and had the same molecular mass of approx. 63 kDa (PMID:12408749). Ping Gao et al. (2009) determined that mitochondrial glutaminase expression (GLS, molecular mass of ~58 kDa) is increased ~10-fold in response to Myc. It also reveals a molecular weight of 83-84 kDa as a phosphate-dependent glutaminase (PMID:447624;7512428). GLS has 3 isoforms produced by alternative splicing and this antibody can recognize all the 3 isoforms (KGA, GAM, GAC) of GLS.

Bemerkenswerte Veröffentlichungen

Verfasser	Pubmed ID	Journal	Anwendung
Bin Jiang	35381197	Mol Cell	WB, IF
M Ryan Smith	26774751	Redox Biol	WB

Lagerung

Lagerungsbedingungen:

Bei -20°C lagern. Nach dem Versand ein Jahr lang stabil

Lagerungspuffer:

PBS mit 0.02% Natriumazid und 50% Glycerin pH 7.3.

Aliquotieren ist nicht notwendig bei -20°C Lagerung

*** 20ul-Größen enthalten 0.1% BSA

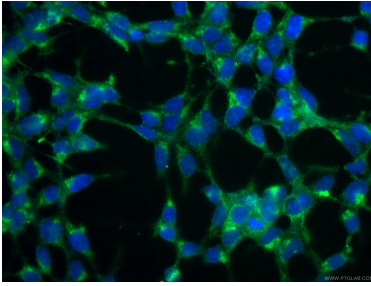
For technical support and original validation data for this product please contact:

T: 1 (888) 4PTGLAB (1-888-478-4522) (toll free in USA), or 1(312) 455-8498 (outside USA)

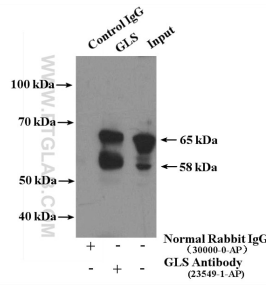
E: proteintech@ptglab.com
W: ptglab.com

This product is exclusively available under Proteintech Group brand and is not available to purchase from any other manufacturer.

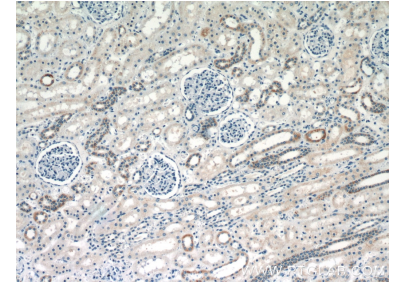
Ausgewählte Validierungsdaten



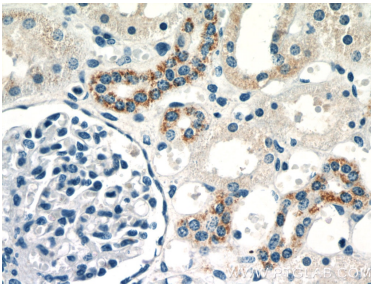
Immunofluorescent analysis of (-20°C Ethanol) fixed HEK-293 cells using 23549-1-AP (KGA/GAM/GAC antibody), at dilution of 1:200 and CoraLite®488-Conjugated AffiniPure Goat Anti-Rabbit IgG(H+L).



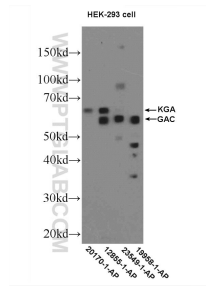
IP Result of anti-KGA/GAM/GAC (IP:23549-1-AP, 4ug; Detection:23549-1-AP 1:1000) with HEK-293 cells lysate 1200ug.



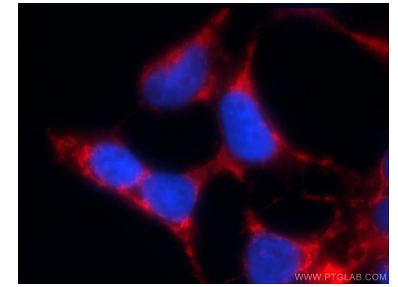
Immunohistochemical analysis of paraffin-embedded human kidney slide using 23549-1-AP (KGA/GAM/GAC antibody at dilution of 1:50.



Immunohistochemical analysis of paraffin-embedded human kidney slide using 23549-1-AP (KGA/GAM/GAC antibody at dilution of 1:50.



HEK-293 cells were subjected to SDS PAGE followed by western blot with 23549-1-AP (KGA/GAM/GAC antibody at dilution of 1:600 incubated at 4 degree celsius over night.



Immunofluorescent analysis of HEK-293 cells using 23549-1-AP (KGA/GAM/GAC antibody) at dilution of 1:25 and Rhodamine-Goat anti-Rabbit IgG.