

Nur für Forschungszwecke

# MUC1/CA15-3 C-terminal Polyklonaler Antikörper



Katalog-Nr.: 23614-1-AP

Vorgestelltes Produkt

6 Publikationen

## Allgemeine Informationen

<b>Katalog-Nr.:</b> 23614-1-AP	<b>GenBank-Zugangsnummer:</b> BC120975	<b>Reinigungsmethode:</b> Antigen-Affinitätsreinigung
<b>Größe:</b> 150ul, Konzentration: 750 µg/ml von Nanodrop;	<b>GeneID (NCBI):</b> 4582	<b>Empfohlene Verdünnungen:</b> WB 1:500-1:2000 IHC 1:50-1:500
<b>Wirt:</b> Kaninchen	<b>Vollständiger Name:</b> mucin 1, cell surface associated	
<b>Isotyp:</b> IgG	<b>Berechnete Masse:</b> 1264 aa, 123 kDa	
<b>Immunogen Katalognummer:</b> AG20366	<b>Beobachtete Masse:</b> 23-28 kDa	

## Anwendungen

### Geprüfte Anwendungen:

FC, IHC, WB, ELISA

### In Publikationen genannte Anwendungen:

FC, IHC, WB

### Getestete Reaktivität:

Human

### Zitierte Arten:

Human, Maus

### Positivkontrollen:

**WB:** DU 145-Zellen, BxPC-3-Zellen, MCF-7-Zellen, PC-3-Zellen

**IHC:** humanes Pankreaskarzinomgewebe, humanes Mammakarzinomgewebe, humanes Ovarialkarzinomgewebe, humanes Tonsillitisgewebe

**Hinweis-IHC: Antigenmaskierung mit TE-Puffer pH 9,0 empfohlen. (\*) Wahlweise kann die Antigenmaskierung auch mit Citratpuffer pH 6,0 erfolgen.**

## Hintergrundinformationen

MUC1 is a type I transmembrane glycoprotein expressed by various epithelial cells of female reproductive tract, lung, breast, kidney, stomach, and pancreas. MUC1 is transcribed as a large precursor gene product, and upon translation, is cleaved in the endoplasmic reticulum, yielding two subunits: the large extracellular N-terminal subunit (MUC1-N, about 120-200 kDa) and the small cytoplasmic C-terminal subunit (MUC1-C, about 23-30 kDa). Among the known mucins, MUC1 is best studied and plays crucial roles in regulating many cellular properties, including cell proliferation, apoptosis, adhesion, and invasion. MUC1 is overexpressed in a wide range of human epithelial malignancies. This antibody was raised against the C-terminal region of human MUC1, thus it recognizes the 23-30 kDa cytoplasmic MUC1.

## Bemerkenswerte Veröffentlichungen

Verfasser	Pubmed ID	Journal	Anwendung
Xiaoyi Gao	34632781	ACS Sens	WB,FC
Xinxing Wang	36439512	Front Oncol	WB,IHC
Wenwen Wang	33758177	Cell Death Discov	WB

## Lagerung

### Lagerungsbedingungen:

Bei -20°C lagern. Nach dem Versand ein Jahr lang stabil

### Lagerungspuffer:

PBS mit 0.02% Natriumazid und 50% Glycerin pH 7.3.

Aliquotieren ist nicht notwendig bei -20°C Lagerung

\*\*\* 20ul-Größen enthalten 0.1% BSA

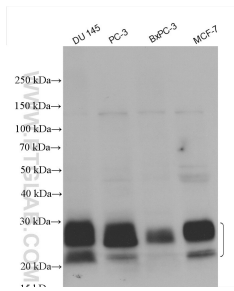
For technical support and original validation data for this product please contact:

T: 1 (888) 4PTGLAB (1-888-478-4522) (toll free in USA), or 1(312) 455-8498 (outside USA)

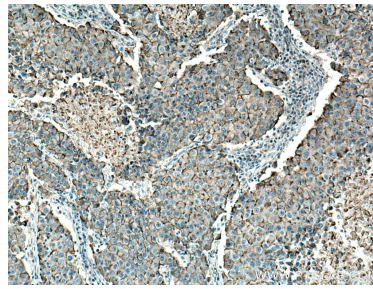
E: proteintech@ptglab.com  
W: ptglab.com

This product is exclusively available under Proteintech Group brand and is not available to purchase from any other manufacturer.

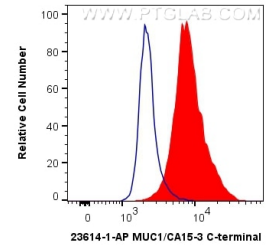
## Ausgewählte Validierungsdaten



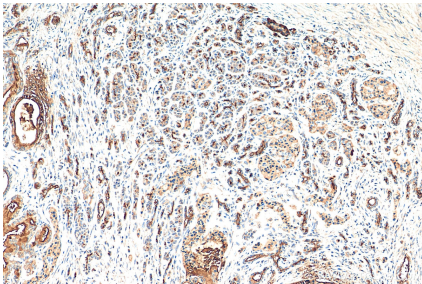
Various lysates were subjected to SDS PAGE followed by western blot with 23614-1-AP (MUC1/CA15-3 C-terminal antibody) at dilution of 1:1000 incubated at room temperature for 1.5 hours.



Immunohistochemical analysis of paraffin-embedded human breast cancer tissue slide using 23614-1-AP (MUC1/CA15-3 C-terminal antibody) at dilution of 1:200 (under 10x lens).



$1 \times 10^6$  MCF-7 cells were intracellularly stained with 0.4  $\mu$ g Anti-Human MUC1/CA15-3 C-terminal (23614-1-AP) and CoraLite<sup>®</sup>488-Conjugated AffiniPure Goat Anti-Rabbit IgG(H+L) at dilution 1:1000 (red), or 0.4  $\mu$ g Control Antibody. Cells were fixed with 4% PFA and permeabilized with Flow Cytometry Perm Buffer (PF00011-C).



Immunohistochemical analysis of paraffin-embedded human pancreas cancer tissue slide using 23614-1-AP (MUC1/CA15-3 C-terminal antibody) at dilution of 1:200 (under 10x lens). Proteolytic pre-treatment mediated antigen retrieval with Tris-EDTA buffer (pH 9.0).