

Allgemeine Informationen

Katalog-Nr.: 23795-1-AP	GenBank-Zugangsnummer: BC146793	Reinigungsmethode: Antigen-affinitätsgereinigt
Größe: 150ul, Konzentration: 700 µg/ml von Nanodrop;	GeneID (NCBI): 5364	Empfohlene Verdünnungen: WB 1:200-1:1000 IHC 1:50-1:500
Wirt: Kaninchen	Vollständiger Name: plexin B1	
Isotyp: IgG	Berechnete Masse: 2135 aa, 232 kDa	
Immunogen Katalognummer: AG20719	Beobachtete Masse: 210 kDa	

Anwendungen

Geprüfte Anwendungen:

FC, IHC, WB, ELISA

In Publikationen genannte Anwendungen:

FC, IF, IHC, WB

Getestete Reaktivität:

Human, Maus

Zitierte Arten:

Human, Maus, Ratte

Hinweis-IHC: Antigendemaskierung mit TE-Puffer pH 9,0 empfohlen. (*) Wahlweise kann die Antigendemaskierung auch mit Citratpuffer pH 6,0 erfolgen.

Positivkontrollen:

WB : Maushirngewebe,

IHC : humanes Nierengewebe, humanes Hirngewebe

Hintergrundinformationen

Semaphorins, originally identified as axon guidance molecules, have also been implicated in angiogenesis, immunoregulation, and cancer (PMID: 16584533). Plexins are main receptors for semaphorins and are thought to control many of the functional effects of semaphorins. PLXNB1 is one of the three plexin-B family members. It is a high-affinity receptor for semaphorin 4D (SEMA4D). Interaction of SEMA4D and PLXNB1 has important physiologic effects in the immune and nervous systems, and is also involved in tumor progression, especially in tumor angiogenesis (PMID: 20858260).

Bemerkenswerte Veröffentlichungen

Verfasser	Pubmed ID	Journal	Anwendung
Lu Liu	35794581	J Transl Med	WB
Bradley A Welch	35170806	J Neuroendocrinol	IF
Kun Wang	33490182	Ann Transl Med	WB

Lagerung

Lagerungsbedingungen:

Bei -20°C lagern. Nach dem Versand ein Jahr lang stabil

Lagerungspuffer:

PBS mit 0.02% Natriumazid und 50% Glycerin pH 7.3.

Aliquotieren ist nicht notwendig bei -20°C Lagerung

***** 20ul-Größen enthalten 0.1% BSA**

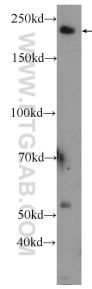
For technical support and original validation data for this product please contact:

T: 1 (888) 4PTGLAB (1-888-478-4522) (toll free in USA), or 1(312) 455-8498 (outside USA)

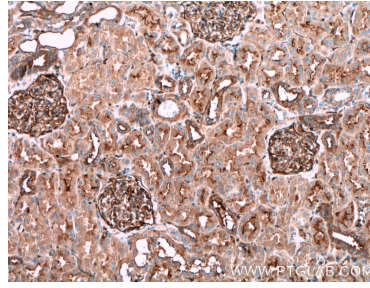
E: proteintech@ptglab.com
 W: ptglab.com

This product is exclusively available under Proteintech Group brand and is not available to purchase from any other manufacturer.

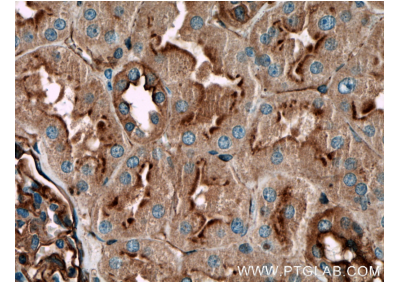
Ausgewählte Validierungsdaten



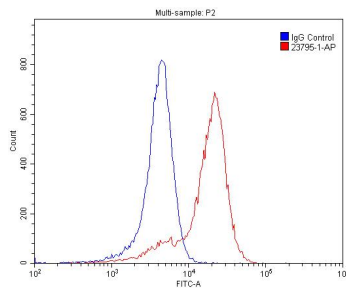
mouse brain tissue were subjected to SDS PAGE followed by western blot with 23795-1-AP (PLXNB1 Antibody) at dilution of 1:300 incubated at room temperature for 1.5 hours.



Immunohistochemical analysis of paraffin-embedded human kidney tissue slide using 23795-1-AP (PLXNB1 antibody) at dilution of 1:200 (under 10x lens).



Immunohistochemical analysis of paraffin-embedded human kidney tissue slide using 23795-1-AP (PLXNB1 antibody) at dilution of 1:200 (under 40x lens).



1×10^6 SH-SY5Y cells were stained with 0.2ug PLXNB1 antibody (23795-1-AP, red) and control antibody (blue). Fixed with 4% PFA blocked with 3% BSA (30 min). Alexa Fluor 488-conjugated AffiniPure Goat Anti-Rabbit IgG(H+L) with dilution 1:1500.