

Nur für Forschungszwecke

# MME,CD10 Polyklonaler Antikörper

Katalog-Nr.:23898-1-AP

2 Publikationen



## Allgemeine Informationen

<b>Katalog-Nr.:</b> 23898-1-AP	<b>GenBank-Zugangsnummer:</b> BC101658	<b>Reinigungsmethode:</b> Antigen-Affinitätsreinigung
<b>Größe:</b> 150ul , Konzentration: 800 µg/ml von Nanodrop und 447 µg/ml durch die Bradford-Methode mit BSA als Standard;	<b>GeneID (NCBI):</b> 4311	<b>Empfohlene Verdünnungen:</b> WB 1:500-1:2000 IHC 1:50-1:500 IF 1:50-1:500
<b>Wirt:</b> Kaninchen	<b>Vollständiger Name:</b> membrane metallo-endopeptidase	
<b>Isotyp:</b> IgG	<b>Berechnete Masse:</b> 750 aa, 86 kDa	
<b>Immunogen Katalognummer:</b> AG20963	<b>Beobachtete Masse:</b> 90-110 kDa	

## Anwendungen

<b>Geprüfte Anwendungen:</b> FC, IF, IHC, WB,ELISA	<b>Positivkontrollen:</b> WB : Mausnierengewebe, humanes Nierengewebe, Rattennierengewebe IHC : humanes Nierengewebe, IF : Mausnierengewebe, HepG2-Zellen
<b>In Publikationen genannte Anwendungen:</b> IF, WB	
<b>Getestete Reaktivität:</b> Human, Maus, Ratte	
<b>Zitierte Arten:</b> Human, Maus	
<b>Hinweis-IHC: Antigendemaskierung mit TE-Puffer pH 9,0 empfohlen. (*) Wahlweise kann die Antigendemaskierung auch mit Citratpuffer pH 6,0 erfolgen.</b>	

## Hintergrundinformationen

MME is also names as neprilysin,CALLA,NEP,SFE,CD10 and belongs to the peptidase M13 family.It is a glycoprotein that is particularly abundant in kidney, where it is present on the brush border of proximal tubules and on glomerular epithelium.CD10 has been considered a useful marker in the diagnosis of renal carcinomas, because of its expression in clear cell and papillary renal cell carcinomas and its absence in chromophobe renal cell carcinomas(PMID:15286660).

## Bemerkenswerte Veröffentlichungen

Verfasser	Pubmed ID	Journal	Anwendung
Caiyun Li	34644519	Biochem Cell Biol	WB
Xintiu Zeng	29669342	Cell Physiol Biochem	IF

## Lagerung

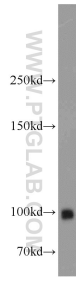
**Lagerungsbedingungen:**  
Bei -20°C lagern. Nach dem Versand ein Jahr lang stabil  
**Lagerungspuffer:**  
PBS mit 0.02% Natriumazid und 50% Glycerin pH 7.3.  
Aliquotieren ist nicht notwendig bei -20°C Lagerung

\*\*\* 20ul-Größen enthalten 0.1% BSA

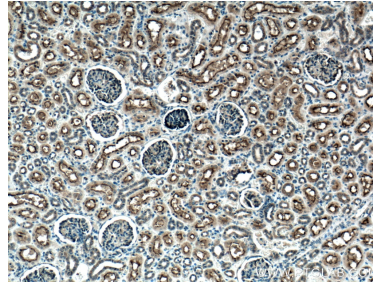
For technical support and original validation data for this product please contact:  
T: 1 (888) 4PTGLAB (1-888-478-4522) (toll free in USA), or 1(312) 455-8498 (outside USA)  
E: proteintech@ptglab.com  
W: ptglab.com

This product is exclusively available under Proteintech Group brand and is not available to purchase from any other manufacturer.

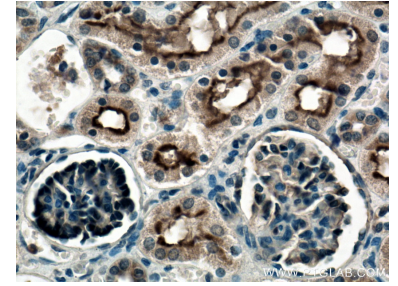
## Ausgewählte Validierungsdaten



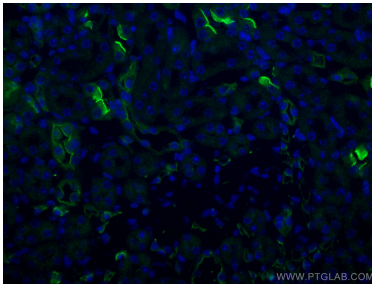
mouse kidney tissue was subjected to SDS PAGE followed by western blot with 23898-1-AP (MME,CD10 antibody) at dilution of 1:1000 incubated at room temperature for 1.5 hours.



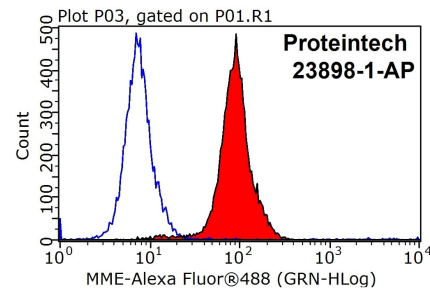
Immunohistochemical analysis of paraffin-embedded human kidney tissue slide using 23898-1-AP (MME,CD10 antibody) at dilution of 1:200 (under 10x lens. Heat mediated antigen retrieval with Tris-EDTA buffer (pH 9.0).



Immunohistochemical analysis of paraffin-embedded human kidney tissue slide using 23898-1-AP (MME,CD10 antibody) at dilution of 1:200 (under 40x lens. Heat mediated antigen retrieval with Tris-EDTA buffer (pH 9.0).



Immunofluorescent analysis of (4% PFA) fixed mouse kidney tissue using MME,CD10 antibody (23898-1-AP) at dilution of 1:200 and CoraLite@488-Conjugated AffiniPure Goat Anti-Rabbit IgG(H+L).



1x10<sup>6</sup> HepG2 cells were stained with .2ug MME,CD10 antibody (23898-1-AP, red) and control antibody (blue). Fixed with 90% MeOH blocked with 3% BSA (30 min). Alexa Fluor 488-conjugated AffiniPure Goat Anti-Rabbit IgG(H+L) with dilution 1:1000.