

Allgemeine Informationen

Katalog-Nr.:
23903-1-AP

Größe:
150ul, Konzentration: 193 µg/ml durch die Bradford-Methode mit BSA als Standard;

Wirt:
Kaninchen

Isotyp:
IgG

Immunogen Katalognummer:
AG20985

GenBank-Zugangsnummer:
BC087839

GeneID (NCBI):
1490

Vollständiger Name:
connective tissue growth factor

Berechnete Masse:
349 aa, 38 kDa

Reinigungsmethode:

Antigen-Affinitätsreinigung

Empfohlene Verdünnungen:

WB 1:500-1:2000
IP 0.5-4.0 µg für IP und 1:500-1:2000 für WB
IHC 1:20-1:200

Anwendungen

Geprüfte Anwendungen:

IHC, IP, WB, ELISA

In Publikationen genannte Anwendungen:

IF, IHC, WB

Getestete Reaktivität:

Human

Zitierte Arten:

Human, Maus, Ratte

Hinweis-IHC: Antigenmaskierung mit TE-Puffer pH 9,0 empfohlen. (*) Wahlweise kann die Antigenmaskierung auch mit Citratpuffer pH 6,0 erfolgen.

Positivkontrollen:

WB: Mausherzgewebe, Maushirngewebe, Mausnierengewebe

IP: Maushirngewebe,

IHC: humanes Kolonkarzinomgewebe, humanes Herzgewebe, humanes Nephroblastomgewebe

Hintergrundinformationen

CTGF, also known as CCN2, is a member of the CCN family of matricellular proteins. CTGF, a cysteine-rich, matrix-associated, heparin-binding protein, is widely expressed in various human tissues and organs. CTGF has important roles in many biological processes, including cell adhesion, migration, proliferation, angiogenesis, skeletal development, and tissue wound repair, and is critically involved in fibrotic disease and several forms of cancers. In western blotting, there are three different forms of CTGF reported: monomeric forms at approximately 36-38 kDa, homodimeric forms at approximately 70 kDa, and lower molecular mass fragment forms.

Bemerkenswerte Veröffentlichungen

| Verfasser | Pubmed ID | Journal | Anwendung |
|----------------|-----------|-------------------------|-----------|
| Kai Yang | 27942222 | Onco Targets Ther | WB |
| Xinliang Zou | 35900670 | J Cardiovasc Transl Res | WB,IHC |
| Shigehisa Aoki | 30406776 | Biomater Sci | WB,IHC |

Lagerung

Lagerungsbedingungen:

Bei -20°C lagern. Nach dem Versand ein Jahr lang stabil

Lagerungspuffer:

PBS mit 0.02% Natriumazid und 50% Glycerin pH 7.3.

Aliquotieren ist nicht notwendig bei -20°C Lagerung

***** 20ul-Größen enthalten 0.1% BSA**

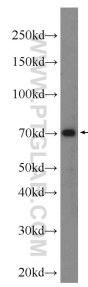
For technical support and original validation data for this product please contact:

T: 1 (888) 4PTGLAB (1-888-478-4522) (toll free in USA), or 1(312) 455-8498 (outside USA)

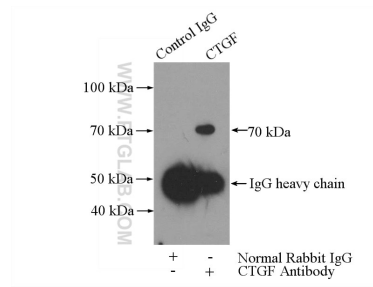
E: proteintech@ptglab.com
W: ptglab.com

This product is exclusively available under Proteintech Group brand and is not available to purchase from any other manufacturer.

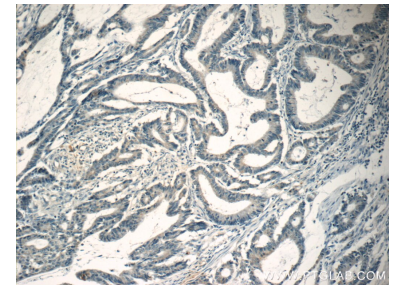
Ausgewählte Validierungsdaten



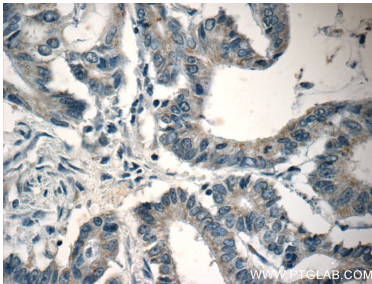
mouse heart tissue were subjected to SDS PAGE followed by western blot with 23903-1-AP (CTGF Antibody) at dilution of 1:1000 incubated at room temperature for 1.5 hours.



IP Result of anti-CTGF (IP:23903-1-AP, 5ug; Detection:23903-1-AP 1:1000) with mouse brain tissue lysate 2640ug.



Immunohistochemical analysis of paraffin-embedded human colon cancer tissue slide using 23903-1-AP (CTGF Antibody) at dilution of 1:50 (under 10x lens).



Immunohistochemical analysis of paraffin-embedded human colon cancer tissue slide using 23903-1-AP (CTGF Antibody) at dilution of 1:50 (under 40x lens).