

Nur für Forschungszwecke

AFAP1L1 Polyklonaler Antikörper

Katalog-Nr.:23909-1-AP



Allgemeine Informationen

| | | |
|---|--|--|
| Katalog-Nr.: 23909-1-AP | GenBank-Zugangsnummer: BC125093 | Reinigungsmethode: Antigen-affinitätsgereinigt |
| Größe: 150ul , Konzentration: 800 µg/ml von Nanodrop und 340 µg/ml durch die Bradford-Methode mit BSA als Standard; | GeneID (NCBI): 134265 | Empfohlene Verdünnungen: WB 1:500-1:1000 |
| Wirt: Kaninchen | Vollständiger Name: actin filament associated protein 1-like 1 | |
| Isotyp: IgG | Berechnete Masse: 768 aa, 86 kDa | |
| Immunogen Katalognummer: AG21006 | Beobachtete Masse: 75-86 kDa | |

Anwendungen

| | |
|--|---|
| Geprüfte Anwendungen: WB, ELISA | Positivkontrollen: WB : COS-7-Zellen, |
| Getestete Reaktivität: Affe, Human | |

Hintergrundinformationen

Actin Filament-Associated Protein of 110 kDa (AFAP-110/AFAP1) is an adaptor protein with multiple protein binding motifs that is known to function as both an actin binding protein and a cSrc activating protein. A homology search of AFAP1 recently identified AFAP1L1 which has a similar sequence, domain structure and cellular localization. AFAP1L1 is highly expressed in human breast, colon and brain tissue. AFAP1L1 interacts with cortactin and involves the invadosomes formation. AFAP1L1 as a prognostic marker has a role in the progression of spindle cell sarcomas.

Lagerung

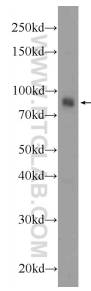
Lagerungsbedingungen:
Bei -20°C lagern. Nach dem Versand ein Jahr lang stabil
Lagerungspuffer:
PBS mit 0.02% Natriumazid und 50% Glycerin pH 7.3.
Aliquotieren ist nicht notwendig bei -20°C Lagerung

***** 20ul-Größen enthalten 0.1% BSA**

For technical support and original validation data for this product please contact:
T: 1 (888) 4PTGLAB (1-888-478-4522) (toll free in USA), or 1(312) 455-8498 (outside USA)
E: proteintech@ptglab.com
W: ptglab.com

This product is exclusively available under Proteintech Group brand and is not available to purchase from any other manufacturer.

Ausgewählte Validierungsdaten



COS-7 cells were subjected to SDS PAGE followed by western blot with 23909-1-AP (AFAP1L1 Antibody) at dilution of 1:600 incubated at room temperature for 1.5 hours.