

Nur für Forschungszwecke

CEP89 Polyklonaler Antikörper

Katalog-Nr.: 24002-1-AP

3 Publikationen



Allgemeine Informationen

Katalog-Nr.: 24002-1-AP	GenBank-Zugangsnummer: BC136328	Reinigungsmethode: Antigen-Affinitätsreinigung
Größe: 150ul, Konzentration: 220 µg/ml von Nanodrop und 220 µg/ml durch die Bradford-Methode mit BSA als Standard;	GeneID (NCBI): 84902	Empfohlene Verdünnungen: WB 1:200-1:1000 IF 1:50-1:500
Wirt: Kaninchen	Vollständiger Name: coiled-coil domain containing 123	
Isotyp: IgG	Berechnete Masse: 783 aa, 90 kDa	
Immunogen Katalognummer: AG21206	Beobachtete Masse: 85 kDa, 40 kDa	

Anwendungen

Geprüfte Anwendungen: IF, WB, ELISA	Positivkontrollen: WB : SH-SY5Y-Zellen, Neuro-2a-Zellen
In Publikationen genannte Anwendungen: IF, WB	IF : U-251-Zellen,
Getestete Reaktivität: Human, Maus	
Zitierte Arten: Human, Maus	

Hintergrundinformationen

CCDC123 (as known as CEP123), also named as CEP89, is a new player in the process of primary ciliogenesis and it also plays a role in mitochondrial metabolism where it may modulate complex IV activity. It has been shown that CEP123 is localized to the distal appendages of the mother centriole and the localization of CEP123 is cell cycle-dependent with its levels decreasing during mitosis. CEP123 depletion can cause defects in ciliary vesicle formation and prevent the formation of a ciliary vesicle at the distal end of the mother centriole. It is possible that CEP123 is involved in regulating the recruitment of membranes to the centrosome through its interaction with Cep290 (PMID:23575228, 23789104, 23348840). 24002-1-AP antibody recognizes all of CEP123 isoforms.

Bemerkenswerte Veröffentlichungen

Verfasser	Pubmed ID	Journal	Anwendung
Pierrick Le Borgne	36070319	PLoS Biol	IF
Min Liu	34480124	Cell Res	WB, IF
Tomoharu Kanie	28625565	Dev Cell	IF

Lagerung

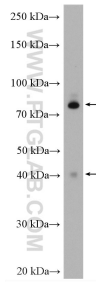
Lagerungsbedingungen:
Bei -20°C lagern. Nach dem Versand ein Jahr lang stabil
Lagerungspuffer:
PBS mit 0.02% Natriumazid und 50% Glycerin pH 7.3.
Aliquotieren ist nicht notwendig bei -20°C Lagerung

*** 20ul-Größen enthalten 0.1% BSA

For technical support and original validation data for this product please contact:
T: 1 (888) 4PTGLAB (1-888-478-4522) (toll free in USA), or 1(312) 455-8498 (outside USA)
E: proteintech@ptglab.com
W: ptglab.com

This product is exclusively available under Proteintech Group brand and is not available to purchase from any other manufacturer.

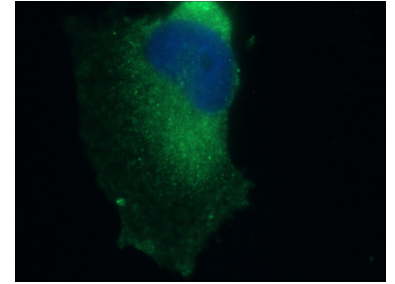
Ausgewählte Validierungsdaten



SH-SY5Y cells were subjected to SDS PAGE followed by western blot with 24002-1-AP (CEP89 antibody) at dilution of 1:300 incubated at room temperature for 1.5 hours.



Neuro-2a cells were subjected to SDS PAGE followed by western blot with 24002-1-AP (CEP89 antibody) at dilution of 1:300 incubated at room temperature for 1.5 hours.



Immunofluorescent analysis of (-20°C Ethanol) fixed U-251 cells using 24002-1-AP (CEP89 antibody) at dilution of 1:50 and Alexa Fluor 488-Conjugated AffiniPure Goat Anti-Rabbit IgG(H+L).