

Nur für Forschungszwecke

CEP120 Polyklonaler Antikörper

Katalog-Nr.:24067-1-AP



Allgemeine Informationen

Katalog-Nr.: 24067-1-AP	GenBank-Zugangsnummer: BC040527	Reinigungsmethode: Antigen-Affinitätsreinigung
Größe: 150ul, Konzentration: 600 µg/ml von Nanodrop;	GeneID (NCBI): 153241	Empfohlene Verdünnungen: WB 1:1000-1:6000 IHC 1:50-1:500 IF 1:50-1:500
Wirt: Kaninchen	Vollständiger Name: centrosomal protein 120kDa	
Isotyp: IgG	Berechnete Masse: 986 aa, 113 kDa	
Immunogen Katalognummer: AG21165	Beobachtete Masse: 120-130 kDa	

Anwendungen

Geprüfte Anwendungen: IF, IHC, WB, ELISA	Positivkontrollen: WB : Jurkat-Zellen, Mauslungengewebe IHC : humanes Pankreasgewebe, IF : HeLa-Zellen,
Getestete Reaktivität: Human, Maus	
Hinweis-IHC: Antigendemaskierung mit TE-Puffer pH 9,0 empfohlen. (*) Wahlweise kann die Antigendemaskierung auch mit Citratpuffer pH 6,0 erfolgen.	

Hintergrundinformationen

CEP120 encodes a protein that functions in the microtubule-dependent coupling of the nucleus and the centrosome. It is involved in regulating centrosome-mediated interkinetic nuclear migration of neural progenitors (PubMed: 27185865, PubMed: 23857771). CEP120, SPICE1 and CPAP are required for centriole elongation and for recruitment of distal microtubule-capping proteins and CEP135 to procentrioles (PubMed: 23810536). Cep120 and Taccs are required for the neural progenitor pool during mouse neocortical development (PubMed: 17920017).

Lagerung

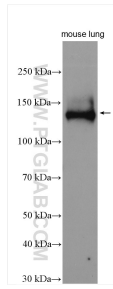
Lagerungsbedingungen:
Bei -20°C lagern. Nach dem Versand ein Jahr lang stabil
Lagerungspuffer:
PBS mit 0.02% Natriumazid und 50% Glycerin pH 7.3.
Aliquotieren ist nicht notwendig bei -20°C Lagerung

*** 20ul-Größen enthalten 0.1% BSA

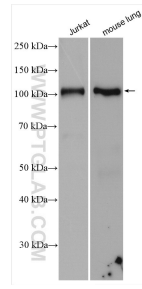
For technical support and original validation data for this product please contact:
T: 1 (888) 4PTGLAB (1-888-478-4522) (toll free in USA), or 1(312) 455-8498 (outside USA)
E: proteintech@ptglab.com
W: ptglab.com

This product is exclusively available under Proteintech Group brand and is not available to purchase from any other manufacturer.

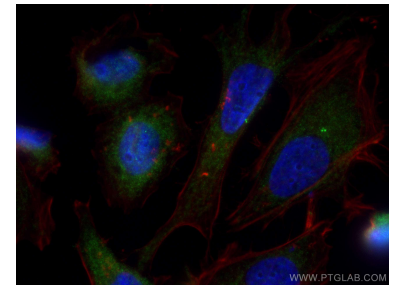
Ausgewählte Validierungsdaten



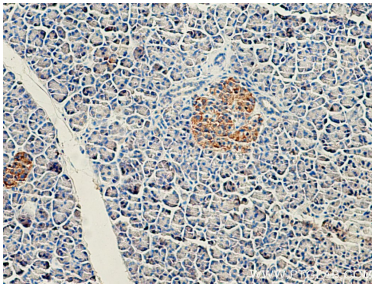
mouse lung tissue were subjected to SDS PAGE followed by western blot with 24067-1-AP (CEP120 antibody) at dilution of 1:1000 incubated at room temperature for 1.5 hours.



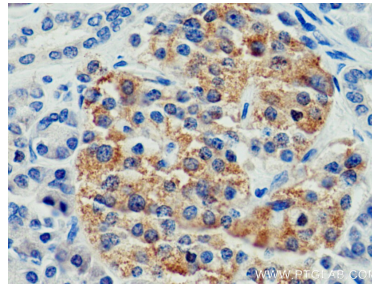
Various lysates were subjected to SDS PAGE followed by western blot with 24067-1-AP (CEP120 antibody) at dilution of 1:3000 incubated at room temperature for 1.5 hours.



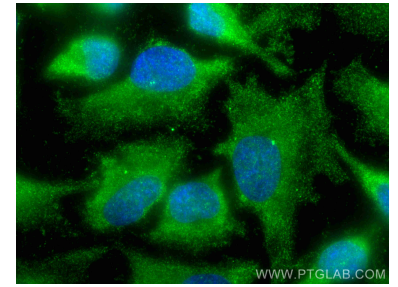
Immunofluorescent analysis of (-20°C Methanol) fixed HeLa cells using CEP120 antibody (24067-1-AP) at dilution of 1:200 and Coralite@488-Conjugated AffiniPure Goat Anti-Rabbit IgG(H+L), Coralite@594 Beta Actin antibody (CL594-66009, Clone: 2D4H5, red).



Immunohistochemical analysis of paraffin-embedded human pancreas tissue slide using 24067-1-AP (CEP120 antibody) at dilution of 1:200 (under 10x lens). Heat mediated antigen retrieval with Tris-EDTA buffer (pH 9.0).



Immunohistochemical analysis of paraffin-embedded human pancreas tissue slide using 24067-1-AP (CEP120 antibody) at dilution of 1:200 (under 40x lens). Heat mediated antigen retrieval with Tris-EDTA buffer (pH 9.0).



Immunofluorescent analysis of (-20°C Methanol) fixed HeLa cells using CEP120 antibody (24067-1-AP) at dilution of 1:200 and Coralite@488-Conjugated AffiniPure Goat Anti-Rabbit IgG(H+L).