

Nur für Forschungszwecke

# SPRED2 Polyklonaler Antikörper

Katalog-Nr.: 24091-1-AP

Vorgestelltes Produkt

4 Publikationen



## Allgemeine Informationen

Katalog-Nr.:  
24091-1-AP

Größe:

150ul, Konzentration: 350 µg/ml von  
Nanodrop und 133 µg/ml durch die  
Bradford-Methode mit BSA als  
Standard;

Wirt:

Kaninchen

Isotyp:

IgG

Immunogen Katalognummer:  
AG21359

GenBank-Zugangsnummer:

BC136334

GeneID (NCBI):

200734

Vollständiger Name:

sprouty-related, EVH1 domain  
containing 2

Berechnete Masse:

418 aa, 48 kDa

Beobachtete Masse:

40-48 kDa

Reinigungsmethode:

Antigen-affinitätsgereinigt

Empfohlene Verdünnungen:

WB 1:1000-1:6000

IHC 1:20-1:200

IF 1:50-1:500

## Anwendungen

Geprüfte Anwendungen:

IF, IHC, WB, ELISA

In Publikationen genannte Anwendungen:

IF, IHC, WB

Getestete Reaktivität:

Human, Maus, Ratte

Zitierte Arten:

Human, Maus

**Hinweis-IHC: Antigendemaskierung mit TE-  
Puffer pH 9,0 empfohlen. (\*) Wahlweise  
kann die Antigendemaskierung auch mit  
Citratpuffer pH 6,0 erfolgen.**

Positivkontrollen:

WB: PC-12-Zellen, Maushirngewebe,  
Maushodengewebe, MCF-7-Zellen, Rattenhirngewebe,  
Rattenhodengewebe, T-47D-Zellen

IHC: humanes Hodengewebe,

IF: HeLa-Zellen,

## Hintergrundinformationen

SPRED2 is a member of the SPRED family of proteins that modulate GFR signaling by inhibiting the Ras-MAPK cascade (PMID: 17094949). SPRED family members are characterized by an N-terminal Enabled/VASP homology 1 domain (EVH1), a central c-Kit binding domain (KBD) and a C-terminal Sprouty-related domain (SPR) (PMID: 17691106). Three mammalian SPREDs (SPRED1-3) have been described. In adult tissues, SPRED2 is expressed ubiquitously, but most highly expressed in glandular epithelia (PMID: 15580519; 17691106). Reduced expression level of SPRED2 has been reported in human hepatocellular carcinoma (HCC), suggesting SPRED2 may play a role in tumorigenesis (PMID: 16652141). Gene disruption of SPRED2 causes dwarfism (PMID: 15946934).

## Bemerkenswerte Veröffentlichungen

Verfasser	Pubmed ID	Journal	Anwendung
Shinsuke Oda	34818323	PLoS One	IHC
Hiroyasu Sakai	35908904	Biol Pharm Bull	WB
Tong Gao	36902429	Int J Mol Sci	WB

## Lagerung

Lagerungsbedingungen:

Bei -20°C lagern. Nach dem Versand ein Jahr lang stabil

Lagerungspuffer:

PBS mit 0.02% Natriumazid und 50% Glycerin pH 7.3.

Aliquotieren ist nicht notwendig bei -20°C Lagerung

\*\*\* 20ul-Größen enthalten 0.1% BSA

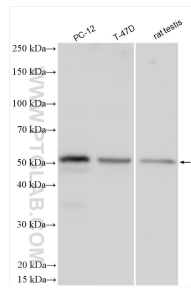
For technical support and original validation data for this product please contact:

T: 1 (888) 4PTGLAB (1-888-478-4522) (toll free  
in USA), or 1(312) 455-8498 (outside USA)

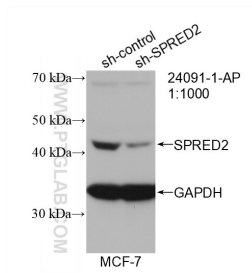
E: proteintech@ptglab.com  
W: ptglab.com

This product is exclusively available under Proteintech  
Group brand and is not available to purchase from any  
other manufacturer.

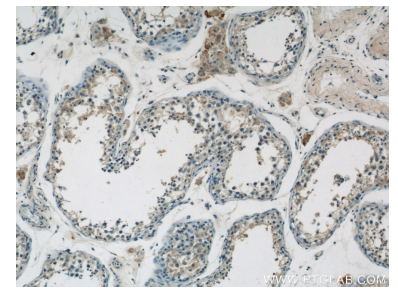
## Ausgewählte Validierungsdaten



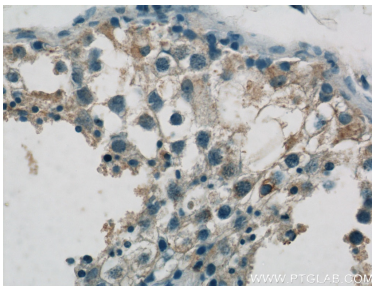
Various lysates were subjected to SDS PAGE followed by western blot with 24091-1-AP (SPRED2 antibody) at dilution of 1:3000 incubated at room temperature for 1.5 hours.



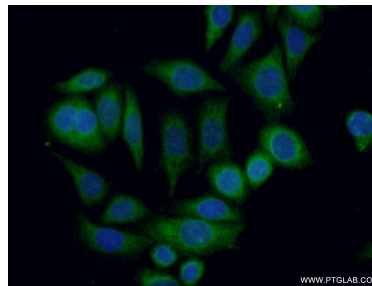
WB result of SPRED2 antibody (24091-1-AP; 1:1000; incubated at room temperature for 1.5 hours) with sh-Control and sh-SPRED2 transfected MCF-7 cells.



Immunohistochemical analysis of paraffin-embedded human testis tissue slide using 24091-1-AP (SPRED2 Antibody) at dilution of 1:50 (under 10x lens).



Immunohistochemical analysis of paraffin-embedded human testis tissue slide using 24091-1-AP (SPRED2 Antibody) at dilution of 1:50 (under 40x lens).



Immunofluorescent analysis of (-20°C Ethanol) fixed HeLa cells using 24091-1-AP (SPRED2 antibody) at dilution of 1:50 and Alexa Fluor 488-conjugated AffiniPure Goat Anti-Rabbit IgG(H+L).