

## Allgemeine Informationen

<b>Katalog-Nr.:</b> 24127-1-AP	<b>GenBank-Zugangsnummer:</b> BC016934	<b>Reinigungsmethode:</b> Antigen-Affinitätsreinigung
<b>Größe:</b> 150ul , Konzentration: 700 µg/ml von Nanodrop;	<b>GeneID (NCBI):</b> 6648	<b>Empfohlene Verdünnungen:</b> WB 1:5000-1:50000 IP 0.5-4.0 ug für IP und 1:500-1:2000 für WB
<b>Wirt:</b> Kaninchen	<b>Vollständiger Name:</b> superoxide dismutase 2, mitochondrial	<b>IHC 1:500-1:2000</b> <b>IF 1:20-1:200</b>
<b>Isotyp:</b> IgG	<b>Berechnete Masse:</b> 25 kDa	
<b>Immunogen Katalognummer:</b> AG21388	<b>Beobachtete Masse:</b> 25 kDa	

## Anwendungen

### Geprüfte Anwendungen:

IF, IHC, IP, WB, ELISA

### In Publikationen genannte Anwendungen:

CoIP, ELISA, IF, IHC, IP, WB

### Getestete Reaktivität:

Human, Maus, Ratte

### Zitierte Arten:

Hausschwein, Huhn, Human, Maus, Ratte, Rind, Ziege

**Hinweis-IHC: Antigendemaskierung mit TE-Puffer pH 9,0 empfohlen. (\*) Wahlweise kann die Antigendemaskierung auch mit Citratpuffer pH 6,0 erfolgen.**

### Positivkontrollen:

**WB:** DU 145-Zellen, HEK-293-Zellen, HeLa-Zellen, Maushirngewebe, Rattenhirngewebe

**IP:** Maushirngewebe,

**IHC:** humanes Leberkarzinomgewebe, humanes Mammakarzinomgewebe

**IF:** HUVEC-Zellen,

## Hintergrundinformationen

SOD2(superoxide dismutase 2, mitochondrial ) is also named as IPOB, MNSOD, SODM, Mn-SOD and belongs to the iron/manganese superoxide dismutase family. It is a marker of mitochondria, which is restricted to the perinuclear area in a cell with aggregate formation of mutant SOD1(PMID:12659845). It functions as the first line of antioxidant defense against highly reactive superoxide radicals and it appears to be early predictors for survival in septic patients with with MIF(PMID:20863520). It has 2 isoforms with the molecular weight of 25 kDa and 21 kDa.

## Bemerkenswerte Veröffentlichungen

Verfasser	Pubmed ID	Journal	Anwendung
Huidong Wang	36249770	Front Pharmacol	IF
Dan Tang	34815154	Phytomedicine	WB
Wen Zhang	31553975	Kidney Blood Press Res	WB

## Lagerung

### Lagerungsbedingungen:

Bei -20°C lagern. Nach dem Versand ein Jahr lang stabil

### Lagerungspuffer:

PBS mit 0.02% Natriumazid und 50% Glycerin pH 7.3.

Aliquotieren ist nicht notwendig bei -20°C Lagerung

\*\*\* 20ul-Größen enthalten 0.1% BSA

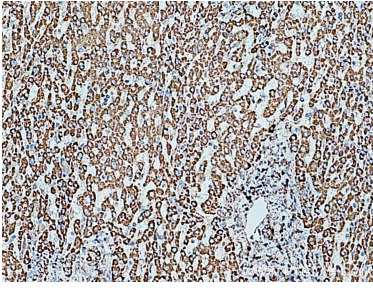
For technical support and original validation data for this product please contact:

T: 1 (888) 4PTGLAB (1-888-478-4522) (toll free in USA), or 1(312) 455-8498 (outside USA)

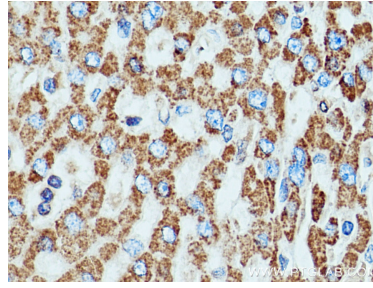
E: [proteintech@ptglab.com](mailto:proteintech@ptglab.com)  
W: [ptglab.com](http://ptglab.com)

This product is exclusively available under Proteintech Group brand and is not available to purchase from any other manufacturer.

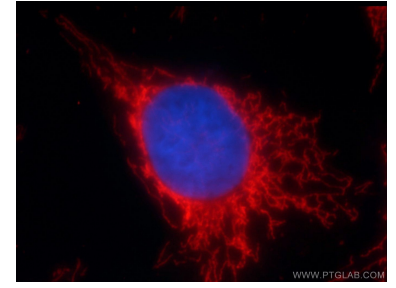
## Ausgewählte Validierungsdaten



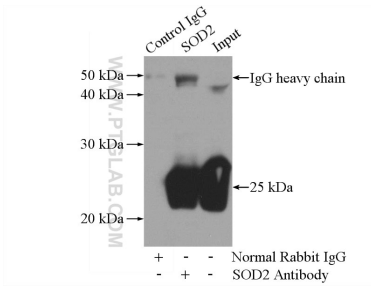
Immunohistochemical analysis of paraffin-embedded human liver cancer tissue slide using 24127-1-AP (SOD2 antibody) at dilution of 1:1000 (under 10x lens). Heat mediated antigen retrieval with Tris-EDTA buffer (pH 9.0).



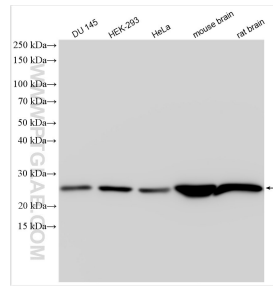
Immunohistochemical analysis of paraffin-embedded human liver cancer tissue slide using 24127-1-AP (SOD2 antibody) at dilution of 1:1000 (under 40x lens). Heat mediated antigen retrieval with Tris-EDTA buffer (pH 9.0).



Immunofluorescent analysis of HUVEC cells using 24127-1-AP (SOD2 antibody) at dilution of 1:50 and Rhodamine-Goat anti-Rabbit IgG.



IP Result of anti-SOD2 (IP:24127-1-AP, 4ug; Detection:24127-1-AP 1:1000) with mouse brain tissue lysate 4000ug.



Various lysates were subjected to SDS PAGE followed by western blot with 24127-1-AP (SOD2 antibody) at dilution of 1:10000 incubated at room temperature for 1.5 hours.