

Nur für Forschungszwecke

ATF6 Polyklonaler Antikörper

Katalog-Nr.: 24169-1-AP

Vorgestelltes Produkt

191 Publikationen



Allgemeine Informationen

Katalog-Nr.: 24169-1-AP	GenBank-Zugangsnummer: BC014969	Reinigungsmethode: Antigen-Affinitätsreinigung
Größe: 150ul, Konzentration: 600 µg/ml von Nanodrop;	GeneID (NCBI): 22926	Empfohlene Verdünnungen: WB 1:2000-1:14000 IP 0.5-4.0 µg für IP und 1:500-1:3000 für WB
Wirt: Kaninchen	Vollständiger Name: activating transcription factor 6	IHC 1:20-1:200 IF 1:10-1:100
Isotyp: IgG	Berechnete Masse: 75 kDa	
Immunogen Katalognummer: AG21456	Beobachtete Masse: 60 kDa, 90-100 kDa	

Anwendungen

Geprüfte Anwendungen:
FC, IF, IHC, IP, WB, ELISA

In Publikationen genannte Anwendungen:
IF, IHC, IP, WB

Getestete Reaktivität:
Human, Maus, Ratte

Zitierte Arten:
Affe, Hausschwein, Huhn, Human, Maus, Ratte

Hinweis-IHC: Antigenmaskierung mit TE-Puffer pH 9,0 empfohlen. (*) Wahlweise kann die Antigenmaskierung auch mit Citratpuffer pH 6,0 erfolgen.

Positivkontrollen:

WB: HeLa-Zellen, HEK-293-Zellen, MCF-7-Zellen

IP: HeLa-Zellen,

IHC: humanes Zervixkarzinomgewebe, humanes Mammaryhyperplasie-Gewebe, humanes Pankreasgewebe, humanes Pankreaskarzinomgewebe

IF: HeLa-Zellen,

Hintergrundinformationen

Activating transcription factor 6 (ATF6) is a transcription factor that acts during endoplasmic reticulum stress by activating unfolded protein response target genes. Binds DNA on the 5'-CCAC[GA]-3' half of the ER stress response element (ERSE) (5'-CCAAT-N(9)-CCAC[GA]-3') and of ERSE II (5'-ATTGG-N-CCACG-3'). Binding to ERSE requires binding of NF- γ to ERSE. Could also be involved in activation of transcription by the serum response factor. During unfolded protein response an approximative 50 kDa fragment containing the cytoplasmic transcription factor domain is released by proteolysis. The cleavage seems to be performed sequentially by site-1 and site-2 proteases. The fully glycosylated form of ATF6, a 670 amino acid protein, exhibits an electrophoretic mobility of ~90 kDa in denaturing SDS-gels, in part because of the glycosylated modifications. ATF6 has 3 consensus sites for N-linked glycosylation and exists constitutively as a glycosylated protein. Differentially glycosylated ATF6 forms may result from mutations or experimental treatment (PMID:15804611) (PMID:14699159). The antibody recognizes cleaved and fully glycosylated forms of ATF6.

Bemerkenswerte Veröffentlichungen

Verfasser	Pubmed ID	Journal	Anwendung
Junxia Hu	31580970	Biomed Pharmacother	WB
Jing Sun	34650437	Front Pharmacol	WB
Yingchao Gong	34582847	Eur J Pharmacol	WB

Lagerung

Lagerungsbedingungen:

Bei -20°C lagern. Nach dem Versand ein Jahr lang stabil

Lagerungspuffer:

PBS mit 0.02% Natriumazid und 50% Glycerin pH 7.3.

Aliquotieren ist nicht notwendig bei -20°C Lagerung

***** 20ul-Größen enthalten 0.1% BSA**

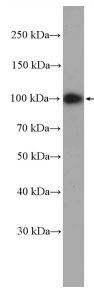
For technical support and original validation data for this product please contact:

T: 1 (888) 4PTGLAB (1-888-478-4522) (toll free in USA), or 1(312) 455-8498 (outside USA)

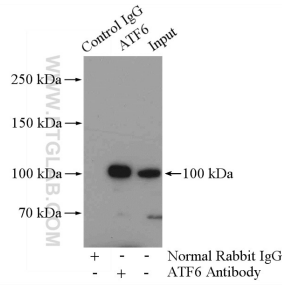
E: proteintech@ptglab.com
W: ptglab.com

This product is exclusively available under Proteintech Group brand and is not available to purchase from any other manufacturer.

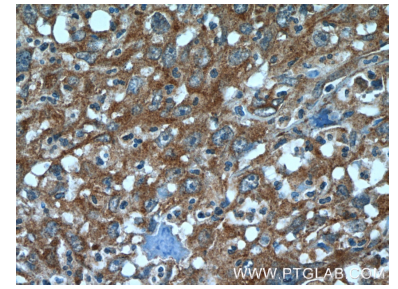
Ausgewählte Validierungsdaten



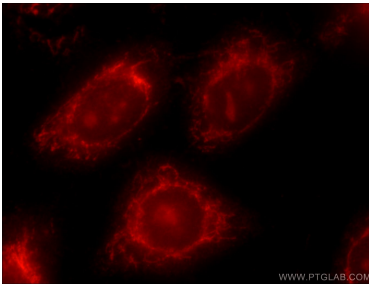
HeLa cells were subjected to SDS PAGE followed by western blot with 24169-1-AP (ATF6 Antibody) at dilution of 1:300 incubated at room temperature for 1.5 hours.



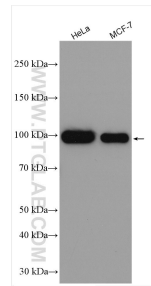
IP Result of anti-ATF6 (IP:24169-1-AP, 4ug; Detection:24169-1-AP 1:1500) with HeLa cells lysate 2800ug.



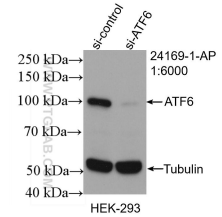
Immunohistochemical analysis of paraffin-embedded human cervical cancer tissue slide using 24169-1-AP (ATF6 Antibody) at dilution of 1:50 (under 40x lens).



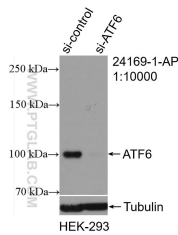
Immunofluorescent analysis of HeLa cells using 24169-1-AP (ATF6 antibody) at dilution of 1:25 and Rhodamine-Goat anti-Rabbit IgG.



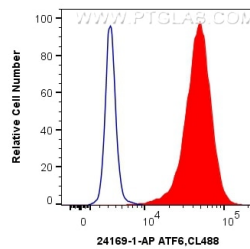
Various lysates were subjected to SDS PAGE followed by western blot with 24169-1-AP (ATF6 antibody) at dilution of 1:7000 incubated at room temperature for 1.5 hours.



WB result of ATF6 antibody (24169-1-AP; 1:6000; incubated at room temperature for 1.5 hours) with sh-Control and sh-ATF6 transfected HEK-293 cells.



WB result of ATF6 antibody (24169-1-AP; 1:10000; incubated at room temperature for 1.5 hours) with sh-Control and sh-ATF6 transfected HEK-293 cells.



1×10^6 HeLa cells were intracellularly stained with 0.4 ug Anti-Human ATF6 (24169-1-AP) and CoraLite®488-Conjugated AffiniPure Goat Anti-Rabbit IgG(H+L) at dilution 1:1000 (red), or 0.4 ug Control Antibody. Cells were fixed with 4% PFA and permeabilized with Intracellular Staining Permeabilization Wash Buffer.