

Nur für Forschungszwecke

LUC7L2 Polyklonaler Antikörper

Katalog-Nr.: 24202-1-AP

Vorgestelltes Produkt



Allgemeine Informationen

Katalog-Nr.:

24202-1-AP

Größe:

150ul, Konzentration: 600 µg/ml von Nanodrop und 347 µg/ml durch die Bradford-Methode mit BSA als Standard;

Wirt:

Kaninchen

Isotyp:

IgG

Immunogen Katalognummer:

AG21135

GenBank-Zugangsnummer:

BC017163

GeneID (NCBI):

51631

Vollständiger Name:

LUC7-like 2 (*S. cerevisiae*)

Berechnete Masse:

392 aa, 47 kDa

Beobachtete Masse:

46 kDa

Reinigungsmethode:

Antigen-affinitätsgereinigt

Empfohlene Verdünnungen:

WB 1:500-1:3000

IF 1:50-1:500

Anwendungen

Geprüfte Anwendungen:

IF, WB, ELISA

Getestete Reaktivität:

Human

Positivkontrollen:

WB : K-562-Zellen, HeLa-Zellen

IF : HeLa-Zellen,

Hintergrundinformationen

RNA-binding protein LUC7L2 as a negative regulator of DNA virus-triggered innate immune response. Mechanistically, LUC7L2 directly bound to intron 3 of MITA precursor messenger RNA, inhibited its splicing and promoted its nonsense-mediated decay, leading to its downregulation at protein level (PMID:34155193). Moreover, LUC7L2 as a component of the U1 snRNP capable of reprogramming cellular metabolism through changes in alternative pre-mRNA splicing (PMID:33961773).

Lagerung

Lagerungsbedingungen:

Bei -20°C lagern. Nach dem Versand ein Jahr lang stabil

Lagerungspuffer:

PBS mit 0.02% Natriumazid und 50% Glycerin pH 7.3.

Aliquotieren ist nicht notwendig bei -20°C Lagerung

*** 20ul-Größen enthalten 0.1% BSA

For technical support and original validation data for this product please contact:

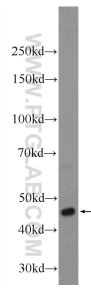
T: 1 (888) 4PTGLAB (1-888-478-4522) (toll free in USA), or 1(312) 455-8498 (outside USA)

E: proteintech@ptglab.com

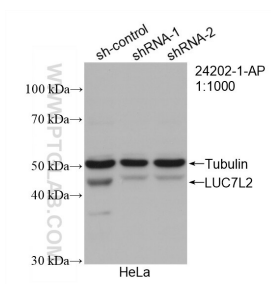
W: ptglab.com

This product is exclusively available under Proteintech Group brand and is not available to purchase from any other manufacturer.

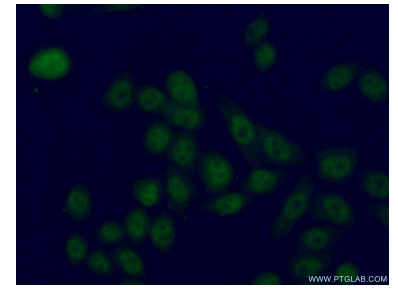
Ausgewählte Validierungsdaten



K-562 cells were subjected to SDS PAGE followed by western blot with 24202-1-AP (LUC7L2 Antibody) at dilution of 1:1500 incubated at room temperature for 1.5 hours.



WB result of LUC7L2 antibody (24202-1-AP; 1:1000; incubated at room temperature for 1.5 hours) with sh-Control and sh-LUC7L2 transfected HeLa cells.



Immunofluorescent analysis of (4% PFA) fixed HeLa cells using 24202-1-AP (LUC7L2 antibody) at dilution of 1:50 and Alexa Fluor 488-conjugated AffiniPure Goat Anti-Rabbit IgG(H+L).