

Nur für Forschungszwecke

# TAF15 Polyklonaler Antikörper

Katalog-Nr.: 24235-1-AP

1 Publikationen



## Allgemeine Informationen

<b>Katalog-Nr.:</b> 24235-1-AP	<b>GenBank-Zugangsnummer:</b> BC046099	<b>Reinigungsmethode:</b> Antigen-affinitätsgereinigt
<b>Größe:</b> 150ul, Konzentration: 800 µg/ml von Nanodrop;	<b>GeneID (NCBI):</b> 8148	<b>Empfohlene Verdünnungen:</b> WB 1:500-1:2000 IHC 1:20-1:200 IF 1:20-1:200
<b>Wirt:</b> Kaninchen	<b>Vollständiger Name:</b> TAF15 RNA polymerase II, TATA box binding protein (TBP)-associated factor, 68kDa	
<b>Isotyp:</b> IgG	<b>Berechnete Masse:</b> 592 aa, 62 kDa	
<b>Immunogen Katalognummer:</b> AG20828	<b>Beobachtete Masse:</b> 68 kDa	

## Anwendungen

<b>Geprüfte Anwendungen:</b> IF, IHC, WB, ELISA	<b>Positivkontrollen:</b> WB : HEK-293-Zellen, IHC : humanes Hodengewebe, humanes Nierengewebe IF : HEK-293-Zellen,
<b>In Publikationen genannte Anwendungen:</b> RIP, WB	
<b>Getestete Reaktivität:</b> Human	
<b>Zitierte Arten:</b> Human	
<b>Hinweis-IHC: Antigendemaskierung mit TE-Puffer pH 9,0 empfohlen. (*) Wahlweise kann die Antigendemaskierung auch mit Citratpuffer pH 6,0 erfolgen.</b>	

## Hintergrundinformationen

TAF15 (TAF2N or TAFII68) is a nuclear protein known to associate with a distinct subpopulation of transcription factor IID (TFIID), a multi-subunit complex that nucleates the pre-initiation complex on promoters of protein-coding genes. TAF15 harbors a transcriptional activation domain, a RNA recognition motif and many Arg-Gly-Gly repeats that participate in RNA binding. TAF15 along with FUS and EWS constitutes the FET (FUS/EWS/TAF15) protein family of heterogeneous nuclear ribonucleoproteins (hnRNPs) class of RNA binding proteins that are multifunctional proteins implicated in numerous aspects of RNA processing/functions. TAF15 is a nuclear protein that shuttle between cytoplasm-nucleus and as RNA/ssDNA-binding protein, it play specific roles during transcription initiation at distinct promoters and enter the preinitiation complex together with the RNA polymerase II. TAF15 as well as other FET member genes are frequently translocated in sarcomas and rare hematopoietic as well as epithelial cancers. Moreover, dominant mutations in genes coding for four hnRNPs (TDP-43, FUS/TLS, TAF15, and EWS) are found in familial and sporadic cases of ALS and a chromosomal aberration involving TAF15/TAF2N is found in a form of extraskeletal myxoid chondrosarcomas (EMC).

## Bemerkenswerte Veröffentlichungen

Verfasser	Pubmed ID	Journal	Anwendung
Dalu Wang	34868956	Front Oncol	WB, RIP

## Lagerung

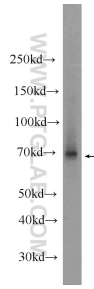
**Lagerungsbedingungen:**  
Bei -20°C lagern. Nach dem Versand ein Jahr lang stabil  
**Lagerungspuffer:**  
PBS mit 0.02% Natriumazid und 50% Glycerin pH 7.3.  
Aliquotieren ist nicht notwendig bei -20°C Lagerung

\*\*\* 20ul-Größen enthalten 0.1% BSA

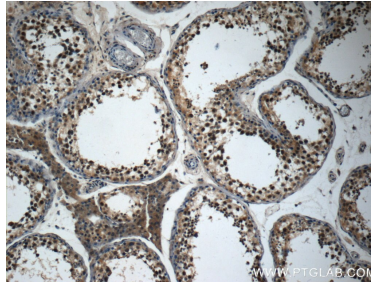
For technical support and original validation data for this product please contact:  
T: 1 (888) 4PTGLAB (1-888-478-4522) (toll free in USA), or 1(312) 455-8498 (outside USA)  
E: proteintech@ptglab.com  
W: ptglab.com

This product is exclusively available under Proteintech Group brand and is not available to purchase from any other manufacturer.

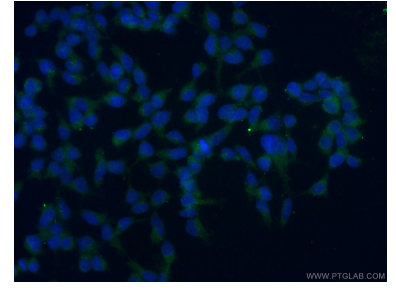
## Ausgewählte Validierungsdaten



HEK-293 cells were subjected to SDS PAGE followed by western blot with 24235-1-AP (TAF15 Antibody) at dilution of 1:1000 incubated at room temperature for 1.5 hours.



Immunohistochemical analysis of paraffin-embedded human testis slide using 24235-1-AP (TAF15 Antibody) at dilution of 1:50.



Immunofluorescent analysis of (-20°C Ethanol) fixed HEK-293 cells using 24235-1-AP (TAF15 antibody) at dilution of 1:50 and Alexa Fluor 488-conjugated AffiniPure Goat Anti-Rabbit IgG(H+L).