

Allgemeine Informationen

Katalog-Nr.:

24282-1-AP

Größe:

150ul, Konzentration: 550 µg/ml von Nanodrop und 293 µg/ml durch die Bradford-Methode mit BSA als Standard;

Wirt:

Kaninchen

Isotyp:

IgG

Immunogen Katalognummer:

AG14900

GenBank-Zugangsnummer:

BC031576

GeneID (NCBI):

23219

Vollständiger Name:

F-box protein 28

Berechnete Masse:

368 aa, 41 kDa

Beobachtete Masse:

42 kDa

Reinigungsmethode:

Antigen-Affinitätsreinigung

Empfohlene Verdünnungen:

WB 1:500-1:2000

IHC 1:20-1:200

Anwendungen

Geprüfte Anwendungen:

IHC, WB, ELISA

Getestete Reaktivität:

Human

Hinweis-IHC: Antigendemaskierung mit TE-Puffer pH 9,0 empfohlen. (*) Wahlweise kann die Antigendemaskierung auch mit Citratpuffer pH 6,0 erfolgen.

Positivkontrollen:

WB: HEK-293T-Zellen, HeLa-Zellen, PC-3-Zellen

IHC: humanes Nierengewebe, humanes Mammakarzinomgewebe

Hintergrundinformationen

FBXO28 also named as F box only protein 28 is a 368 amino-acid protein, which contain 1 F-box domain and belongs to F-box protein family. FBXO28 is a critical component of SCF (Skp1-CUL1-F-box protein) type E3 ubiquitin ligase complex and are involved in substrate recognition and recruitment for ubiquitination. FBXO28 encodes a cell cycle regulated protein with a critical function in tumor cell proliferation. FBXO28 assembles an SCF-FBXO28 ubiquitin ligase whose activity is required during progression through the cell cycle by cyclin-dependent kinase 1/2 mediated phosphorylation. FBXO28 expression and phosphorylation to be strongly associated with poor prognosis and worse overall survival in human breast cancer.

Lagerung

Lagerungsbedingungen:

Bei -20°C lagern. Nach dem Versand ein Jahr lang stabil

Lagerungspuffer:

PBS mit 0.02% Natriumazid und 50% Glycerin pH 7.3.

Aliquotieren ist nicht notwendig bei -20°C Lagerung

*** 20ul-Größen enthalten 0.1% BSA

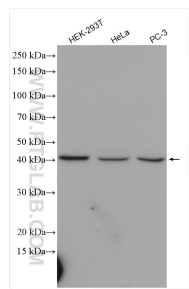
For technical support and original validation data for this product please contact:

T: 1 (888) 4PTGLAB (1-888-478-4522) (toll free in USA), or 1(312) 455-8498 (outside USA)

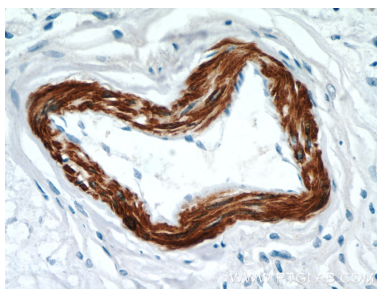
E: proteintech@ptglab.com
W: ptglab.com

This product is exclusively available under Proteintech Group brand and is not available to purchase from any other manufacturer.

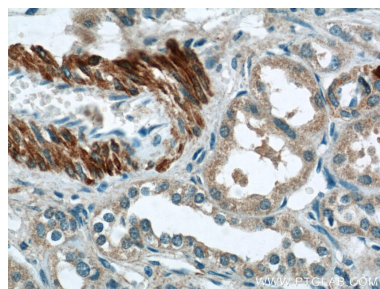
Ausgewählte Validierungsdaten



Various lysates were subjected to SDS PAGE followed by western blot with 24282-1-AP (FBXO28 antibody) at dilution of 1:1000 incubated at room temperature for 1.5 hours.



Immunohistochemical analysis of paraffin-embedded human breast cancer tissue slide using 24282-1-AP (FBXO28 Antibody) at dilution of 1:50 (under 40x lens).



Immunohistochemical analysis of paraffin-embedded human kidney tissue slide using 24282-1-AP (FBXO28 Antibody) at dilution of 1:50 (under 40x lens).