

Nur für Forschungszwecke

Sodium iodide symporter Polyklonaler Antikörper



Katalog-Nr.: 24324-1-AP

36 Publikationen

Allgemeine Informationen

Katalog-Nr.:
24324-1-AP

Größe:
150ul, Konzentration: 1200 µg/ml von 6528
Nanodrop und 767 µg/ml durch die
Bradford-Methode mit BSA als
Standard;

Wirt:
Kaninchen

Isotyp:
IgG

Immunogen Katalognummer:
AG19504

GenBank-Zugangsnummer:
BC105047

GeneID (NCBI):
6528
Vollständiger Name:
solute carrier family 5 (sodium iodide
symporter), member 5

Berechnete Masse:
643 aa, 69 kDa

Beobachtete Masse:
50-55 kDa, 75-100 kDa

Reinigungsmethode:
Antigen-Affinitätsreinigung

Empfohlene Verdünnungen:
WB 1:500-1:1000
IP 0.5-4.0 µg für IP und 1:500-1:1000
für WB
IHC 1:20-1:200

Anwendungen

Geprüfte Anwendungen:
FC, IHC, IP, WB, ELISA

In Publikationen genannte Anwendungen:
ChIP, FC, IF, IHC, IP, WB

Getestete Reaktivität:
Human, Maus, Ratte

Zitierte Arten:
Human, Maus, Ratte

**Hinweis-IHC: Antigendemaskierung mit TE-
Puffer pH 9,0 empfohlen. (*) Wahlweise
kann die Antigendemaskierung auch mit
Citratpuffer pH 6,0 erfolgen.**

Positivkontrollen:

WB: Maushodengewebe, Maus-Magengewebe, SGC-
7901-Zellen

IP: Maushodengewebe,

IHC: humanes Schilddrüsenkarzinomgewebe,
humanes Eierstockgewebe

Hintergrundinformationen

The sodium iodide symporter (Na⁺/I⁻ symporter, NIS), encoded by SLC5A5, is an integral plasma membrane glycoprotein that plays an important role in iodide uptake by thyroid cells. Expression of sodium iodide symporter has also been found in extra-thyroidal tissues, including gastric mucosa, lactating mammary gland and salivary glands. Increased expression of sodium iodide symporter has been found in thyroid tissue from patients with Graves' disease as well as papillary thyroid carcinomas. In addition, sodium iodide symporter was found to express in majority of breast cancer tissue but not in normal tissue. Sodium iodide symporter can be a promising diagnostic and therapeutic tool for thyroid cancer and breast cancer. This antibody recognizes the mature approximately 75-100 kDa protein and a partially glycosylated 50-55 kDa protein. (PMID: 12588808, 9525971)

Bemerkenswerte Veröffentlichungen

Verfasser	Pubmed ID	Journal	Anwendung
Jun Wang	32940055	Hum Gene Ther	IF
Martin L Read	34520744	Cell Chem Biol	WB
Jianlu Song	30323976	Am J Cancer Res	WB

Lagerung

Lagerungsbedingungen:

Bei -20°C lagern. Nach dem Versand ein Jahr lang stabil

Lagerungspuffer:

PBS mit 0.02% Natriumazid und 50% Glycerin pH 7.3.

Aliquotieren ist nicht notwendig bei -20°C Lagerung

*** 20ul-Größen enthalten 0.1% BSA

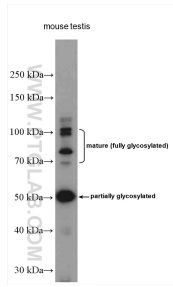
For technical support and original validation data for this product please contact:

T: 1 (888) 4PTGLAB (1-888-478-4522) (toll free
in USA), or 1(312) 455-8498 (outside USA)

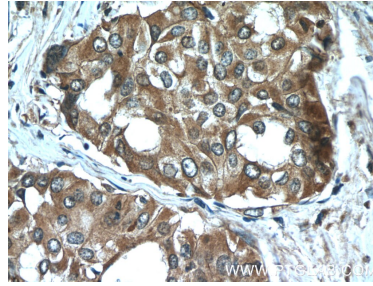
E: proteintech@ptglab.com
W: ptglab.com

This product is exclusively available under Proteintech
Group brand and is not available to purchase from any
other manufacturer.

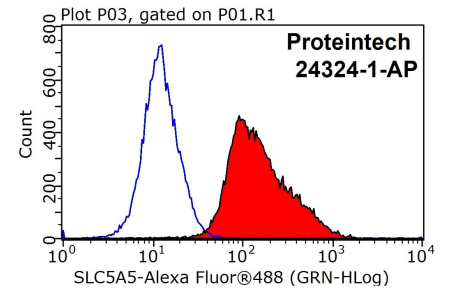
Ausgewählte Validierungsdaten



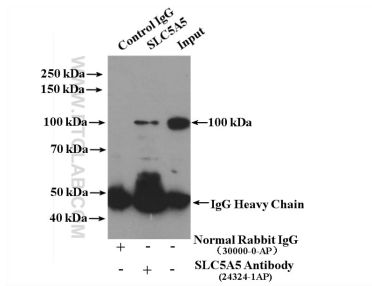
mouse testis tissue were subjected to SDS PAGE followed by western blot with 24324-1-AP (Sodium iodide symporter antibody at dilution of 1:600 incubated at room temperature for 1.5 hours.



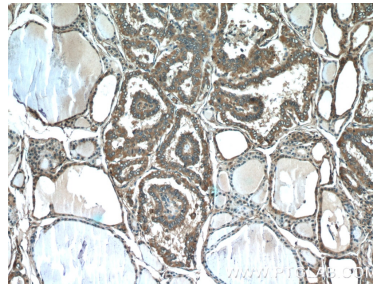
Immunohistochemical analysis of paraffin-embedded human thyroid cancer tissue slide using 24324-1-AP (Sodium iodide symporter antibody at dilution of 1:50 (under 40x lens).



1X10⁶ MCF-7 cells were stained with 0.2ug Sodium iodide symporter antibody (24324-1-AP, red) and control antibody (blue). Fixed with 90% MeOH blocked with 3% BSA (30 min). Alexa Fluor 488-conjugated AffiniPure Goat Anti-Rabbit IgG(H+L) with dilution 1:100.



IP Result of anti-Sodium iodide symporter (IP:24324-1-AP, 4ug; Detection:24324-1-AP 1:500) with mouse testis tissue lysate 4000ug.



Immunohistochemical analysis of paraffin-embedded human thyroid cancer tissue slide using 24324-1-AP (Sodium iodide symporter antibody at dilution of 1:50 (under 10x lens).