

Nur für Forschungszwecke

# MLK4 Polyklonaler Antikörper

Katalog-Nr.: 24395-1-AP



## Allgemeine Informationen

<b>Katalog-Nr.:</b> 24395-1-AP	<b>GenBank-Zugangsnummer:</b> BC136649	<b>Reinigungsmethode:</b> Antigen-Affinitätsreinigung
<b>Größe:</b> 150ul, Konzentration: 400 µg/ml von Nanodrop und 247 µg/ml durch die Bradford-Methode mit BSA als Standard;	<b>GeneID (NCBI):</b> 84451	<b>Empfohlene Verdünnungen:</b> WB 1:500-1:2000 IF 1:10-1:100
<b>Wirt:</b> Kaninchen	<b>Vollständiger Name:</b> mixed lineage kinase 4	
<b>Isotyp:</b> IgG	<b>Berechnete Masse:</b> 1036 aa, 114 kDa	
<b>Immunogen Katalognummer:</b> AG18904	<b>Beobachtete Masse:</b> 53 kDa	

## Anwendungen

<b>Geprüfte Anwendungen:</b> IF, WB, ELISA	<b>Positivkontrollen:</b> WB: HeLa-Zellen, IF: C6-Zellen,
<b>Getestete Reaktivität:</b> Human, Maus, Ratte	

## Hintergrundinformationen

MLK4 belongs to the MAP kinase kinase kinase subfamily. The MLK family members are characterized by the presence of signature sequences of Ser/Thr and Tyr kinases within their catalytic domain. The MLK1-4 contains an aminoterminal Src-Homology (SH3) domain, followed by the kinase domain, a leucine-zipper region, and a Cdc42/Rac-interactive binding (CRIB) motif. MLK4 expressed in two splicing variants, MLK4 $\alpha$  and MLK4 $\beta$ . The difference of these two isoforms is located in their C-terminal portion. The negative effect of MLK4 on LPS-induced ERK and JNK activation could be very important in controlling the level of cytokine expression, and thus maintaining the balance of inflammatory responses. (PMID:21602844). This protein has 3 isoforms produced by alternative splicing with the molecular weight of 63 kDa, 113 kDa, 53 kDa.

## Lagerung

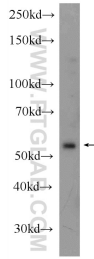
**Lagerungsbedingungen:**  
Bei -20°C lagern. Nach dem Versand ein Jahr lang stabil  
**Lagerungspuffer:**  
PBS mit 0.02% Natriumazid und 50% Glycerin pH 7.3.  
Aliquotieren ist nicht notwendig bei -20°C Lagerung

\*\*\* 20ul-Größen enthalten 0.1% BSA

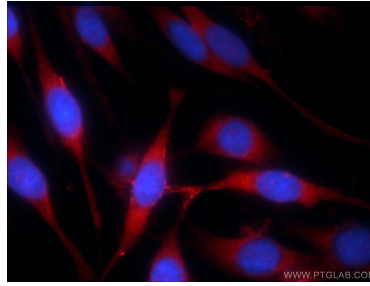
For technical support and original validation data for this product please contact:  
T: 1 (888) 4PTGLAB (1-888-478-4522) (toll free in USA), or 1(312) 455-8498 (outside USA)  
E: proteintech@ptglab.com  
W: ptglab.com

This product is exclusively available under Proteintech Group brand and is not available to purchase from any other manufacturer.

## Ausgewählte Validierungsdaten



HeLa cells were subjected to SDS PAGE followed by western blot with 24395-1-AP (MLK4 antibody) at dilution of 1:1000 incubated at room temperature for 1.5 hours.



Immunofluorescent analysis of C6 cells using 24395-1-AP (MLK4 antibody) at dilution of 1:25 and Rhodamine-Goat anti-Rabbit IgG.