

Allgemeine Informationen

Katalog-Nr.:

24418-1-AP

Größe:

150ul, Konzentration: 550 µg/ml von Nanodrop und 313 µg/ml durch die Bradford-Methode mit BSA als Standard;

Wirt:

Kaninchen

Isotyp:

IgG

Immunogen Katalognummer:

AG19550

GenBank-Zugangsnummer:

BC130617

GeneID (NCBI):

1103

Vollständiger Name:

choline acetyltransferase

Berechnete Masse:

748 aa, 83 kDa

Beobachtete Masse:

60-66 kDa, 45 kDa

Reinigungsmethode:

Antigen-Affinitätsreinigung

Empfohlene Verdünnungen:

WB 1:500-1:2000
IP 0.5-4.0 µg für IP und 1:200-1:1000 für WB
IHC 1:50-1:500
IF 1:50-1:500

Anwendungen

Geprüfte Anwendungen:

IF, IHC, IP, WB, ELISA

In Publikationen genannte Anwendungen:

IF

Getestete Reaktivität:

Human, Maus, Ratte

Zitierte Arten:

Maus

Hinweis-IHC: Antigendemaskierung mit TE-Puffer pH 9,0 empfohlen. (*) Wahlweise kann die Antigendemaskierung auch mit Citratpuffer pH 6,0 erfolgen.

Positivkontrollen:

WB: Rattenhirngewebe, humanes Plazenta-Gewebe, Maushirngewebe

IP: Rattenhirngewebe,

IHC: Rattenhirngewebe, Maushirngewebe

IF: Maushirngewebe,

Hintergrundinformationen

CHAT (choline acetyltransferase) belongs to the carnitine/choline acetyltransferase family. It catalyzes the reversible synthesis of acetylcholine (ACh) from acetyl CoA and choline at cholinergic synapses. Defects in CHAT are the cause of congenital myasthenic syndrome with episodic apnea (CMSEA). CHAT is known to be present exclusively in the cytoplasm of cholinergic neurons and anti-CHAT antibody has been considered as the best marker for cholinergic neurons. It has been observed that CHAT gene generates multiple mRNA splice variants, including peripheral type CHAT (pCHAT) and common type CHAT (cCHAT), encoding 40-55 kDa and 66-70 kDa forms of proteins, respectively.

Bemerkenswerte Veröffentlichungen

Verfasser	Pubmed ID	Journal	Anwendung
Katarzyna Bilinska	33880469	bioRxiv	IF

Lagerung

Lagerungsbedingungen:

Bei -20°C lagern. Nach dem Versand ein Jahr lang stabil

Lagerungspuffer:

PBS mit 0.02% Natriumazid und 50% Glycerin pH 7.3.

Aliquotieren ist nicht notwendig bei -20°C Lagerung

***** 20ul-Größen enthalten 0.1% BSA**

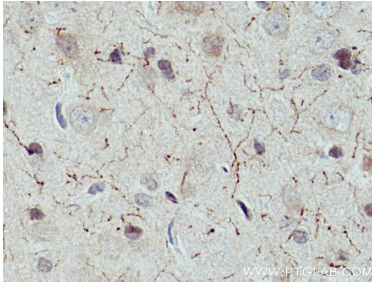
For technical support and original validation data for this product please contact:

T: 1 (888) 4PTGLAB (1-888-478-4522) (toll free in USA), or 1(312) 455-8498 (outside USA)

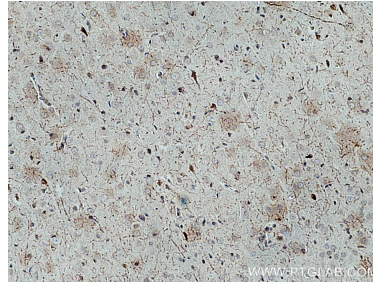
E: proteintech@ptglab.com
W: ptglab.com

This product is exclusively available under Proteintech Group brand and is not available to purchase from any other manufacturer.

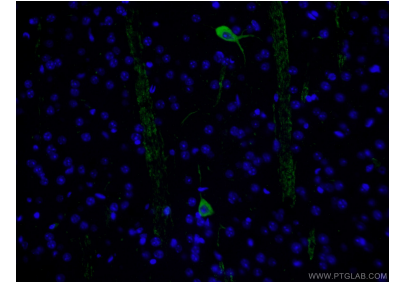
Ausgewählte Validierungsdaten



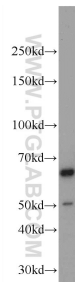
Immunohistochemical analysis of paraffin-embedded rat brain tissue slide using 24418-1-AP (CHAT antibody) at dilution of 1:200 (under 40x lens). Heat mediated antigen retrieval with Tris-EDTA buffer (pH 9.0).



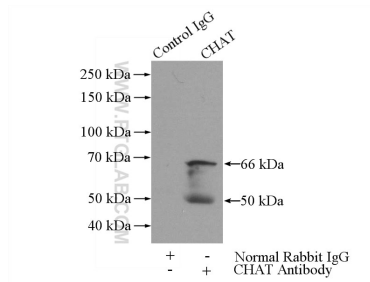
Immunohistochemical analysis of paraffin-embedded rat brain tissue slide using 24418-1-AP (CHAT antibody) at dilution of 1:200 (under 10x lens). Heat mediated antigen retrieval with Tris-EDTA buffer (pH 9.0).



Immunofluorescent analysis of (4% PFA) fixed mouse brain tissue using 24418-1-AP (CHAT antibody) at dilution of 1:50 and Alexa Fluor 488-conjugated AffiniPure Goat Anti-Rabbit IgG(H+L).



rat brain tissue were subjected to SDS PAGE followed by western blot with 24418-1-AP (CHAT Antibody) at dilution of 1:1000 incubated at room temperature for 1.5 hours.



IP Result of anti-CHAT (IP:24418-1-AP, 4ug; Detection:24418-1-AP 1:300) with rat brain tissue lysate 4000ug.