

Nur für Forschungszwecke

# BRIP1(N-terminal) Polyklonaler Antikörper



Katalog-Nr.:24436-1-AP

Vorgestelltes Produkt

1 Publikationen

## Allgemeine Informationen

<b>Katalog-Nr.:</b> 24436-1-AP	<b>GenBank-Zugangsnummer:</b> BC101472	<b>Reinigungsmethode:</b> Antigen-Affinitätsreinigung
<b>Größe:</b> 150ul , Konzentration: 1000 µg/ml von83990 Nanodrop und 467 µg/ml durch die Bradford-Methode mit BSA als Standard;	<b>GeneID (NCBI):</b> Vollständiger Name: BRCA1 interacting protein C-terminal helicase 1	<b>Empfohlene Verdünnungen:</b> WB 1:500-1:2000 IHC 1:50-1:500 IF 1:50-1:500
<b>Wirt:</b> Kaninchen	<b>Berechnete Masse:</b> 1249 aa, 141 kDa	
<b>Isotyp:</b> IgG	<b>Beobachtete Masse:</b> 140-150 kDa	
<b>Immunogen Katalognummer:</b> AG19907		

## Anwendungen

<b>Geprüfte Anwendungen:</b> IF, IHC, WB, ELISA	<b>Positivkontrollen:</b> WB : HeLa-Zellen, MCF-7-Zellen IHC : humanes Mammakarzinomgewebe, IF : HeLa-Zellen,
<b>In Publikationen genannte Anwendungen:</b> WB	
<b>Getestete Reaktivität:</b> Human, Maus	
<b>Zitierte Arten:</b> Human	
<b>Hinweis-IHC: Antigendemaskierung mit TE-Puffer pH 9,0 empfohlen. (*) Wahlweise kann die Antigendemaskierung auch mit Citratpuffer pH 6,0 erfolgen.</b>	

## Hintergrundinformationen

BRIP1 also named as BACH1, FANCI or ATP dependent RNA helicase BRIP1 is a 1249 amino acid protein, which contains one helicase ATP-binding domain and belongs to the DEAD box helicase family, DEAH subfamily. BRIP1 contains nuclear localization signal and is ubiquitously expressed with highest levels in testis, an expression pattern similar to that of BRCA1. BRIP1 is required to resolve the secondary structures of guanine-rich DNA that occasionally form during lagging-strand DNA synthesis.

## Bemerkenswerte Veröffentlichungen

Verfasser	Pubmed ID	Journal	Anwendung
Jiao Zhao	35597237	Mol Cell	WB

## Lagerung

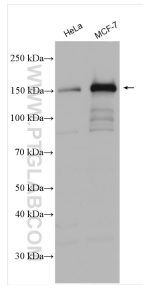
**Lagerungsbedingungen:**  
Bei -20°C lagern. Nach dem Versand ein Jahr lang stabil  
**Lagerungspuffer:**  
PBS mit 0.02% Natriumazid und 50% Glycerin pH 7.3.  
Aliquotieren ist nicht notwendig bei -20°C Lagerung

\*\*\* 20ul-Größen enthalten 0.1% BSA

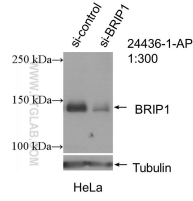
For technical support and original validation data for this product please contact:  
T: 1 (888) 4PTGLAB (1-888-478-4522) (toll free in USA), or 1(312) 455-8498 (outside USA)  
E: proteintech@ptglab.com  
W: ptglab.com

This product is exclusively available under Proteintech Group brand and is not available to purchase from any other manufacturer.

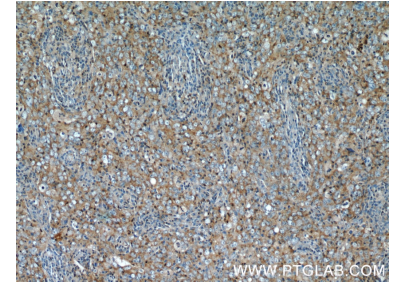
## Ausgewählte Validierungsdaten



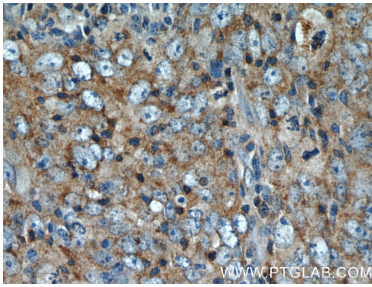
Various lysates were subjected to SDS PAGE followed by western blot with 24436-1-AP (BRIP1(N-terminal) antibody) at dilution of 1:1000 incubated at room temperature for 1.5 hours.



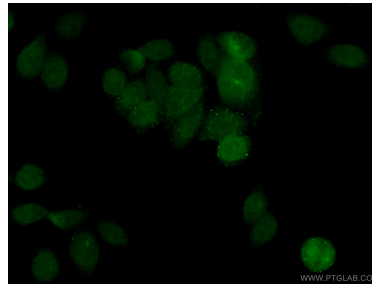
WB result of BRIP1(N-terminal) antibody (24436-1-AP; 1:300; incubated at room temperature for 1.5 hours) with sh-Control and sh-BRIP1(N-terminal) transfected HeLa cells.



Immunohistochemical analysis of paraffin-embedded human breast cancer tissue slide using 24436-1-AP (BRIP1 Antibody) at dilution of 1:50 (under 10x lens).



Immunohistochemical analysis of paraffin-embedded human breast cancer tissue slide using 24436-1-AP (BRIP1 Antibody) at dilution of 1:50 (under 40x lens).



Immunofluorescent analysis of (4% PFA) fixed HeLa cells using 24436-1-AP (BRIP1(N-terminal) antibody) at dilution of 1:50 and CoraLite488-Conjugated AffiniPure Goat Anti-Rabbit IgG(H+L).