

Allgemeine Informationen

Katalog-Nr.: 24529-1-AP	GenBank-Zugangsnummer: BC051321	Reinigungsmethode: Antigen-Affinitätsreinigung
Größe: 150ul, Konzentration: 750 µg/ml von Nanodrop und 360 µg/ml durch die Bradford-Methode mit BSA als Standard;	GeneID (NCBI): 10855	Empfohlene Verdünnungen: WB 1:500-1:2000 IHC 1:20-1:200 IF 1:10-1:100
Wirt: Kaninchen	Vollständiger Name: heparanase	
Isotyp: IgG	Berechnete Masse: 543 aa, 61 kDa	
Immunogen Katalognummer: AG21479	Beobachtete Masse: 60 kDa	

Anwendungen

Geprüfte Anwendungen: IF, IHC, WB, ELISA	Positivkontrollen: WB : Jurkat-Zellen,
In Publikationen genannte Anwendungen: IHC, WB	IHC : humanes Leberkarzinomgewebe, humanes Plazenta-Gewebe
Getestete Reaktivität: Human, Maus	IF : HeLa-Zellen, HepG2-Zellen
Zitierte Arten: Human, Maus, Ratte	

Hinweis-IHC: Antigenmaskierung mit TE-Puffer pH 9,0 empfohlen. (*) Wahlweise kann die Antigenmaskierung auch mit Citratpuffer pH 6,0 erfolgen.

Hintergrundinformationen

HPSE(Heparanase) is also named as HEP, HPA, HPA1, HPR1, HPSE1, HSE1 and belongs to the glycosyl hydrolase 79 family. It is a endoglycosidase that cleaves heparan sulfate proteoglycans (HSPGs) into heparan sulfate side chains and core proteoglycans. HPSE is essential in the disassembly of the extracellular matrix (ECM) by invading cells. It has 3 isoforms produced by alternative splicing with the molecular weight of 61 kDa, 55 kDa and 53 kDa. The full length protein has six glycosylation sites. The cleavage of the 65 kDa form leads to the generation of a linker peptide, and 8 kDa and 50 kDa products. The active form, the 8/50 kDa heterodimer, is resistant to degradation and glycosylation of the 50 kDa subunit appears to be essential for its solubility.

Bemerkenswerte Veröffentlichungen

Verfasser	Pubmed ID	Journal	Anwendung
X Wang	25321193	Br J Cancer	
Guang Xu	28081450	Diabetes Res Clin Pract	WB
Yawei Li	28794202	EMBO Rep	WB,IHC

Lagerung

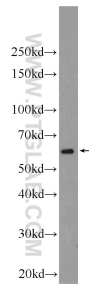
Lagerungsbedingungen:
Bei -20°C lagern. Nach dem Versand ein Jahr lang stabil
Lagerungspuffer:
PBS mit 0.02% Natriumazid und 50% Glycerin pH 7.3.
 Aliquotieren ist nicht notwendig bei -20°C Lagerung

*** 20ul-Größen enthalten 0.1% BSA

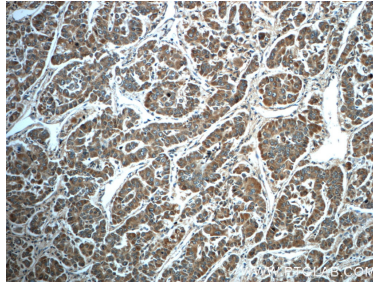
For technical support and original validation data for this product please contact:
 T: 1 (888) 4PTGLAB (1-888-478-4522) (toll free in USA), or 1(312) 455-8498 (outside USA)
 E: proteintech@ptglab.com
 W: ptglab.com

This product is exclusively available under Proteintech Group brand and is not available to purchase from any other manufacturer.

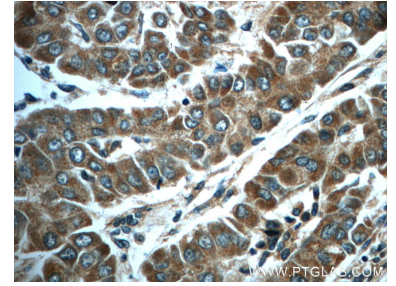
Ausgewählte Validierungsdaten



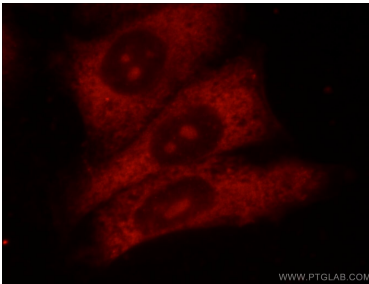
Jurkat cells were subjected to SDS PAGE followed by western blot with 24529-1-AP (HPSE Antibody) at dilution of 1:1000 incubated at room temperature for 1.5 hours.



Immunohistochemical analysis of paraffin-embedded human liver cancer slide using 24529-1-AP (HPSE Antibody) at dilution of 1:50.



Immunohistochemical analysis of paraffin-embedded human liver cancer slide using 24529-1-AP (HPSE Antibody) at dilution of 1:50.



Immunofluorescent analysis of HeLa cells using 24529-1-AP (HPSE antibody) at dilution of 1:25 and Rhodamine-Goat anti-Rabbit IgG.