

Nur für Forschungszwecke

SLC37A1 Polyklonaler Antikörper

Katalog-Nr.: 24582-1-AP



Allgemeine Informationen

Katalog-Nr.:
24582-1-AP

Größe:
150ul, Konzentration: 500 µg/ml von Nanodrop und 313 µg/ml durch die Bradford-Methode mit BSA als Standard;

Wirt:
Kaninchen

Isotyp:
IgG

Immunogen Katalognummer:
AG20180

GenBank-Zugangsnummer:
BC152997

GeneID (NCBI):
54020

Vollständiger Name:
solute carrier family 37 (glycerol-3-phosphate transporter), member 1

Berechnete Masse:
533 aa, 58 kDa

Beobachtete Masse:
60-66 kDa

Reinigungsmethode:

Antigen-Affinitätsreinigung

Empfohlene Verdünnungen:

WB 1:500-1:1000

IF 1:10-1:100

Anwendungen

Geprüfte Anwendungen:

IF, WB, ELISA

Getestete Reaktivität:

Human, Maus, Ratte

Positivkontrollen:

WB: Mausnierengewebe, MCF-7-Zellen, Rattennierengewebe

IF: MCF-7-Zellen,

Hintergrundinformationen

SLC37A1 (also known as SPX1) is one of the SLC37 family members, localized in the endoplasmic reticulum (ER) membrane (PMID:29719821). The SLC37A1 protein also shares 30% sequence identity to GlpT, suggesting that SLC37A1 could be a mammalian glycerol-3-phosphate transporter. The SLC37A1 gene is widely expressed, with the highest transcript levels in adult kidney, bone marrow, intestine, spleen, and liver (PMID:24745989). In addition, the SLC37A1 protein shares 59% homology to SLC37A2, 35% homology to SLC37A3, and 22% homology to SLC37A4 (PMID:23506893). SLC37A1 is a 533 amino-acid protein with a calculated molecular weight of 58 kDa and observed molecular weight 60-66kDa.

Lagerung

Lagerungsbedingungen:

Bei -20°C lagern. Nach dem Versand ein Jahr lang stabil

Lagerungspuffer:

PBS mit 0.02% Natriumazid und 50% Glycerin pH 7.3.

Aliquotieren ist nicht notwendig bei -20°C Lagerung

***** 20ul-Größen enthalten 0.1% BSA**

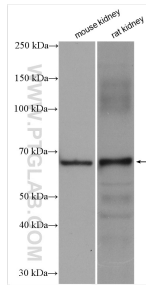
For technical support and original validation data for this product please contact:

T: 1 (888) 4PTGLAB (1-888-478-4522) (toll free in USA), or 1(312) 455-8498 (outside USA)

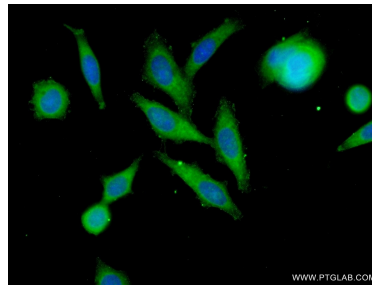
E: proteintech@ptglab.com
W: ptglab.com

This product is exclusively available under Proteintech Group brand and is not available to purchase from any other manufacturer.

Ausgewählte Validierungsdaten



mouse kidney tissue were subjected to SDS PAGE followed by western blot with 24582-1-AP (SLC37A1 antibody) at dilution of 1:500 incubated at room temperature for 1.5 hours.



Immunofluorescent analysis of (-20°C Ethanol) fixed MCF-7 cells using 24582-1-AP (SLC37A1 antibody) at dilution of 1:25 and Alexa Fluor 488-conjugated AffiniPure Goat Anti-Rabbit IgG(H+L).