

Allgemeine Informationen

Katalog-Nr.: 24655-1-AP	GenBank-Zugangsnummer: BC067895	Reinigungsmethode: Antigen-Affinitätsreinigung
Größe: 150ul , Konzentration: 1200 µg/ml von10011 Nanodrop und 513 µg/ml durch die Bradford-Methode mit BSA als Standard;	GeneID (NCBI): 10011	Empfohlene Verdünnungen: WB 1:2000-1:10000 IHC 1:20-1:200 IF 1:50-1:500
Wirt: Kaninchen	Vollständiger Name: steroid receptor RNA activator 1	
Isotyp: IgG	Berechnete Masse: 26 kDa	
Immunogen Katalognummer: AG20082	Beobachtete Masse: 30 kDa, 33 kDa	

Anwendungen

Geprüfte Anwendungen: FC, IF, IHC, WB, ELISA	Positivkontrollen: WB : A2780-Zellen, HEK-293-Zellen
In Publikationen genannte Anwendungen: IHC, WB	IHC : humanes Mammakarzinomgewebe, Maushodengewebe
Getestete Reaktivität: Human	IF : MCF-7-Zellen,
Zitierte Arten: Human, Maus	

Hinweis-IHC: Antigenmaskierung mit TE-Puffer pH 9,0 empfohlen. (*) Wahlweise kann die Antigenmaskierung auch mit Citratpuffer pH 6,0 erfolgen.

Hintergrundinformationen

Steroid receptor RNA activator 1 (SRA1), also known as steroid receptor RNA activator protein (SRAP) or SRA, is involved in modulating the activity of multiple transcription factors including the estrogen receptor (ER) (PMID: 20398657). It may play a role in tumorigenesis (PMID: 16152589). The SRA1 gene encodes both SRA1 protein and a non-coding functional RNA that functions as part of a ribonucleoprotein complex activating steroid receptor induced transcription. This polyclonal antibody recognizes endogenous SRA1 isoforms which migrate as a doublet on SDS-PAGE gels (PMID: 12565891; 23907597).

Bemerkenswerte Veröffentlichungen

Verfasser	Pubmed ID	Journal	Anwendung
Wenchao Li,	33242606	Free Radic Biol Med	WB
Xin-Nong Chen	33945857	J Ethnopharmacol	WB
Junhan Zhou	35424752	RSC Adv	WB,IHC

Lagerung

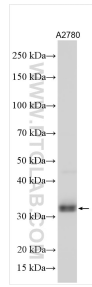
Lagerungsbedingungen:
Bei -20°C lagern. Nach dem Versand ein Jahr lang stabil
Lagerungspuffer:
PBS mit 0.02% Natriumazid und 50% Glycerin pH 7.3.
Aliquotieren ist nicht notwendig bei -20°C Lagerung

*** 20ul-Größen enthalten 0.1% BSA

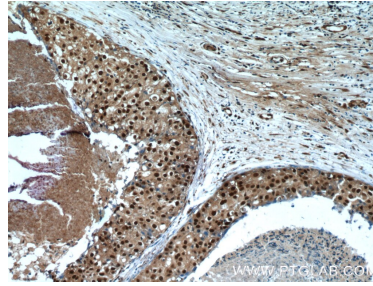
For technical support and original validation data for this product please contact:
T: 1 (888) 4PTGLAB (1-888-478-4522) (toll free in USA), or 1(312) 455-8498 (outside USA)
E: proteintech@ptglab.com
W: ptglab.com

This product is exclusively available under Proteintech Group brand and is not available to purchase from any other manufacturer.

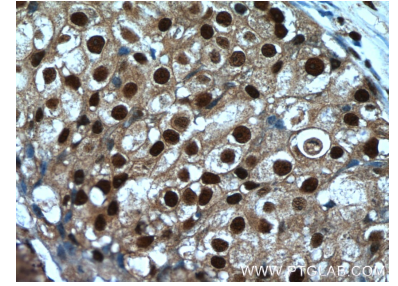
Ausgewählte Validierungsdaten



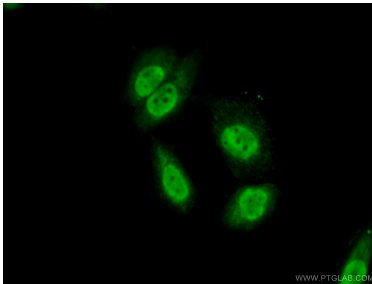
A2780 cells were subjected to SDS PAGE followed by western blot with 24655-1-AP (SRA1 antibody) at dilution of 1:5000 incubated at room temperature for 1.5 hours.



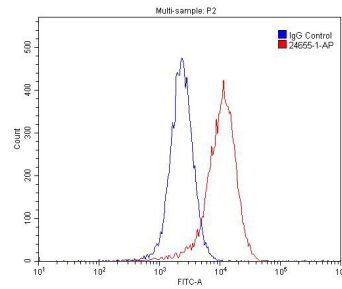
Immunohistochemical analysis of paraffin-embedded human breast cancer tissue slide using 24655-1-AP (SRA1 Antibody) at dilution of 1:50 (under 10x lens).



Immunohistochemical analysis of paraffin-embedded human breast cancer tissue slide using 24655-1-AP (SRA1 Antibody) at dilution of 1:50 (under 40x lens).



Immunofluorescent analysis of (10% Formaldehyde) fixed MCF-7 cells using 24655-1-AP (SRA1 antibody) at dilution of 1:50 and Alexa Fluor 488-conjugated AffiniPure Goat Anti-Rabbit IgG(H+L).



1×10^6 MCF-7 cells were stained with 0.2 μ g SRA1 antibody (24655-1-AP, red) and control antibody (blue). Cells were fixed with 4% PFA and permeabilized with 0.1% Triton X-100. Alexa Fluor 488-conjugated AffiniPure Goat Anti-Rabbit IgG(H+L) with dilution 1:1500.