

Nur für Forschungszwecke

# FAM172A Polyklonaler Antikörper

Katalog-Nr.:24732-1-AP



## Allgemeine Informationen

<b>Katalog-Nr.:</b> 24732-1-AP	<b>GenBank-Zugangsnummer:</b> BC020584	<b>Reinigungsmethode:</b> Antigen-Affinitätsreinigung
<b>Größe:</b> 150ul , Konzentration: 700 µg/ml von Nanodrop;	<b>GeneID (NCBI):</b> 83989	<b>Empfohlene Verdünnungen:</b> WB 1:1000-1:6000 IHC 1:50-1:500
<b>Wirt:</b> Kaninchen	<b>Vollständiger Name:</b> family with sequence similarity 172, member A	
<b>Isotyp:</b> IgG	<b>Berechnete Masse:</b> 416 aa, 48 kDa	
<b>Immunogen Katalognummer:</b> AG20437	<b>Beobachtete Masse:</b> 50-55 kDa	

## Anwendungen

### Geprüfte Anwendungen:

IHC, WB, ELISA

### Getestete Reaktivität:

Human, Maus, Ratte

**Hinweis-IHC: Antigendemaskierung mit TE-Puffer pH 9,0 empfohlen. (\*) Wahlweise kann die Antigendemaskierung auch mit Citratpuffer pH 6,0 erfolgen.**

### Positivkontrollen:

WB : Maus-Kolongewebe, Ratten-Kolongewebe

IHC : humanes Lebergewebe,

## Hintergrundinformationen

Family with sequence similarity 172 member A (FAM172A), cloned from human aortic tissues, is subsequently observed in human endothelial and vascular smooth muscle cells, and macrophages. As the imbalance of the cell cycle and apoptosis is closely related to the key characteristics of malignant tumors, FAM172A dysregulation is a potential contributing factor in cell transformation. Recently, FAM172A has been reported to take part in the development of several cancers, such as human liver, colorectal and papillary thyroid cancers. Moreover, FAM172A was upregulated by high glucose in a concentration- and time-dependent manner which indicated that FAM172A may be involved in the pathogenesis of diabetic related diseases. FAM172A has 4 isoforms with the molecular mass of 34-36, 43 and 48 kDa. This antibody was detected at 50-55 kDa on SDS-PAGE. (PMID: 31988090, 26637224)

## Lagerung

### Lagerungsbedingungen:

Bei -20°C lagern. Nach dem Versand ein Jahr lang stabil

### Lagerungspuffer:

PBS mit 0.02% Natriumazid und 50% Glycerin pH 7.3.

Aliquotieren ist nicht notwendig bei -20°C Lagerung

\*\*\* 20ul-Größen enthalten 0.1% BSA

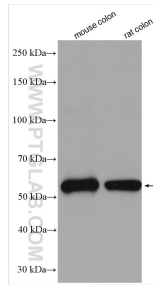
For technical support and original validation data for this product please contact:

T: 1 (888) 4PTGLAB (1-888-478-4522) (toll free in USA), or 1(312) 455-8498 (outside USA)

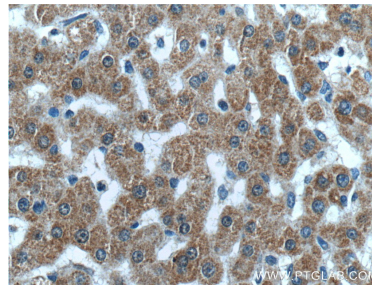
E: proteintech@ptglab.com  
W: ptglab.com

This product is exclusively available under Proteintech Group brand and is not available to purchase from any other manufacturer.

## Ausgewählte Validierungsdaten



Various lysates were subjected to SDS PAGE followed by western blot with 24732-1-AP (FAM172A antibody) at dilution of 1:3000 incubated at room temperature for 1.5 hours.



Immunohistochemical analysis of paraffin-embedded human liver tissue slide using 24732-1-AP (FAM172A Antibody) at dilution of 1:200 (under 40x lens).