

Nur für Forschungszwecke

YTHDF2 Polyklonaler Antikörper

Katalog-Nr.: 24744-1-AP

Vorgestelltes Produkt

195 Publikationen



Allgemeine Informationen

Katalog-Nr.:

24744-1-AP

Größe:

150ul, Konzentration: 500 µg/ml von Nanodrop;

Wirt:

Kaninchen

Isotyp:

IgG

Immunogen Katalognummer:

AG5922

GenBank-Zugangsnummer:

BC002559

GeneID (NCBI):

51441

Vollständiger Name:

YTH domain family, member 2

Berechnete Masse:

62 kDa

Beobachtete Masse:

62 kDa

Reinigungsmethode:

Antigen-Affinitätsreinigung

Empfohlene Verdünnungen:

WB 1:2000-1:12000

IP 0.5-4.0 µg für IP und 1:500-1:1000

für WB

IF 1:50-1:500

Anwendungen

Geprüfte Anwendungen:

IF, IP, WB, ELISA

In Publikationen genannte Anwendungen:

ChIP, CLIP, CoIP, FC, IF, IHC, IP, RIP, WB

Getestete Reaktivität:

Human, Maus, Ratte

Zitierte Arten:

Affe, Hausschwein, Huhn, Human, Maus, Ratte

Positivkontrollen:

WB: HEK-293-Zellen, C6-Zellen, HeLa-Zellen, Jurkat-Zellen, MOLT-4-Zellen, NIH/3T3-Zellen, Raji-Zellen

IP: Jurkat-Zellen,

IF: Maushirngewebe, HeLa-Zellen, U2OS-Zellen

Hintergrundinformationen

YTHDF2 also named as CLL associated antigen KW 14 or HGRG8 is a 579 amino acid protein, which contains one YTH domain and exists as two alternatively spliced isoforms. YTHDF2 is expressed in in pancreas, testis and placenta. YTHDF2 may play a role in human longevity.

Bemerkenswerte Veröffentlichungen

Verfasser	Pubmed ID	Journal	Anwendung
Menghui Xu	36290677	Antioxidants (Basel)	WB
Fanpeng Zhao	34593014	Mol Neurodegener	WB
Kusuma Suphakhong	36183833	J Biol Chem	WB

Lagerung

Lagerungsbedingungen:

Bei -20°C lagern. Nach dem Versand ein Jahr lang stabil

Lagerungspuffer:

PBS mit 0.02% Natriumazid und 50% Glycerin pH 7.3.

Aliquotieren ist nicht notwendig bei -20°C Lagerung

*** 20ul-Größen enthalten 0.1% BSA

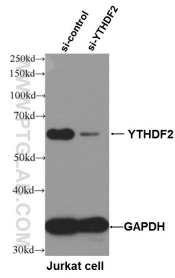
For technical support and original validation data for this product please contact:

T: 1 (888) 4PTGLAB (1-888-478-4522) (toll free in USA), or 1(312) 455-8498 (outside USA)

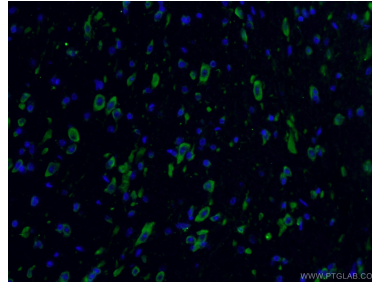
E: proteintech@ptglab.com
W: ptglab.com

This product is exclusively available under Proteintech Group brand and is not available to purchase from any other manufacturer.

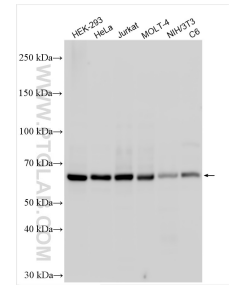
Ausgewählte Validierungsdaten



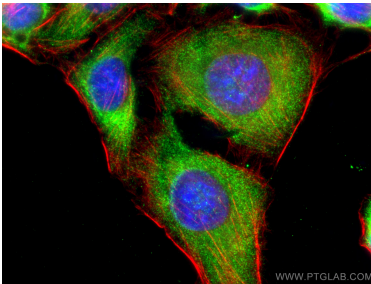
WB result of YTHDF2 antibody (24744-1-AP, 1:4000) with si-control and si-YTHDF2 transfected Jurkat cells.



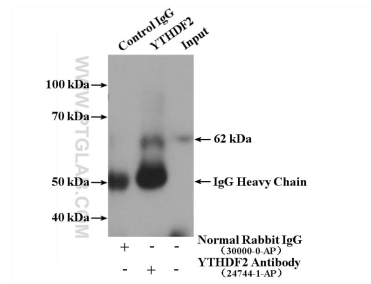
Immunofluorescent analysis of (4% PFA) fixed mouse brain tissue using 24744-1-AP (YTHDF2 antibody) at dilution of 1:50 and Alexa Fluor 488-conjugated AffiniPure Goat Anti-Rabbit IgG(H+L).



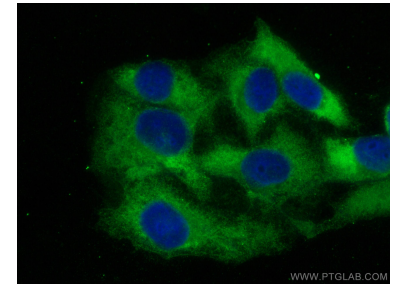
Various lysates were subjected to SDS PAGE followed by western blot with 24744-1-AP (YTHDF2 antibody) at dilution of 1:6000 incubated at room temperature for 1.5 hours.



Immunofluorescent analysis of (-20°C Ethanol) fixed U2OS cells using YTHDF2 antibody (24744-1-AP) at dilution of 1:200 and CoraLite®488-Conjugated AffiniPure Goat Anti-Rabbit IgG(H+L), CL594-Phalloidin (red).



IP Result of anti-YTHDF2 (IP:24744-1-AP, 4ug; Detection:24744-1-AP 1:600) with Jurkat cells lysate 2000ug.



Immunofluorescent analysis of (-20°C Ethanol) fixed U2OS cells using YTHDF2 antibody (24744-1-AP) at dilution of 1:400 and CoraLite®488-Conjugated AffiniPure Goat Anti-Rabbit IgG(H+L).