

Nur für Forschungszwecke

KLHL31 Polyklonaler Antikörper

Katalog-Nr.: 24781-1-AP

Vorgestelltes Produkt



Allgemeine Informationen

Katalog-Nr.:
24781-1-AP

Größe:
150ul, Konzentration: 800 µg/ml von
Nanodrop und 407 µg/ml durch die
Bradford-Methode mit BSA als
Standard;

Wirt:
Kaninchen

Isotyp:
IgG

Immunogen Katalognummer:
AG20462

GenBank-Zugangsnummer:
BC137267

GeneID (NCBI):
401265

Vollständiger Name:
kelch-like 31 (Drosophila)

Berechnete Masse:
634 aa, 70 kDa

Beobachtete Masse:
60-70 kDa

Reinigungsmethode:

Antigen-Affinitätsreinigung

Empfohlene Verdünnungen:

WB 1:500-1:2000

IHC 1:50-1:500

IF 1:20-1:200

Anwendungen

Geprüfte Anwendungen:

IF, IHC, WB, ELISA

Getestete Reaktivität:

Human, Maus

Hinweis-IHC: Antigenmaskierung mit TE-Puffer pH 9,0 empfohlen. (*) Wahlweise kann die Antigenmaskierung auch mit Citratpuffer pH 6,0 erfolgen.

Positivkontrollen:

WB: Mausembryogewebe, Jurkat-Zellen

IHC: Maus-Skelettmuskelgewebe, humanes Kolonkarzinomgewebe

IF: HepG2-Zellen,

Hintergrundinformationen

KLHL31 also named as BKLHD6, KBTBD1, or Kelch like protein 31 is a 634 amino acid protein, which contains one 1 BACK domain, one BTB domain and six Kelch repeats. KLHL31 as a transcription repressor in MAPK/JNK signaling pathway to regulate cellular functions. KLHL31 is strongly expressed in skeletal muscle and weakly in heart.

Lagerung

Lagerungsbedingungen:

Bei -20°C lagern. Nach dem Versand ein Jahr lang stabil

Lagerungspuffer:

PBS mit 0.02% Natriumazid und 50% Glycerin pH 7.3.

Aliquotieren ist nicht notwendig bei -20°C Lagerung

*** 20ul-Größen enthalten 0.1% BSA

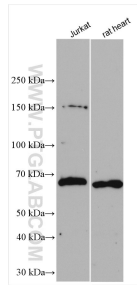
For technical support and original validation data for this product please contact:

T: 1 (888) 4PTGLAB (1-888-478-4522) (toll free
in USA), or 1(312) 455-8498 (outside USA)

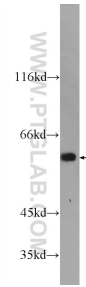
E: proteintech@ptglab.com
W: ptglab.com

This product is exclusively available under Proteintech Group brand and is not available to purchase from any other manufacturer.

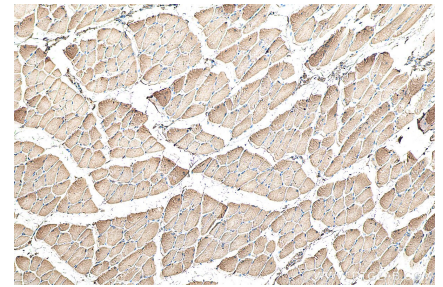
Ausgewählte Validierungsdaten



Various lysates were subjected to SDS PAGE followed by western blot with 24781-1-AP (KLHL31 antibody) at dilution of 1:2000 incubated at room temperature for 1.5 hours.



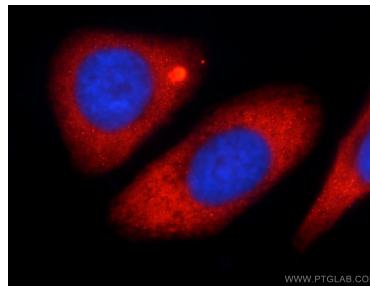
mouse embryo tissue were subjected to SDS PAGE followed by western blot with 24781-1-AP (KLHL31 Antibody) at dilution of 1:1000 incubated at room temperature for 1.5 hours.



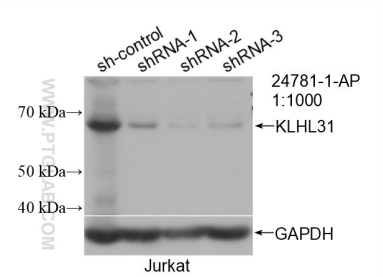
Immunohistochemical analysis of paraffin-embedded mouse skeletal muscle tissue slide using 24781-1-AP (KLHL31 antibody) at dilution of 1:200 (under 10x lens). Heat mediated antigen retrieval with Tris-EDTA buffer (pH 9.0).



Immunohistochemical analysis of paraffin-embedded mouse skeletal muscle tissue slide using 24781-1-AP (KLHL31 antibody) at dilution of 1:200 (under 40x lens). Heat mediated antigen retrieval with Tris-EDTA buffer (pH 9.0).



Immunofluorescent analysis of HepG2 cells using 24781-1-AP (KLHL31 antibody) at dilution of 1:50 and Rhodamine-Goat anti-Rabbit IgG.



WB result of KLHL31 antibody (24781-1-AP; 1:1000; incubated at room temperature for 1.5 hours) with sh-Control and sh-KLHL31 transfected Jurkat cells.