

Nur für Forschungszwecke

# LALBA Polyklonaler Antikörper

Katalog-Nr.:24871-1-AP



## Allgemeine Informationen

Katalog-Nr.:  
24871-1-AP

Größe:  
150ul , Konzentration: 350 µg/ml von  
Nanodrop und 267 µg/ml durch die  
Bradford-Methode mit BSA als  
Standard;

Wirt:  
Kaninchen

Isotyp:  
IgG

Immunogen Katalognummer:  
AG21630

GenBank-Zugangsnummer:  
BC112316

GeneID (NCBI):  
3906

Vollständiger Name:  
lactalbumin, alpha-

Berechnete Masse:  
142 aa, 16 kDa

Beobachtete Masse:  
13-16 kDa

Reinigungsmethode:

Antigen-Affinitätsreinigung

Empfohlene Verdünnungen:

WB 1:1000-1:4000

## Anwendungen

Geprüfte Anwendungen:

WB,ELISA

Getestete Reaktivität:

Human

Positivkontrollen:

WB : human milk, human saliva

## Hintergrundinformationen

LALBA encodes alpha-lactalbumin which is secreted calcium metalloprotein, a principal protein of milk. As a monomer, LALBA strongly binds calcium and zinc ions and may possess bactericidal or antitumor activity. LALBA also could form a complex with the the beta 1,4-galactosyltransferase to produce the enzyme lactose synthase, participating in the biosynthesis of lactose. Moreover, these proteins enable lactose synthase to produce lactose by transferring galactose moieties to glucose. Studies have demonstrated that LALBA-null transgenic mice showed lacking lactose in the milk and inadequate for feeding the pups (PMID:26304038; PMID:12216958).

## Lagerung

Lagerungsbedingungen:

Bei -20°C lagern. Nach dem Versand ein Jahr lang stabil

Lagerungspuffer:

PBS mit 0.02% Natriumazid und 50% Glycerin pH 7.3.

Aliquotieren ist nicht notwendig bei -20°C Lagerung

\*\*\* 20ul-Größen enthalten 0.1% BSA

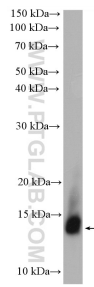
For technical support and original validation data for this product please contact:

T: 1 (888) 4PTGLAB (1-888-478-4522) (toll free  
in USA), or 1(312) 455-8498 (outside USA)

E: proteintech@ptglab.com  
W: ptglab.com

This product is exclusively available under Proteintech Group brand and is not available to purchase from any other manufacturer.

## Ausgewählte Validierungsdaten



human saliva were subjected to SDS PAGE followed by western blot with 24871-1-AP (LALBA antibody) at dilution of 1:600 incubated at room temperature for 1.5 hours.



human milk lysates were subjected to SDS PAGE followed by western blot with 24871-1-AP (LALBA antibody) at dilution of 1:2000 incubated at room temperature for 1.5 hours.