

Allgemeine Informationen

Katalog-Nr.:
24898-1-AP

Größe:
150ul , Konzentration: 400 µg/ml von
Nanodrop und 207 µg/ml durch die
Bradford-Methode mit BSA als
Standard;

Wirt:
Kaninchen

Isotyp:
IgG

Immunogen Katalognummer:
AG18974

GenBank-Zugangsnummer:
BC005210

GeneID (NCBI):
54929

Vollständiger Name:
transmembrane protein 161A

Berechnete Masse:
479 aa, 54 kDa

Beobachtete Masse:
56 kDa

Reinigungsmethode:

Antigen-Affinitätsreinigung

Empfohlene Verdünnungen:

WB 1:500-1:2000

IHC 1:50-1:500

Anwendungen

Geprüfte Anwendungen:

IHC, WB,ELISA

Getestete Reaktivität:

Human, Maus

**Hinweis-IHC: Antigendemaskierung mit TE-
Puffer pH 9,0 empfohlen. (*) Wahlweise
kann die Antigendemaskierung auch mit
Citratpuffer pH 6,0 erfolgen.**

Positivkontrollen:

WB : MCF-7-Zellen, HEK-293-Zellen

IHC : Maushirngewebe, humanes Hirngewebe

Hintergrundinformationen

TMEM161A also named as transmembrane protein 161A is a 479 amino-acid protein, which belongs to TMEM161 family. The molecular weight of TMEM161A is 56 kDa. TMEM161A is multi-pass membrane protein and localizes on the cell membrane. It may involve in the negative regulation of intrinsic apoptotic signaling pathway in response to DNA damage and cellular response to oxidative stress.

Lagerung

Lagerungsbedingungen:

Bei -20°C lagern. Nach dem Versand ein Jahr lang stabil

Lagerungspuffer:

PBS mit 0.02% Natriumazid und 50% Glycerin pH 7.3.

Aliquotieren ist nicht notwendig bei -20°C Lagerung

***** 20ul-Größen enthalten 0.1% BSA**

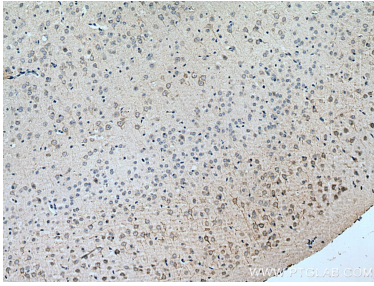
For technical support and original validation data for this product please contact:

T: 1 (888) 4PTGLAB (1-888-478-4522) (toll free
in USA), or 1(312) 455-8498 (outside USA)

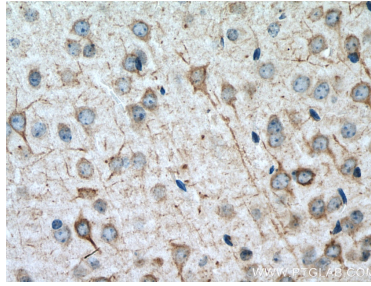
E: proteintech@ptglab.com
W: ptglab.com

**This product is exclusively available under Proteintech
Group brand and is not available to purchase from any
other manufacturer.**

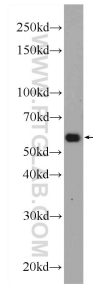
Ausgewählte Validierungsdaten



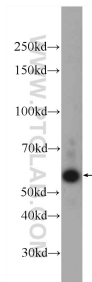
Immunohistochemical analysis of paraffin-embedded mouse brain tissue slide using 24898-1-AP (TMEM161A antibody) at dilution of 1:200 (under 10x lens). Heat mediated antigen retrieval with Tris-EDTA buffer (pH 9.0).



Immunohistochemical analysis of paraffin-embedded mouse brain tissue slide using 24898-1-AP (TMEM161A antibody) at dilution of 1:200 (under 40x lens). Heat mediated antigen retrieval with Tris-EDTA buffer (pH 9.0).



HEK-293 cells were subjected to SDS PAGE followed by western blot with 24898-1-AP (TMEM161A Antibody) at dilution of 1:1000 incubated at room temperature for 1.5 hours.



MCF-7 cells were subjected to SDS PAGE followed by western blot with 24898-1-AP (TMEM161A Antibody) at dilution of 1:1000 incubated at room temperature for 1.5 hours.