

Nur für Forschungszwecke

GRAMD1B Polyklonaler Antikörper

Katalog-Nr.: 24905-1-AP

2 Publikationen



Allgemeine Informationen

Katalog-Nr.: 24905-1-AP	GenBank-Zugangsnummer: BC107480	Reinigungsmethode: Antigen-Affinitätsreinigung
Größe: 150ul, Konzentration: 850 µg/ml von Nanodrop und 400 µg/ml durch die Bradford-Methode mit BSA als Standard;	GeneID (NCBI): 57476	Empfohlene Verdünnungen: WB 1:500-1:2000 IHC 1:50-1:500 IF 1:20-1:200
Wirt: Kaninchen	Vollständiger Name: GRAM domain containing 1B	
Isotyp: IgG	Berechnete Masse: 738 aa, 85 kDa	
Immunogen Katalognummer: AG20670	Beobachtete Masse: 85 kDa	

Anwendungen

Geprüfte Anwendungen: FC, IF, IHC, WB, ELISA	Positivkontrollen: WB : A549-Zellen, IHC : humanes Leberkarzinomgewebe, IF : A549-Zellen,
In Publikationen genannte Anwendungen: IF, WB	
Getestete Reaktivität: Human, Maus	
Zitierte Arten: Human, Maus	
Hinweis-IHC: Antigenmaskierung mit TE-Puffer pH 9,0 empfohlen. (*) Wahlweise kann die Antigenmaskierung auch mit Citratpuffer pH 6,0 erfolgen.	

Hintergrundinformationen

GRAMD1B, also named as KIAA1201, contains a transmembrane region and two domains of known function; the GRAM domain and a VAS domain. It is predicted to localize in the nucleus, supported by several nuclear transport signals and nuclear associated motifs. This highly conserved gene is found in a variety of vertebrates and invertebrates, however, it is not found in bacteria or fungi. There're some isoforms with MW 50 kDa and 81-87 kDa. With phosphor modification, it's about 90-110 kDa in WB detection.

Bemerkenswerte Veröffentlichungen

Verfasser	Pubmed ID	Journal	Anwendung
John-Paul Andersen	32738348	Mol Metab	WB
Sepalika Bandara	37030626	J Lipid Res	WB,IF

Lagerung

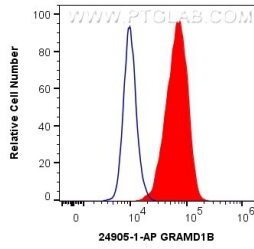
Lagerungsbedingungen:
Bei -20°C lagern. Nach dem Versand ein Jahr lang stabil
Lagerungspuffer:
PBS mit 0.02% Natriumazid und 50% Glycerin pH 7.3.
Aliquotieren ist nicht notwendig bei -20°C Lagerung

*** 20ul-Größen enthalten 0.1% BSA

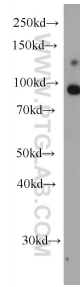
For technical support and original validation data for this product please contact:
T: 1 (888) 4PTGLAB (1-888-478-4522) (toll free in USA), or 1(312) 455-8498 (outside USA)
E: proteintech@ptglab.com
W: ptglab.com

This product is exclusively available under Proteintech Group brand and is not available to purchase from any other manufacturer.

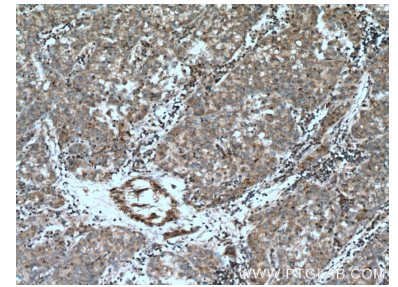
Ausgewählte Validierungsdaten



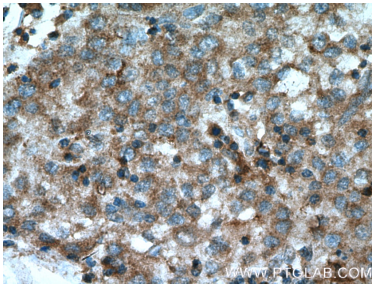
1X10⁶ A549 cells were intracellularly stained with 0.5 ug Anti-Human GRAMD1B (24905-1-AP) and CoraLite®488-Conjugated AffiniPure Goat Anti-Rabbit IgG(H+L) at dilution 1:1000 (red), or 0.5 ug Control Antibody. Cells were fixed with 4% PFA and permeabilized with Flow Cytometry Perm Buffer (PF00011-C).



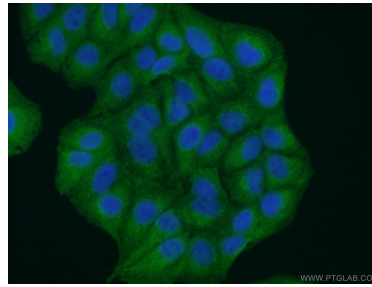
A549 cells were subjected to SDS PAGE followed by western blot with 24905-1-AP (GRAMD1B Antibody) at dilution of 1:1000 incubated at room temperature for 1.5 hours.



Immunohistochemical analysis of paraffin-embedded human liver cancer tissue slide using 24905-1-AP (GRAMD1B Antibody) at dilution of 1:200 (under 10x lens). Heat mediated antigen retrieval with Tris-EDTA buffer (pH 9.0).



Immunohistochemical analysis of paraffin-embedded human liver cancer tissue slide using 24905-1-AP (GRAMD1B Antibody) at dilution of 1:200 (under 40x lens). Heat mediated antigen retrieval with Tris-EDTA buffer (pH 9.0).



Immunofluorescent analysis of (10% Formaldehyde) fixed A549 cells using 24905-1-AP (GRAMD1B antibody) at dilution of 1:50 and Alexa Fluor 488-conjugated AffiniPure Goat Anti-Rabbit IgG(H+L).