

## Allgemeine Informationen

<b>Katalog-Nr.:</b> 24926-1-AP	<b>GenBank-Zugangsnummer:</b> BC001554	<b>Reinigungsmethode:</b> Antigen-Affinitätsreinigung
<b>Größe:</b> 150ul, Konzentration: 500 µg/ml von Nanodrop und 267 µg/ml durch die Bradford-Methode mit BSA als Standard;	<b>GeneID (NCBI):</b> 3611	<b>Empfohlene Verdünnungen:</b> WB 1:500-1:2000 IHC 1:50-1:500 IF 1:20-1:200
<b>Wirt:</b> Kaninchen	<b>Vollständiger Name:</b> integrin-linked kinase	
<b>Isotyp:</b> IgG	<b>Berechnete Masse:</b> 451 aa, 59 kDa	
<b>Immunogen Katalognummer:</b> AG21494	<b>Beobachtete Masse:</b> 51 kDa	

## Anwendungen

<b>Geprüfte Anwendungen:</b> IF, IHC, WB, ELISA	<b>Positivkontrollen:</b> WB : Mausherzgewebe, MCF-7-Zellen IHC : humanes Pankreaskarzinomgewebe, IF : MCF-7-Zellen,
<b>In Publikationen genannte Anwendungen:</b> IHC	
<b>Getestete Reaktivität:</b> Human, Maus	
<b>Zitierte Arten:</b> Maus	

**Hinweis-IHC: Antigenmaskierung mit TE-Puffer pH 9,0 empfohlen. (\*) Wahlweise kann die Antigenmaskierung auch mit Citratpuffer pH 6,0 erfolgen.**

## Hintergrundinformationen

ILK(Integrin-linked protein kinase) is also named as p59, PAT-4, DKFZp686F1765, ILK-1, ILK-2, ILK1, ILK2, p59ILK and belongs to the TKL Ser/Thr protein kinase family. This protein localizes to multiple sites, including the cytoplasm, and imports into the nucleus through sequences in its N-terminus, via active transport mechanisms that involve nuclear pore complexes(PMID: 18635968). ILK performs crucial roles in the control of intestinal cell and crypt-villus axis homeostasis-especially with regard to basement membrane fibronectin deposition-as well as cell proliferation, spreading, and migration(PMID:19885839).

## Bemerkenswerte Veröffentlichungen

Verfasser	Pubmed ID	Journal	Anwendung
Menghong Xu	35289594	ACS Appl Mater Interfaces	IHC

## Lagerung

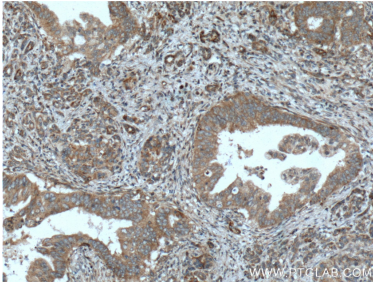
**Lagerungsbedingungen:**  
Bei -20°C lagern. Nach dem Versand ein Jahr lang stabil  
**Lagerungspuffer:**  
PBS mit 0.02% Natriumazid und 50% Glycerin pH 7.3.  
Aliquotieren ist nicht notwendig bei -20°C Lagerung

\*\*\* 20ul-Größen enthalten 0.1% BSA

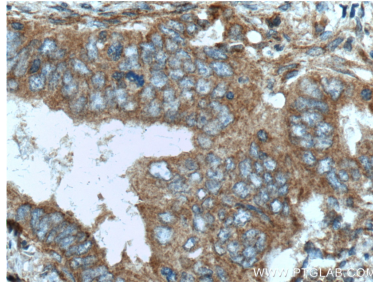
For technical support and original validation data for this product please contact:  
T: 1 (888) 4PTGLAB (1-888-478-4522) (toll free in USA), or 1(312) 455-8498 (outside USA)  
E: proteintech@ptglab.com  
W: ptglab.com

This product is exclusively available under Proteintech Group brand and is not available to purchase from any other manufacturer.

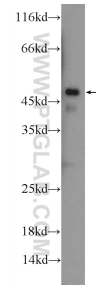
## Ausgewählte Validierungsdaten



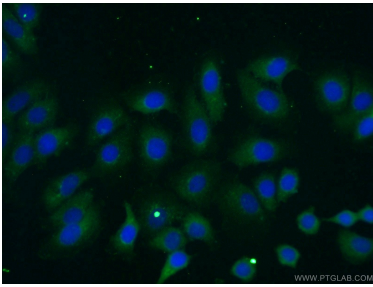
Immunohistochemical analysis of paraffin-embedded human pancreas cancer tissue slide using 24926-1-AP (ILK Antibody) at dilution of 1:200 (under 10x lens). Heat mediated antigen retrieval with Tris-EDTA buffer (pH 9.0).



Immunohistochemical analysis of paraffin-embedded human pancreas cancer tissue slide using 24926-1-AP (ILK Antibody) at dilution of 1:200 (under 40x lens). Heat mediated antigen retrieval with Tris-EDTA buffer (pH 9.0).



mouse heart tissue were subjected to SDS PAGE followed by western blot with 24926-1-AP (ILK Antibody) at dilution of 1:1000 incubated at room temperature for 1.5 hours.



Immunofluorescent analysis of (-20°C Ethanol) fixed MCF-7 cells using 24926-1-AP (ILK antibody) at dilution of 1:50 and Alexa Fluor 488-conjugated AffiniPure Goat Anti-Rabbit IgG(H+L).