

Nur für Forschungszwecke

MAGI2 Polyklonaler Antikörper

Katalog-Nr.: 25189-1-AP



Allgemeine Informationen

Katalog-Nr.: 25189-1-AP	GenBank-Zugangsnummer: BC150277	Reinigungsmethode: Antigen-Affinitätsreinigung
Größe: 150ul, Konzentration: 800 µg/ml von Nanodrop;	GeneID (NCBI): 9863	Empfohlene Verdünnungen: WB 1:5000-1:50000
Wirt: Kaninchen	Vollständiger Name: membrane associated guanylate kinase, WW and PDZ domain containing 2	
Isotyp: IgG	Berechnete Masse: 1455 aa, 159 kDa	
Immunogen Katalognummer: AG18279	Beobachtete Masse: 140 kDa	

Anwendungen

Geprüfte Anwendungen: WB, ELISA	Positivkontrollen: WB: Maushirngewebe, Rattenhirngewebe
Getestete Reaktivität: Human, Maus, Ratte	

Hintergrundinformationen

MAGI proteins are scaffolding proteins, belonging to the Membrane-Associated Guanylate Kinase Inverted proteins of MAGUK family. There are three members of the MAGI subfamily, MAGI-1, MAGI-2 and MAGI-3. They are comprised of 6 PDZ domains, 2 WW domains, and 1 GUK domain. They have been proved to mediate the transport and signal transduction of various G protein coupled receptors (GPCRs) (PMID: 29625175). The antibody is specific to MAGI2.

Lagerung

Lagerungsbedingungen:
Bei -20°C lagern. Nach dem Versand ein Jahr lang stabil

Lagerungspuffer:
PBS mit 0.02% Natriumazid und 50% Glycerin pH 7.3.

Aliquotieren ist nicht notwendig bei -20°C Lagerung

***** 20ul-Größen enthalten 0.1% BSA**

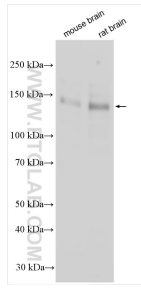
For technical support and original validation data for this product please contact:

T: 1 (888) 4PTGLAB (1-888-478-4522) (toll free
in USA), or 1(312) 455-8498 (outside USA)

E: proteintech@ptglab.com
W: ptglab.com

This product is exclusively available under Proteintech Group brand and is not available to purchase from any other manufacturer.

Ausgewählte Validierungsdaten



Various lysates were subjected to SDS PAGE followed by western blot with 25189-1-AP (MAGI2 antibody) at dilution of 1:10000 incubated at room temperature for 1.5 hours.