

Nur für Forschungszwecke

Nesprin 2 Polyklonaler Antikörper

Katalog-Nr.: 25265-1-AP



Allgemeine Informationen

Katalog-Nr.:
25265-1-AP

Größe:

150ul, Konzentration: 650 µg/ml von
Nanodrop und 340 µg/ml durch die
Bradford-Methode mit BSA als
Standard;

Wirt:

Kaninchen

Isotyp:

IgG

GenBank-Zugangsnummer:

NM_015180

GeneID (NCBI):

23224

Vollständiger Name:

spectrin repeat containing, nuclear
envelope 2

Berechnete Masse:

799 kDa

Beobachtete Masse:

50-60 kDa

Reinigungsmethode:

Antigen-Affinitätsreinigung

Empfohlene Verdünnungen:

WB 1:500-1:1000

Anwendungen

Geprüfte Anwendungen:

IF, WB, ELISA

Getestete Reaktivität:

Human

Positivkontrollen:

WB: HEK-293-Zellen,

Hintergrundinformationen

Nesprin-2 is a member of actin-binding proteins that localize to the outer nuclear membrane. As a nuclear envelope component it provides a link between cytoskeletal components of the cytoplasm and the nucleoplasm. Nesprin genes generate, through alternative splicing and alternative promoter and/or terminator usage, a multitude of differentially expressed isoforms, differing in domain architecture and length. The largest protein isoform, known as NUANCE or GIANT, has a predicted MW around 796 kDa. Other isoforms range from 30 kDa to 119 kDa.

Lagerung

Lagerungsbedingungen:

Bei -20°C lagern. Nach dem Versand ein Jahr lang stabil

Lagerungspuffer:

PBS mit 0.02% Natriumazid und 50% Glycerin pH 7.3.

Aliquotieren ist nicht notwendig bei -20°C Lagerung

*** 20ul-Größen enthalten 0.1% BSA

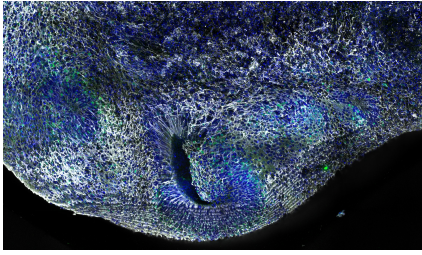
For technical support and original validation data for this product please contact:

T: 1 (888) 4PTGLAB (1-888-478-4522) (toll free
in USA), or 1(312) 455-8498 (outside USA)

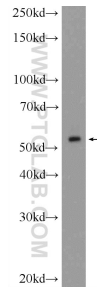
E: proteintech@ptglab.com
W: ptglab.com

This product is exclusively available under Proteintech Group brand and is not available to purchase from any other manufacturer.

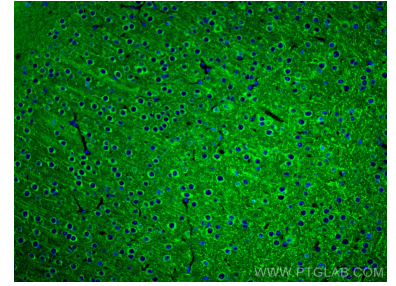
Ausgewählte Validierungsdaten



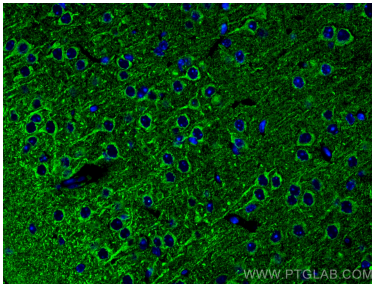
Human dorsal cerebral organoid at 12 weeks. 4% PFA fixed. Antibody dilution was 1:500 for Syne-2 (25265-1-AP; white), DAPI 1:1000. Image created by Wimmer Ryszard from the Institut Curie in Paris, France



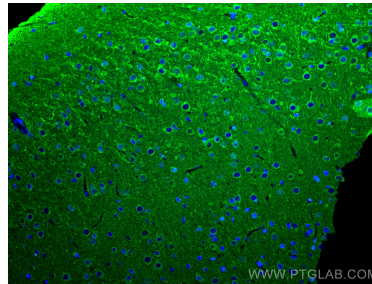
HEK-293 cells were subjected to SDS PAGE followed by western blot with 25265-1-AP (SYNE2 Antibody) at dilution of 1:600 incubated at room temperature for 1.5 hours.



Immunofluorescent analysis of (4% PFA) fixed mouse brain tissue using Nesprin 2 antibody (25265-1-AP) at dilution of 1:200 and CoraLite®488-Conjugated AffiniPure Goat Anti-Rabbit IgG(H+L).



Immunofluorescent analysis of (4% PFA) fixed mouse brain tissue using Nesprin 2 antibody (25265-1-AP) at dilution of 1:200 and CoraLite®488-Conjugated AffiniPure Goat Anti-Rabbit IgG(H+L).



Immunofluorescent analysis of (4% PFA) fixed rat brain tissue using Nesprin 2 antibody (25265-1-AP) at dilution of 1:200 and CoraLite®488-Conjugated AffiniPure Goat Anti-Rabbit IgG(H+L).