

Nur für Forschungszwecke

# FAM160B1 Polyklonaler Antikörper

Katalog-Nr.:25388-1-AP



## Allgemeine Informationen

Katalog-Nr.:  
25388-1-AP

Größe:  
150ul , Konzentration: 600 µg/ml von  
Nanodrop und 420 µg/ml durch die  
Bradford-Methode mit BSA als  
Standard;

Wirt:  
Kaninchen

Isotyp:  
IgG

Immunogen Katalognummer:  
AG22051

GenBank-Zugangsnummer:  
BC037207

GeneID (NCBI):  
57700

Vollständiger Name:  
family with sequence similarity 160,  
member B1

Berechnete Masse:  
765 aa, 86 kDa

Beobachtete Masse:  
105 kDa

Reinigungsmethode:

Antigen-Affinitätsreinigung

Empfohlene Verdünnungen:

WB 1:500-1:1000  
IP 0.5-4.0 ug für IP und 1:200-1:1000  
für WB  
IF 1:20-1:200

## Anwendungen

Geprüfte Anwendungen:

IF, IP, WB,ELISA

Getestete Reaktivität:

Human

Positivkontrollen:

WB : PC-3-Zellen,

IP : PC-3-Zellen,

IF : PC-3-Zellen,

## Hintergrundinformationen

FAM160B1, also named as KIAA1600, is a 765 amino acid protein, which belongs to the UPF0518 family. The biological function of FAM160B1 is still non-known. FAM160B1 exists as two isoforms and the molecular weight of isoform one is a 86 kDa protein. The isoform two is produced by alternative splicing and is a 83 kDa protein. There are modified residues of FAM160B1 protein, so we detected 95 kDa and 100 kDa two bands by western blotting.

## Lagerung

Lagerungsbedingungen:

Bei -20°C lagern. Nach dem Versand ein Jahr lang stabil

Lagerungspuffer:

PBS mit 0.02% Natriumazid und 50% Glycerin pH 7.3.

Aliquotieren ist nicht notwendig bei -20°C Lagerung

\*\*\* 20ul-Größen enthalten 0.1% BSA

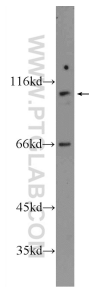
For technical support and original validation data for this product please contact:

T: 1 (888) 4PTGLAB (1-888-478-4522) (toll free  
in USA), or 1(312) 455-8498 (outside USA)

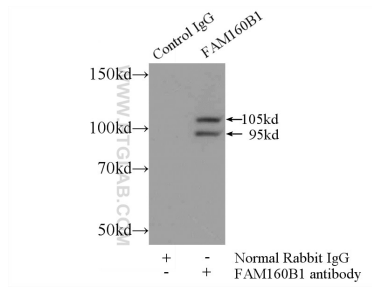
E: proteintech@ptglab.com  
W: ptglab.com

This product is exclusively available under Proteintech Group brand and is not available to purchase from any other manufacturer.

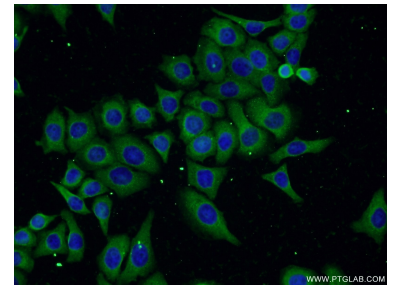
## Ausgewählte Validierungsdaten



PC-3 cells were subjected to SDS PAGE followed by western blot with 25388-1-AP (FAM160B1 Antibody) at dilution of 1:600 incubated at room temperature for 1.5 hours.



IP Result of anti-FAM160B1 (IP:25388-1-AP, 5ug; Detection:25388-1-AP 1:300) with PC-3 cells lysate 1500ug.



Immunofluorescent analysis of PC-3 cells using 25388-1-AP (FAM160B1 antibody) at dilution of 1:50 and Alexa Fluor 488-conjugated AffiniPure Goat Anti-Rabbit IgG(H+L).