

Nur für Forschungszwecke

SLC25A22 Polyklonaler Antikörper

Katalog-Nr.: 25402-1-AP

1 Publikationen



Allgemeine Informationen

Katalog-Nr.: 25402-1-AP	GenBank-Zugangsnummer: BC023545	Reinigungsmethode: Antigen-Affinitätsreinigung
Größe: 150ul, Konzentration: 1000 µg/ml von 79751 Nanodrop und 460 µg/ml durch die Bradford-Methode mit BSA als Standard;	GeneID (NCBI): Vollständiger Name: solute carrier family 25 (mitochondrial carrier: glutamate), member 22	Empfohlene Verdünnungen: WB 1:1000-1:6000 IHC 1:50-1:500 IF 1:50-1:500
Wirt: Kaninchen	Berechnete Masse: 323 aa, 34 kDa	
Isotyp: IgG	Beobachtete Masse: 30-34 kDa	
Immunogen Katalognummer: AG19958		

Anwendungen

Geprüfte Anwendungen: IF, IHC, WB, ELISA	Positivkontrollen: WB : Maushirngewebe, Caco-2-Zellen, HT-29-Zellen, NCI-H1299-Zellen, Rattenhirngewebe
In Publikationen genannte Anwendungen: WB	IHC : Maushirngewebe, humanes Kolonkarzinomgewebe, humanes Leberkarzinomgewebe
Getestete Reaktivität: Human, Maus, Ratte	IF : COS-7-Zellen, Maushirngewebe
Zitierte Arten: Maus	

Hinweis-IHC: Antigenmaskierung mit TE-Puffer pH 9,0 empfohlen. (*) Wahlweise kann die Antigenmaskierung auch mit Citratpuffer pH 6,0 erfolgen.

Hintergrundinformationen

SLC25A22 encodes a mitochondrial glutamate/H⁺ symporter with highly expression in brain, especially in astrocytes, where it controls glutamate uptake. The mutations of SLC25A22 are associated with the early/infantile epileptic encephalopathies. It has been shown that SLC25A22 plays a key role in promoting proliferation and migration in cancer, such as human colorectal cancer (CRC) and Gallbladder cancer (GBC). And there is a result that the expression of SLC25A22 in GBC was significantly higher than that in adjacent tissues. 25402-1-AP antibody is specific to SLC25A22. (PMID: 30814911, 25033742, 24596948)

Bemerkenswerte Veröffentlichungen

Verfasser	Pubmed ID	Journal	Anwendung
Maria F Noterman	33836587	Proc Natl Acad Sci U S A	WB

Lagerung

Lagerungsbedingungen:
Bei -20°C lagern. Nach dem Versand ein Jahr lang stabil

Lagerungspuffer:
PBS mit 0.02% Natriumazid und 50% Glycerin pH 7.3.

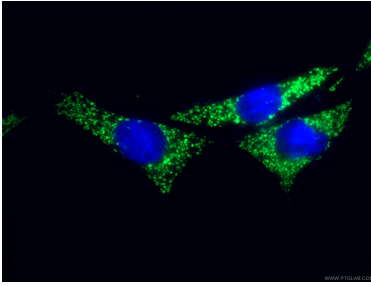
Aliquotieren ist nicht notwendig bei -20°C Lagerung

*** 20ul-Größen enthalten 0.1% BSA

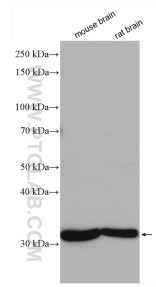
For technical support and original validation data for this product please contact:
T: 1 (888) 4PTGLAB (1-888-478-4522) (toll free in USA), or 1(312) 455-8498 (outside USA)
E: proteintech@ptglab.com
W: ptglab.com

This product is exclusively available under Proteintech Group brand and is not available to purchase from any other manufacturer.

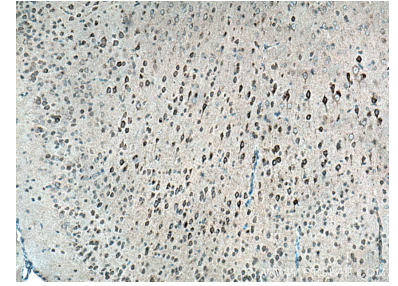
Ausgewählte Validierungsdaten



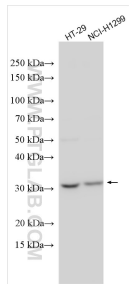
Immunofluorescent analysis of (4% PFA) fixed COS-7 cells using 25402-1-AP (SLC25A22 antibody), at dilution of 1:200 and CoraLite®488-Conjugated AffiniPure Goat Anti-Rabbit IgG(H+L).



Various lysates were subjected to SDS PAGE followed by western blot with 25402-1-AP (SLC25A22 antibody) at dilution of 1:3000 incubated at room temperature for 1.5 hours.



Immunohistochemical analysis of paraffin-embedded mouse brain tissue slide using 25402-1-AP (SLC25A22 antibody) at dilution of 1:200 (under 10x lens). Heat mediated antigen retrieval with Tris-EDTA buffer (pH 9.0).



Various lysates were subjected to SDS PAGE followed by western blot with 25402-1-AP (SLC25A22 antibody) at dilution of 1:5000 incubated at room temperature for 1.5 hours.