

Nur für Forschungszwecke

TWIST1-specific Polyklonaler Antikörper



Katalog-Nr.: 25465-1-AP

Vorgestelltes Produkt

139 Publikationen

Allgemeine Informationen

Katalog-Nr.: 25465-1-AP	GenBank-Zugangsnummer: BC036704	Reinigungsmethode: Antigen-Affinitätsreinigung
Größe: 150ul, Konzentration: 600 µg/ml von Nanodrop;	GeneID (NCBI): 7291	Empfohlene Verdünnungen: WB 1:1000-1:4000
Wirt: Kaninchen	Vollständiger Name: twist homolog 1 (Drosophila)	IP 0.5-4.0 µg für IP und 1:500-1:1000 für WB
Isotyp: IgG	Berechnete Masse: 202 aa, 21 kDa	IHC 1:50-1:500
Immunogen Katalognummer: AG21924	Beobachtete Masse: 25-30 kDa	IF 1:50-1:500

Anwendungen

Geprüfte Anwendungen:

IF, IHC, IP, WB, ELISA

In Publikationen genannte Anwendungen:

ChIP, CoIP, IF, IHC, IP, WB

Getestete Reaktivität:

Human

Zitierte Arten:

Human, Maus, Ratte, Zebrafisch

Hinweis-IHC: Antigendemaskierung mit TE-Puffer pH 9,0 empfohlen. (*) Wahlweise kann die Antigendemaskierung auch mit Citratpuffer pH 6,0 erfolgen.

Positivkontrollen:

WB: U-251-Zellen, A549-Zellen, Maushirngewebe, MDA-MB-231-Zellen, PC-3-Zellen, Raji-Zellen, SH-SY5Y-Zellen

IP: MDA-MB-453s-Zellen,

IHC: humanes Leberkarzinomgewebe, humanes Mammakarzinomgewebe, humanes Pankreaskarzinomgewebe

IF: HepG2-Zellen,

Hintergrundinformationen

Twist-related protein 1 (TWIST1), also named as BHLHA38, is 202 amino acid protein, which contains one bHLH domain. TWIST1 localizes in the nucleus and acts as a transcriptional regulator. TWIST1 inhibits monogenesis by sequestering E proteins and inhibits trans-activation by MEF2. TWIST1 is expressed in subset of mesodermal cells. The antibody reacts specifically with Twist1 protein. The calculated molecular weight of TWIST1 is 21 kDa, but the observed molecular weight is about 30 kDa due to the post-translational modification (PMID: 30733340).

Bemerkenswerte Veröffentlichungen

Verfasser	Pubmed ID	Journal	Anwendung
XIAOYUE FENG	34528694	Oncol Rep	WB
Yi-Fan Tan	36127329	Cell Death Discov	ChIP, WB
FANG YANG	34733365	Oncol Lett	WB

Lagerung

Lagerungsbedingungen:

Bei -20°C lagern. Nach dem Versand ein Jahr lang stabil

Lagerungspuffer:

PBS mit 0.02% Natriumazid und 50% Glycerin pH 7.3.

Aliquotieren ist nicht notwendig bei -20°C Lagerung

*** 20ul-Größen enthalten 0.1% BSA

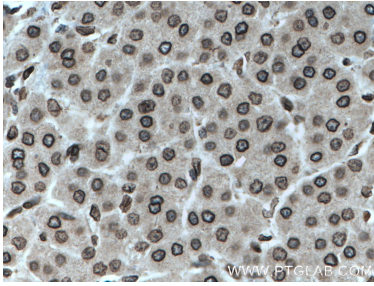
For technical support and original validation data for this product please contact:

T: 1 (888) 4PTGLAB (1-888-478-4522) (toll free in USA), or 1(312) 455-8498 (outside USA)

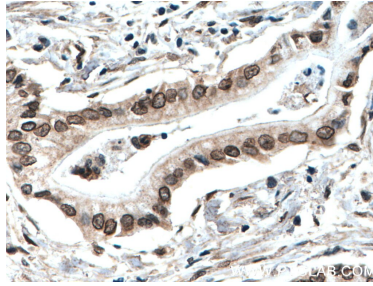
E: proteintech@ptglab.com
W: ptglab.com

This product is exclusively available under Proteintech Group brand and is not available to purchase from any other manufacturer.

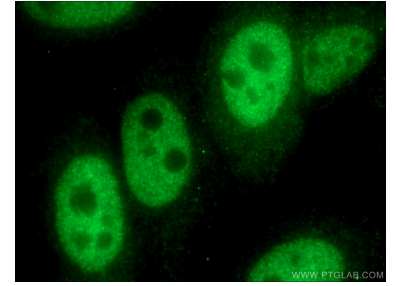
Ausgewählte Validierungsdaten



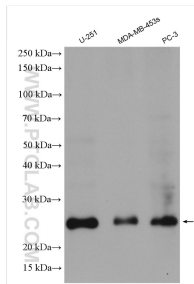
Immunohistochemical analysis of paraffin-embedded human liver cancer tissue slide using 25465-1-AP (TWIST1-specific antibody) at dilution of 1:200 (under 40x lens. Heat mediated antigen retrieval with Tris-EDTA buffer (pH 9.0).



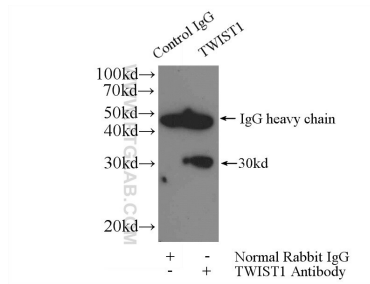
Immunohistochemical analysis of paraffin-embedded human pancreas cancer tissue slide using 25465-1-AP (TWIST1-specific antibody) at dilution of 1:200 (under 40x lens. Heat mediated antigen retrieval with Tris-EDTA buffer (pH 9.0).



Immunofluorescent analysis of (4% PFA) fixed HepG2 cells using 25465-1-AP (TWIST1-specific antibody) at dilution of 1:50 and Alexa Fluor 488-Conjugated AffiniPure Goat Anti-Rabbit IgG(H+L).



Various lysates were subjected to SDS PAGE followed by western blot with 25465-1-AP (TWIST1-specific antibody) at dilution of 1:2000 incubated at room temperature for 1.5 hours.



IP Result of anti-TWIST1-specific (IP:25465-1-AP, 4ug; Detection:25465-1-AP 1:500) with MDA-MB-453s cells lysate 920ug.



SH-SY5Y cells were subjected to SDS PAGE followed by western blot with 25465-1-AP (TWIST1-specific antibody) at dilution of 1:3000 incubated at room temperature for 1.5 hours.