

Nur für Forschungszwecke

CTGF Polyklonaler Antikörper

Katalog-Nr.: 25474-1-AP

12 Publikationen



Allgemeine Informationen

Katalog-Nr.: 25474-1-AP	GenBank-Zugangsnummer: NM_001901	Reinigungsmethode: Antigen-Affinitätsreinigung
Größe: 150ul, Konzentration: 700 µg/ml von Nanodrop;	GeneID (NCBI): 1490	Empfohlene Verdünnungen: WB 1:1000-1:4000
Wirt: Kaninchen	Vollständiger Name: connective tissue growth factor	
Isotyp: IgG	Berechnete Masse: 38 kDa	
	Beobachtete Masse: 35 kDa	

Anwendungen

Geprüfte Anwendungen: WB, ELISA	Positivkontrollen: WB: HUVEC-Zellen, HeLa-Zellen, U2OS-Zellen
In Publikationen genannte Anwendungen: IF, IHC, WB	
Getestete Reaktivität: Human	
Zitierte Arten: Human, Hund, Maus, Ratte, Ziege	

Hintergrundinformationen

CTGF, also known as CCN2, is a member of the CCN family of matricellular proteins. CTGF, a cysteine-rich, matrix-associated, heparin-binding protein, is widely expressed in various human tissues and organs. CTGF has important roles in many biological processes, including cell adhesion, migration, proliferation, angiogenesis, skeletal development, and tissue wound repair, and is critically involved in fibrotic disease and several forms of cancers.

Bemerkenswerte Veröffentlichungen

Verfasser	Pubmed ID	Journal	Anwendung
Tsung-Teng Huang	36267283	Front Pharmacol	WB, IHC
Chenyang Qi	36375573	Life Sci	WB
Youcheng Wang	36483596	Int J Med Sci	WB

Lagerung

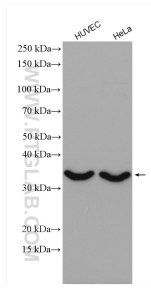
Lagerungsbedingungen:
Bei -20°C lagern. Nach dem Versand ein Jahr lang stabil
Lagerungspuffer:
PBS mit 0.02% Natriumazid und 50% Glycerin pH 7.3.
Aliquotieren ist nicht notwendig bei -20°C Lagerung

*** 20ul-Größen enthalten 0.1% BSA

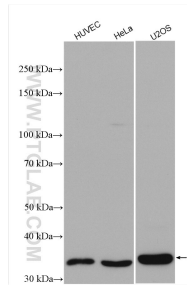
For technical support and original validation data for this product please contact:
T: 1 (888) 4PTGLAB (1-888-478-4522) (toll free in USA), or 1(312) 455-8498 (outside USA)
E: proteintech@ptglab.com
W: ptglab.com

This product is exclusively available under Proteintech Group brand and is not available to purchase from any other manufacturer.

Ausgewählte Validierungsdaten



Various lysates were subjected to SDS PAGE followed by western blot with 25474-1-AP (CTGF antibody) at dilution of 1:2000 incubated at room temperature for 1.5 hours.



Various lysates were subjected to SDS PAGE followed by western blot with 25474-1-AP (CTGF antibody) at dilution of 1:4000 incubated at room temperature for 1.5 hours.