

Allgemeine Informationen

Katalog-Nr.: 25518-1-AP	GenBank-Zugangsnummer: NM_000290	Reinigungsmethode: Antigen-Affinitätsreinigung
Größe: 150ul, Konzentration: 500 µg/ml von Nanodrop und 300 µg/ml durch die Bradford-Methode mit BSA als Standard;	GeneID (NCBI): 5224	Empfohlene Verdünnungen: WB 1:500-1:1000
Wirt: Kaninchen	Vollständiger Name: phosphoglycerate mutase 2 (muscle)	
Isotyp: IgG	Berechnete Masse: 28 kDa	
	Beobachtete Masse: 29 kDa	

Anwendungen

Geprüfte Anwendungen: WB, ELISA	Positivkontrollen: WB: Maushodengewebe,
Getestete Reaktivität: Human, Maus	

Hintergrundinformationen

Phosphoglycerate mutase (PGAM), an important enzyme in the glycolytic pathway, catalyzes the transfer of a phosphate group between the 2 and the 3 positions of glyceric acid. The muscle-specific isoform (type M, PGAM2) of phosphoglycerate mutase (PGAM) is a housekeeping enzyme and it catalyzes the conversion of 3-phosphoglycerate into 2-phosphoglycerate in the glycolysis process to release energy. It is encoded by the Pgam2 gene. In addition, it is demonstrated that PGAM2 locates both in cytoplasm and nuclei, and takes part in the glycometabolism process of cytoplasm and nuclei (PMID: 18499067). Defects in PGAM2 are the cause of glycogen storage disease type 10 (GSD10). This antibody is specific for PGAM2.

Lagerung

Lagerungsbedingungen:
Bei -20°C lagern. Nach dem Versand ein Jahr lang stabil
Lagerungspuffer:
PBS mit 0.02% Natriumazid und 50% Glycerin pH 7.3.
Aliquotieren ist nicht notwendig bei -20°C Lagerung

*** 20ul-Größen enthalten 0.1% BSA

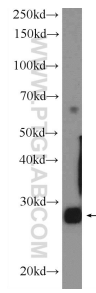
For technical support and original validation data for this product please contact:

T: 1 (888) 4PTGLAB (1-888-478-4522) (toll free
in USA), or 1(312) 455-8498 (outside USA)

E: proteintech@ptglab.com
W: ptglab.com

This product is exclusively available under Proteintech Group brand and is not available to purchase from any other manufacturer.

Ausgewählte Validierungsdaten



mouse testis tissue were subjected to SDS PAGE followed by western blot with 25518-1-AP (PGAM2 Antibody) at dilution of 1:600 incubated at room temperature for 1.5 hours.