

Nur für Forschungszwecke

MCP1 Polyklonaler Antikörper

Katalog-Nr.:25542-1-AP

50 Publikationen



Allgemeine Informationen

Katalog-Nr.: 25542-1-AP	GenBank-Zugangsnummer: BC009716	Reinigungsmethode: Antigen-Affinitätsreinigung
Größe: 150ul , Konzentration: 600 µg/ml von Nanodrop;	GeneID (NCBI): 6347	Empfohlene Verdünnungen: WB 1:1000-1:4000 IHC 1:50-1:500
Wirt: Kaninchen	Vollständiger Name: chemokine (C-C motif) ligand 2	
Isotyp: IgG	Berechnete Masse: 99 aa, 11 kDa	
Immunogen Katalognummer: AG10601	Beobachtete Masse: 11 kDa	

Anwendungen

Geprüfte Anwendungen:
FC, IHC, WB, ELISA

In Publikationen genannte Anwendungen:
Blocking, IF, IHC

Getestete Reaktivität:
Human

Zitierte Arten:
Human, Kaninchen

Hinweis-IHC: Antigenmaskierung mit TE-Puffer pH 9,0 empfohlen. (*) Wahlweise kann die Antigenmaskierung auch mit Citratpuffer pH 6,0 erfolgen.

Positivkontrollen:

WB : PMA, LPS and Brefeldin A treated THP-1 cells,

IHC : humanes Mammakarzinomgewebe, humanes Leberkarzinomgewebe, humanes Pankreaskarzinomgewebe

Hintergrundinformationen

Monocyte chemoattractant protein 1 (MCP1; also known as CCL2), is a chemokine that can be expressed in monocytes, macrophages, and endothelial cells, and belongs to the CC subfamily of chemokines. Chemokines are a superfamily of secreted proteins involved in immunoregulatory and inflammatory processes. Research has shown that the expression of MCP1 increases in the serum of patients with acute myocarditis. MCP1 is up-regulated in many types of CNS injury, including ischemia, hemorrhage, trauma, infection, hypoxia, and peripheral nerve axotomy. MCP1 has also been implicated in the pathogenesis of diseases characterized by monocytic infiltrates, such as psoriasis, rheumatoid arthritis, and atherosclerosis.

Bemerkenswerte Veröffentlichungen

Verfasser	Pubmed ID	Journal	Anwendung
Yun Zhu	31660067	Theranostics	IHC
Xiaojuan Ma	32900249	J Recept Signal Transduct Res	WB
Jiajun Chen	36367498	Life Sci	IHC,IF

Lagerung

Lagerungsbedingungen:

Bei -20°C lagern. Nach dem Versand ein Jahr lang stabil

Lagerungspuffer:

PBS mit 0.02% Natriumazid und 50% Glycerin pH 7.3.

Aliquotieren ist nicht notwendig bei -20°C Lagerung

***** 20ul-Größen enthalten 0.1% BSA**

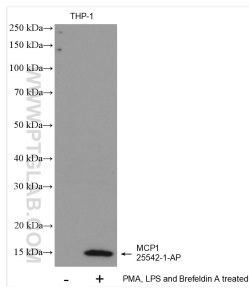
For technical support and original validation data for this product please contact:

T: 1 (888) 4PTGLAB (1-888-478-4522) (toll free in USA), or 1(312) 455-8498 (outside USA)

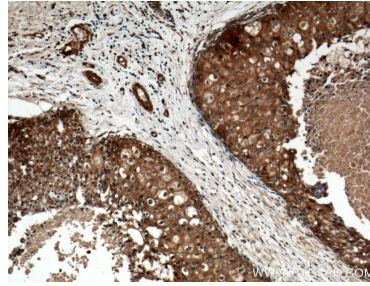
E: proteintech@ptglab.com
W: ptglab.com

This product is exclusively available under Proteintech Group brand and is not available to purchase from any other manufacturer.

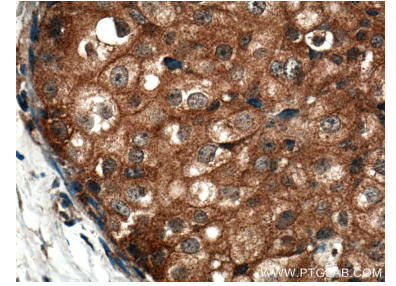
Ausgewählte Validierungsdaten



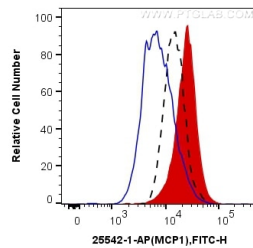
Untreated THP-1 cells, THP-1 cells (treated with 50 nM PMA and 5 ug/ml LPS for 24 hours, with addition of 300ng/ml Brefeldin A for the last 3 hours.) were subjected to SDS PAGE followed by western blot with 25542-1-AP (MCP1 antibody) at dilution of 1:2000 incubated at room temperature for 1.5 hours.



Immunohistochemical analysis of paraffin-embedded human breast cancer tissue slide using 25542-1-AP (MCP1 antibody) at dilution of 1:200 (under 10x lens).



Immunohistochemical analysis of paraffin-embedded human breast cancer tissue slide using 25542-1-AP (MCP1 antibody) at dilution of 1:200 (under 40x lens).



1X10⁶ HP-1 cells untreated (dashed lines) or treated with PMA (red) were intracellularly stained with 0.4 ug Anti-Human MCP1 (25542-1-AP) and CoraLite®488-Conjugated AffiniPure Goat Anti-Rabbit IgG(H+L) at dilution 1:1000 (red), or 0.4 ug Control Antibody (Blue). Cells were fixed with 4% PFA and permeabilized with Flow Cytometry Perm Buffer (PF00011-C).