

Nur für Forschungszwecke

# SCML2 Polyklonaler Antikörper

Katalog-Nr.: 25544-1-AP

Vorgestelltes Produkt



## Allgemeine Informationen

Katalog-Nr.:  
25544-1-AP

Größe:  
150ul, Konzentration: 1000 µg/ml von 10389  
Nanodrop und 480 µg/ml durch die  
Bradford-Methode mit BSA als  
Standard;

Wirt:  
Kaninchen

Isotyp:  
IgG

Immunogen Katalognummer:  
AG22271

GenBank-Zugangsnummer:  
BC064617

GeneID (NCBI):

Vollständiger Name:  
sex comb on midleg-like 2  
(Drosophila)

Berechnete Masse:  
700 aa, 77 kDa

Beobachtete Masse:  
70 kDa, 80 kDa

Reinigungsmethode:

Antigen-Affinitätsreinigung

Empfohlene Verdünnungen:

WB 1:500-1:1000  
IP 0.5-4.0 µg für IP und 1:200-1:1000  
für WB  
IF 1:20-1:200

## Anwendungen

Geprüfte Anwendungen:

IF, IP, WB, ELISA

Getestete Reaktivität:

Human, Maus

Positivkontrollen:

WB: HEK-293-Zellen, K-562-Zellen, Maushodengewebe

IP: HEK-293-Zellen,

IF: HEK-293-Zellen,

## Hintergrundinformationen

The human SCML2 gene, a mammalian homologue of the Drosophila PcG protein SCM, encodes two protein isoforms: SCML2A that is bound to chromatin and SCML2B that is predominantly nucleoplasmic (PMID: 24358021). Polycomb repressive complex-1 (PRC1) is essential for the epigenetic regulation of gene expression. SCML2 is a Polycomb-group protein that associates with PRC1. SCML2 participates in the epigenetic control of transcription directly and in cooperation with PRC1 (PMID: 24986859).

## Lagerung

Lagerungsbedingungen:

Bei -20°C lagern. Nach dem Versand ein Jahr lang stabil

Lagerungspuffer:

PBS mit 0.02% Natriumazid und 50% Glycerin pH 7.3.

Aliquotieren ist nicht notwendig bei -20°C Lagerung

\*\*\* 20ul-Größen enthalten 0.1% BSA

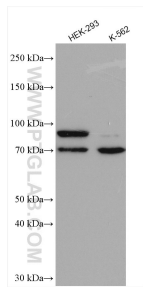
For technical support and original validation data for this product please contact:

T: 1 (888) 4PTGLAB (1-888-478-4522) (toll free  
in USA), or 1(312) 455-8498 (outside USA)

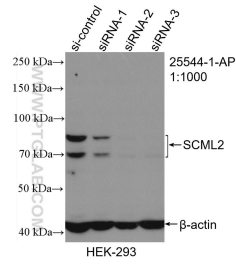
E: proteintech@ptglab.com  
W: ptglab.com

This product is exclusively available under Proteintech Group brand and is not available to purchase from any other manufacturer.

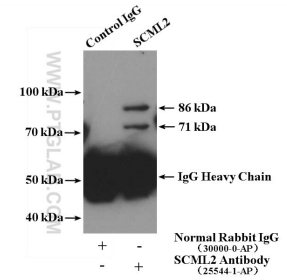
## Ausgewählte Validierungsdaten



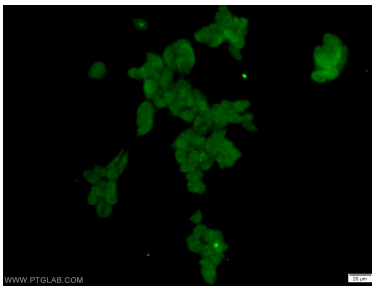
Various lysates were subjected to SDS PAGE followed by western blot with 25544-1-AP (SCML2 antibody) at dilution of 1:800 incubated at room temperature for 1.5 hours.



WB result of SCML2 antibody (25544-1-AP; 1:1000; incubated at room temperature for 1.5 hours) with sh-Control and sh-SCML2 transfected HEK-293 cells.



IP Result of anti-SCML2 (IP:25544-1-AP, 4ug; Detection:25544-1-AP 1:300) with HEK-293 cells lysate 2400ug.



Immunofluorescent analysis of HEK-293 cells using 25544-1-AP (SCML2 antibody) at dilution of 1:50 and Alexa Fluor 488-conjugated AffiniPure Goat Anti-Rabbit IgG(H+L).